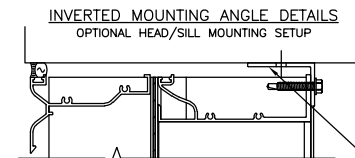
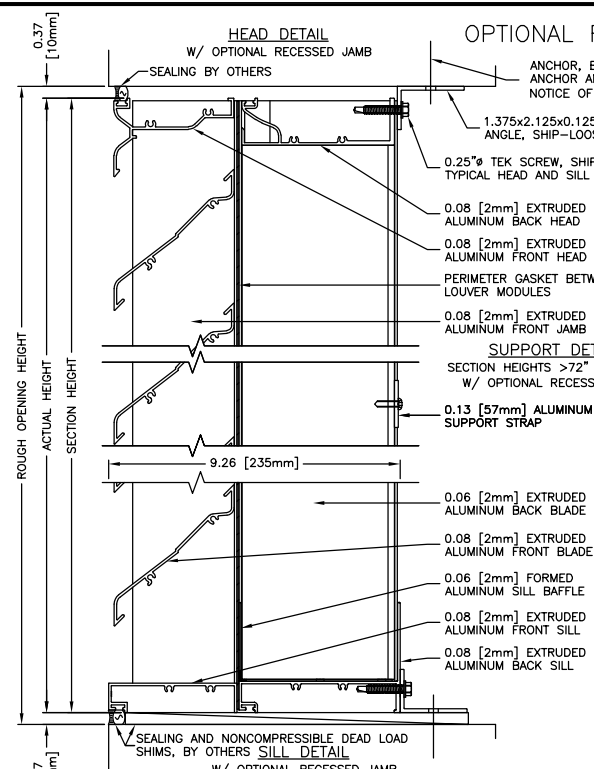
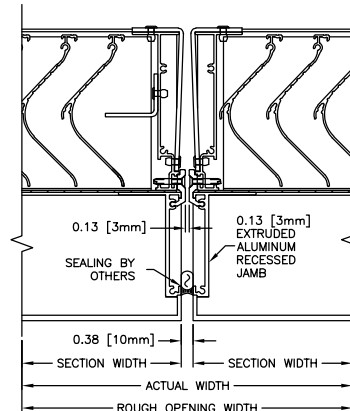
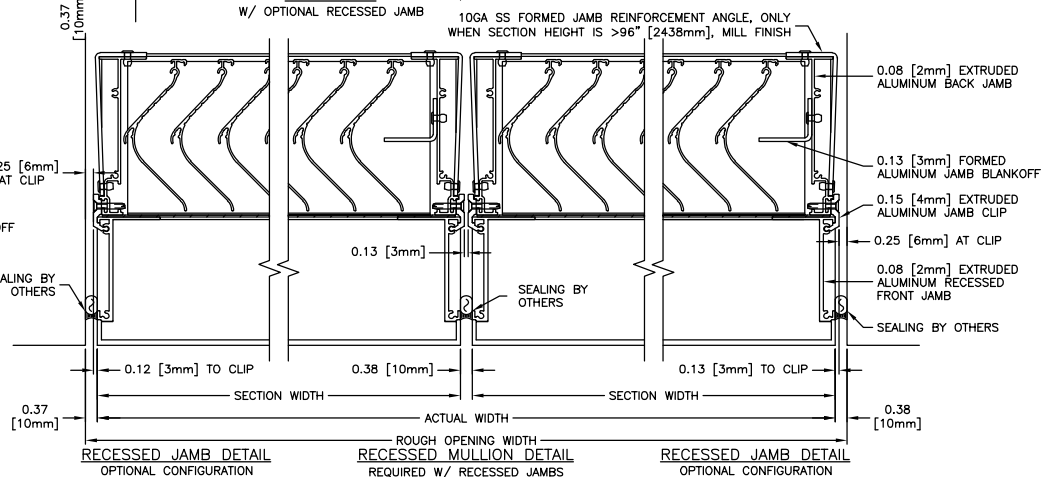
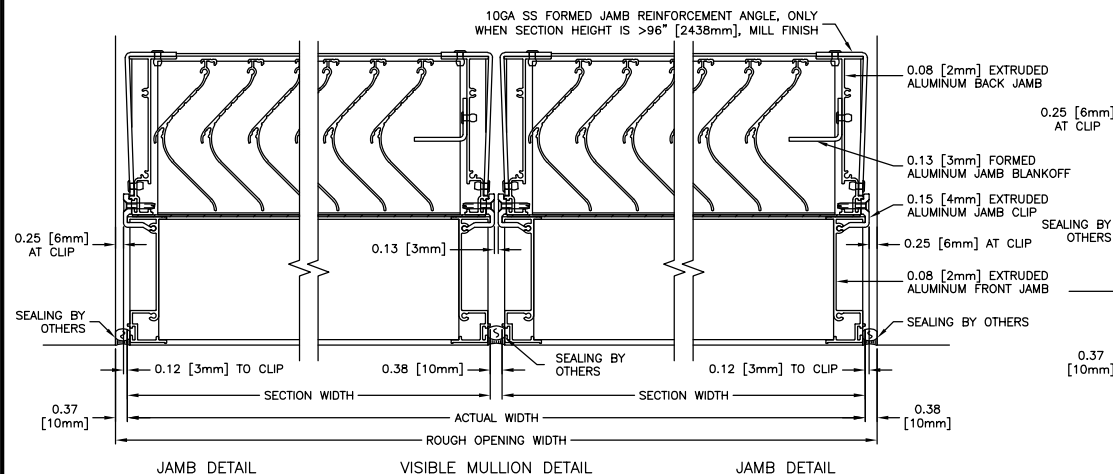


AN INVERTED CONTINUOUS MOUNTING ANGLE ALLOWS FOR A GREATER SUBSTRATE ANCHOR EDGE DISTANCE (SEE MIAMI-DADE NOTICE OF ACCEPTANCE (NOA) FOR ADDITIONAL DETAILS. ADDITIONAL PERIMETER GAP MAY BE NEEDED FOR ANCHOR HEAD CLEARANCE (UP TO 0.5" [13mm] PER SIDE ALLOWED)



AN INVERTED CONTINUOUS MOUNTING ANGLE ALLOWS FOR A GREATER SUBSTRATE ANCHOR EDGE DISTANCE (SEE MIAMI-DADE NOTICE OF ACCEPTANCE (NOA) FOR ADDITIONAL DETAILS. ADDITIONAL PERIMETER GAP MAY BE NEEDED FOR ANCHOR HEAD CLEARANCE (UP TO 0.5" [13mm] PER SIDE ALLOWED)



**AIROLITE**  
The look that works.™

MODEL: SCC901MD

SHEET: 1 OF 1