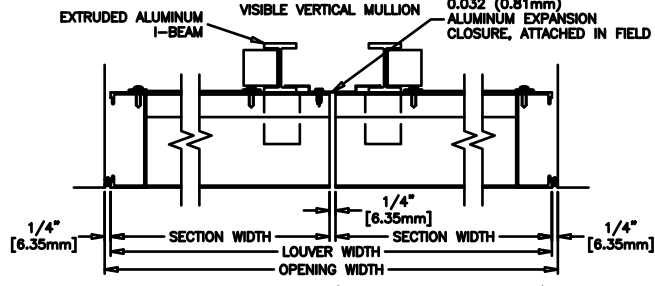
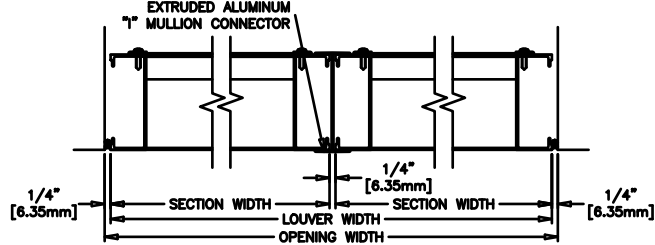
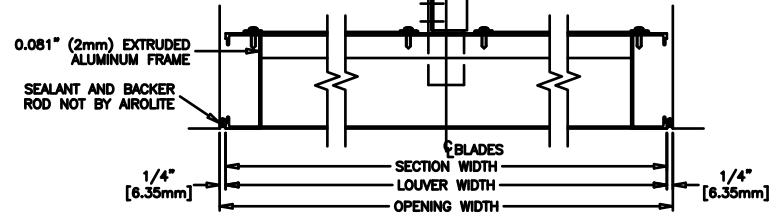
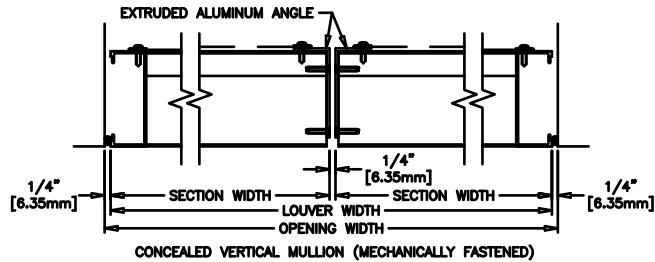


EXTRUDED ALUMINUM ANGLE STIFFENER AND BLADE BRACES
 LOCATED AT CENTER LINE OF SECTIONS OVER 72" WIDE

CLIP ANGLES AT HEAD AND SILL
 OF VERTICAL STIFFENER SHIPPED
 LOOSE FOR INSTALLATION IN FIELD



CONCEALED VERTICAL MULLION (WELDED CONSTRUCTION ONLY)



This drawing and the design represented are the confidential and proprietary property of THE AIROLITE COMPANY and may not be disclosed, loaned, copied or used for any purpose other than design review and approval without the expressed written consent of THE AIROLITE COMPANY.

SCALE: NTS	LOUVER TYPE
DATE: 6/20/2014	REV. NO: 02
FILE: K638	K638