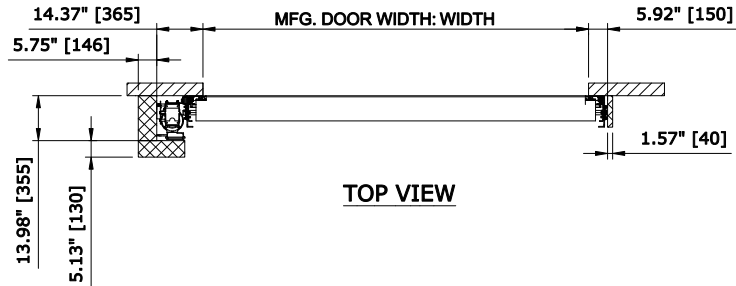
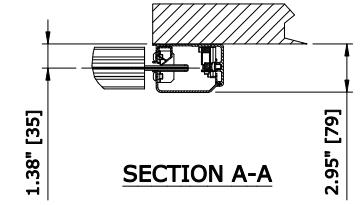


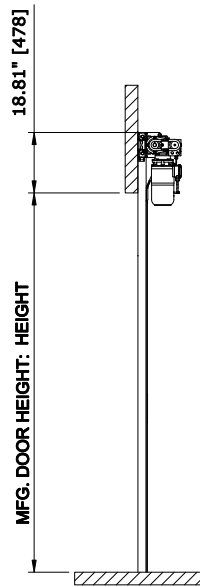
 RECOMMENDED FOR MAINTENANCE.



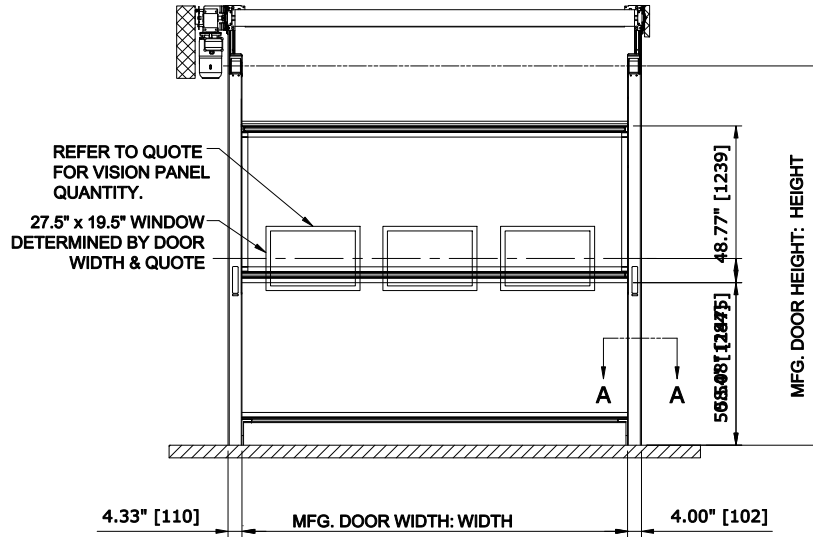
**TOP VIEW**



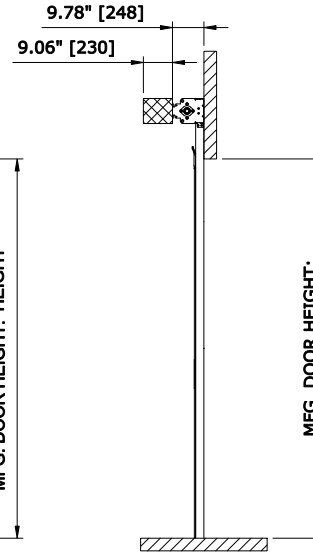
**SECTION A-A**



**LEFT VIEW**



**FRONT VIEW**



**RIGHT VIEW**

REFER TO QUOTE FOR VISION PANEL QUANTITY.  
27.5" x 19.5" WINDOW DETERMINED BY DOOR WIDTH & QUOTE

**RR300-LH DOOR - NO COVER**

CONTROL PANEL:  
CONTROLS

- DRIVE SIDE  RIGHT  LEFT
- PANEL MATERIAL  VINYL 400Z  2 PLY  ROLLTEX
- PANEL COLOR  \_\_\_\_\_
- WIND RIBS / WIND TABS  WIND RIBS  WIND TABS
- VISION OPTION  FULL WIDTH VISION SECTION  
 WINDOW (S) QTY. \_\_\_\_\_
- HOODS  NONE  
 ROLL COVER  
 ROLL AND MOTOR COVER  
 MATERIAL

- 208V  230V  480V  575V

- ACS100 - STEEL  ACS100 - STAINLESS STEEL

- PHOTO EYES  LIGHT CURTAINS

- MOTION DETECTOR  PULL CORD
- PUSH BUTTON  FLOOR LOOP

- HORN  RED
- AMBER STROBE  GREEN
- TRAFFIC LIGHT  LED SET

CUSTOMER:		APPROVED BY:	
LOCATION:		APPROVED WITH CHANGES BY:	
SALESMAN / DEALER:		DATE:	SCALE = NTS
DESCRIPTION:			
<b>RR300 APPROVAL DRAWING</b>			
DRAWING NO:		DESIGNER:	DATE:
8300T0003		J. REITZ	03/25/2007

Rev	Change	Date	Name
A	ENCODER / TITLE	12/08/18	JTF
	BLOCK CHANGE		