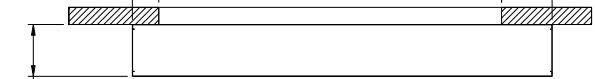


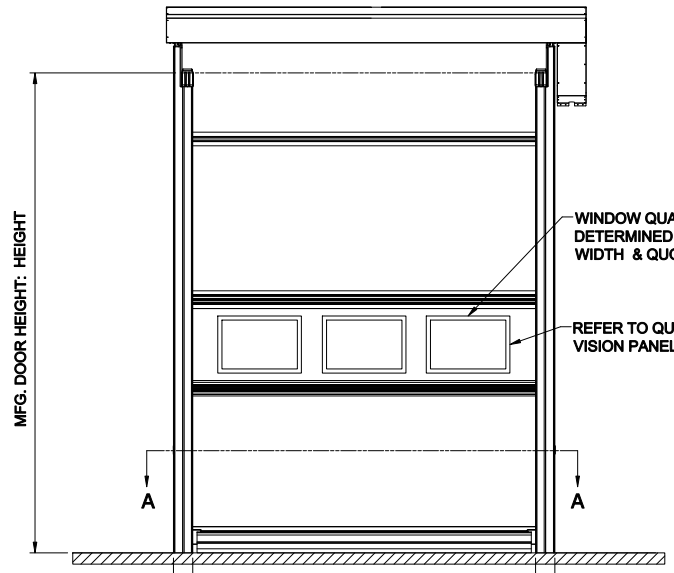
 RECOMMENDED FOR MAINTENANCE.

9.24" [235] MFG. DOOR WIDTH: WIDTH 17.69" [449]



TOP VIEW

18.15" [461]



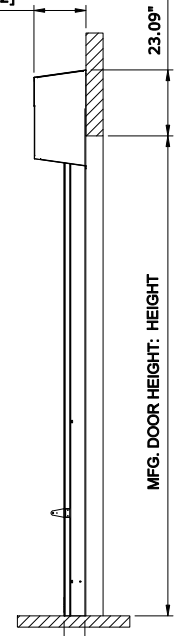
MFG. DOOR HEIGHT: HEIGHT

WINDOW QUANTITY DETERMINED BY DOOR WIDTH & QUOTE
REFER TO QUOTE FOR VISION PANEL QUANTITY

6.75" [171] MFG. DOOR WIDTH: WIDTH 6.75" [171]

FRONT VIEW

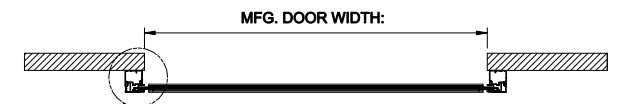
18.21" [462] 23.09" [586]



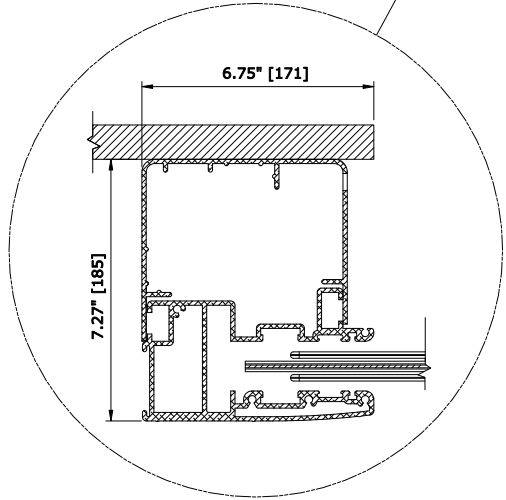
MFG. DOOR HEIGHT: HEIGHT

7.27" [185]

RIGHT VIEW



SECTION A-A (NTS)



ULTRAFAST RH DOOR-WITH COVERS

CONTROL PANEL:
CONTROLS

- DRIVE SIDE RIGHT LEFT
- PANEL MATERIAL VINYL 400Z 2 PLY ROLLETEX
- PANEL COLOR _____
- WIND RIBS STANDARD HIGH STRENGTH
- VISION OPTION FULL WIDTH VISION SECTION WINDOW (S) QTY. _____
- HOODS NONE ROLL COVER ROLL AND MOTOR COVER MATERIAL _____
- EGRESS YES NO
- CHAIN HOIST YES NO

- 208V 230V 480V 575V

- ACS100 - STEEL ACS100 - STAINLESS STEEL

- PHOTO EYES LIGHT CURTAINS

- MOTION DETECTOR PULL CORD
- PUSH BUTTON FLOOR LOOP
- _____
- _____

- HORN RED
- AMBER STROBE GREEN
- TRAFFIC LIGHT LED SET

CUSTOMER:		APPROVED BY:	
LOCATION:		APPROVED WITH CHANGES BY:	
SALESMAN / DEALER:		DATE:	SCALE = NTS
DESCRIPTION:			
ULTRAFAST APPROVAL DRAWING			
A	ENCODER / TITLE	12/18/18	JTF
Rev	Change	Date	Name
DRAWING NO:		DESIGNER:	DATE:
8300T0026		J. REITZ	08/28/2007