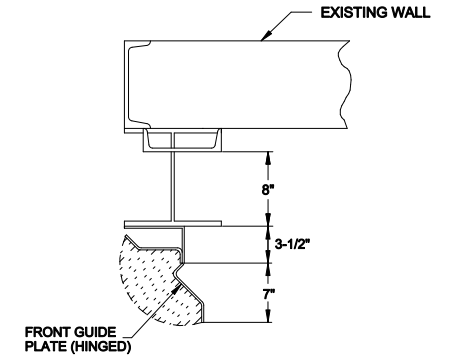


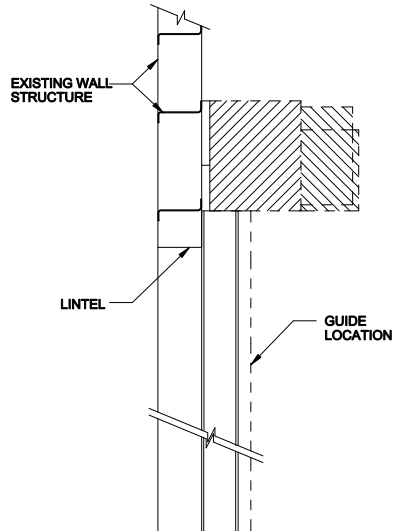
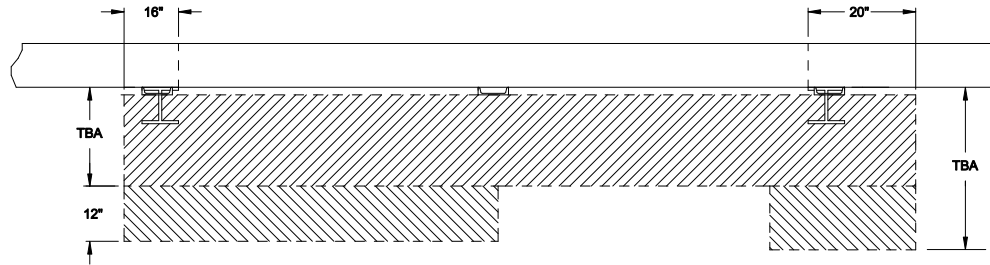
**NOTES:**

1. SHADED AREAS REPRESENT INSTALLATION CLEARANCES. REFER TO SHOP DRAWING FOR ACTUAL DIMENSIONS OF DOOR COMPONENTS.
2. ALL MOUNTING STEEL MUST BE SMOOTH.
3. GUIDE MOUNTING STEEL MUST PROTRUDE 8" ( $\pm 1/16"$ ) FROM DOOR AND IDLER BARREL MOUNTING STEEL.

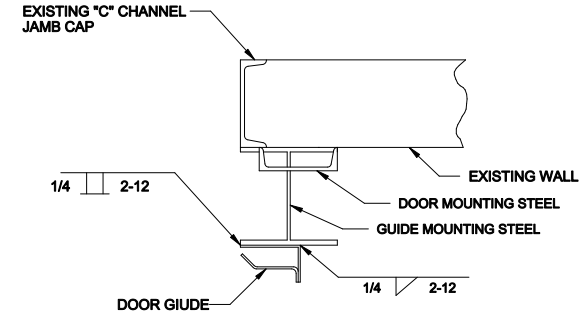
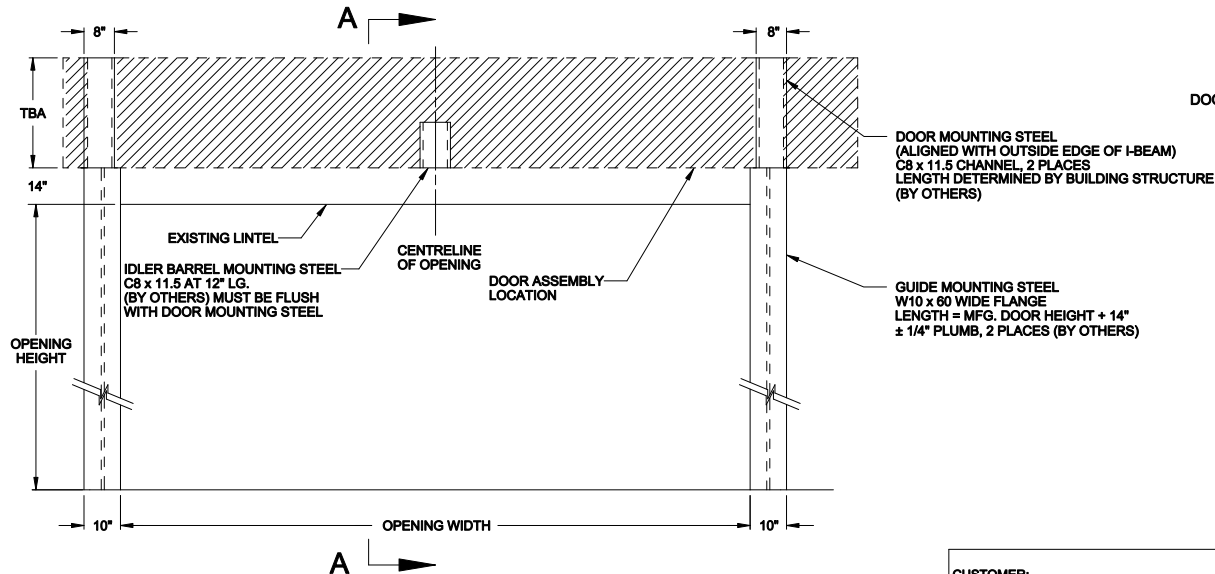
5. MOUNTING STRUCTURE MUST BE ABLE TO WITHSTAND FORCES EXERTED BY DOOR. (DOOR WEIGHT APPROX. LBS.)
6. ADDITIONAL 2" CLEARANCE REQUIRED ABOVE AND ON EACH END OF DOOR ASSEMBLY FOR THE INSTALLATION OF HOODS, IF APPLICABLE.



**SPACE REQUIRED FOR OPENING GUIDE**



**SECTION "A-A"**



**MOUNTING DOOR GUIDE ON FRAMING STEEL**

|                    |        |                                      |             |
|--------------------|--------|--------------------------------------|-------------|
| CUSTOMER:          |        | APPROVED BY:                         |             |
| LOCATION:          |        | APPROVED WITH CHANGES BY:            |             |
| SALESMAN / DEALER: |        | DATE:                                | SCALE = NTS |
|                    |        | DESCRIPTION:                         |             |
|                    |        | ULTRA BIG DW >=40'-0" MOUNTING STEEL |             |
| DRAWING NO:        |        | DESIGNER:                            | DATE:       |
| 8300T0136          |        | JT FISHER                            | 01/10/2019  |
| Rev                | Change | Date                                 | Name        |