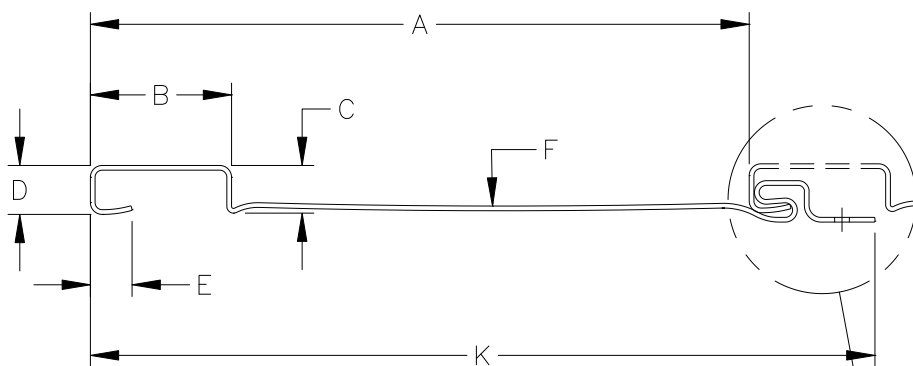
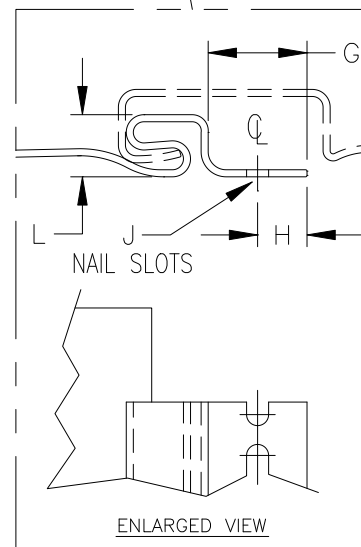


BOARD AND BATTEN SIDING



- A. INTERLOCKED PANEL WIDTH = 7.000 ± 0.030
- B. PANEL WIDTH = 1.500 ± 0.030
- C. CENTER BUTT HEIGHT = 0.506 ± 0.020
- D. BOTTOM BUTT HEIGHT = 0.520 ± 0.020
- E. BUTT HOOK LENGTH = 0.443 ± 0.030
- F. MAX FROM FLAT = 0.028 ± 0.020
- G. NAIL STRIP EDGE TO LOCK = 0.700 ± 0.050
- H. NAIL SLOTS CENTER = 0.350 ± 0.020
- J. NAIL SLOT HOLES = 0.156×0.970
- K. TOTAL PANEL WIDTH = 8.336 ± 0.030
- L. LOCK HEIGHT = 0.440 ± 0.060



WALL THICKNESS EXPOSED = $.050 \pm .001$
 WEIGHT PER FOOT - - - = .325 LBS.
 OVERALL LENGTH - - - = $10'-0" \pm 1/8"$

Alside®
 First On America's Homes