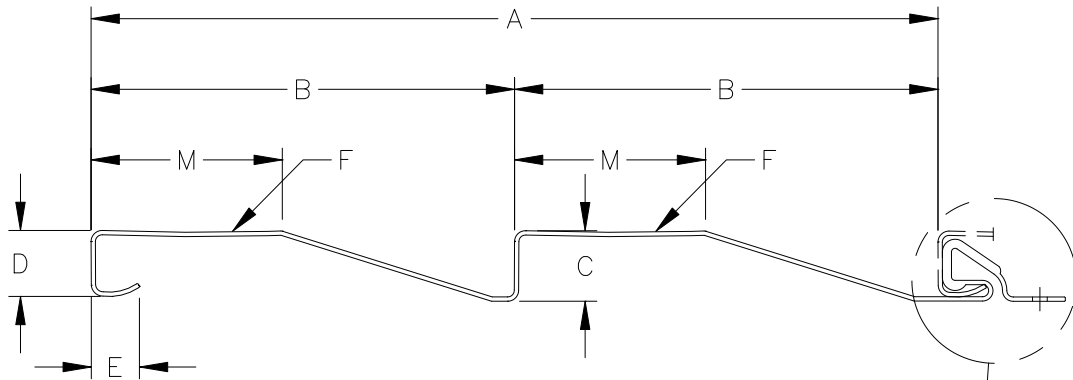
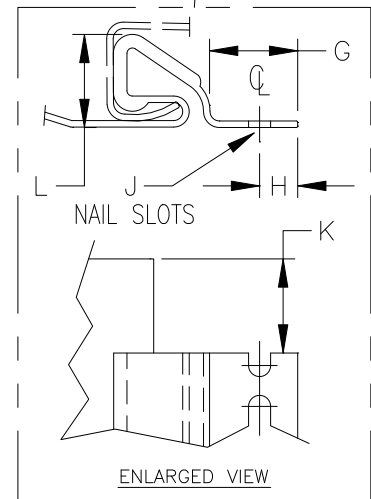


## CHARTER OAK DUTCHLAP SIDING DOUBLE 4 1/2"



- A. INTERLOCKED PANEL WIDTH =  $9.000 \pm 0.030$
- B. PANEL WIDTH =  $4.500 \pm 0.030$
- C. CENTER BUTT HEIGHT =  $0.750 \pm 0.010$
- D. BOTTOM BUTT HEIGHT =  $0.706 \pm 0.020$
- E. BUTT HOOK LENGTH =  $0.490 \pm 0.020$
- F. MAX FROM FLAT = 0.025
- G. NAIL STRIP EDGE TO LOCK =  $0.575 \pm 0.062$
- H. NAIL SLOTS CENTER =  $0.250 \pm 0.062$
- J. NAIL SLOT HOLES = 0.156 X 1.010
- K. END NOTCHING =  $2.000 \pm 0.125$
- L. LOCK HEIGHT =  $0.380 \pm 0.060$
- M. FLAT FACE WIDTH =  $2.250 \pm 0.030$



WALL THICKNESS EXPOSED =  $.046 \pm .001$   
 WEIGHT PER FOOT - - - = .380 LBS.  
 OVERALL LENGTH - - - = 12'-1"  $\pm 1/4$ "  
 WARP - - - - - = .125"/PANEL  
 WEEP HOLE - - - - - = .125"  
 NAIL CENTER - - - - - = 16"

  
 First On America's Homes