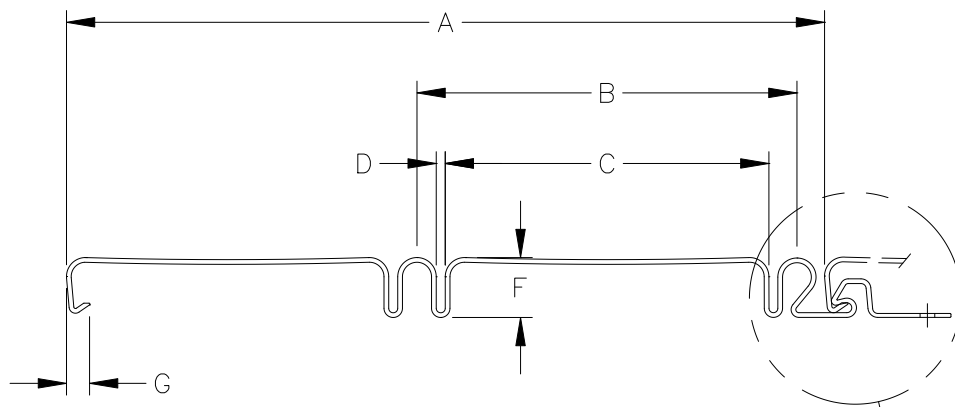
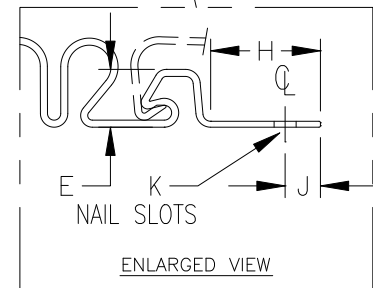


GREENBRIAR 8" BEADED SOFFIT



- A. INTERLOCKED PANEL WIDTH = 8.000 ± 0.030
- B. BEAD SPACING = 4.000 ± 0.030
- C. FACE WIDTH = 3.375 ± 0.030
- D. REVEAL GAP WIDTH = 0.100 ± 0.010
- E. LOCK HEIGHT = 0.405 ± 0.060
- F. TOTAL PROFILE THICKNESS = 0.625 ± 0.020
- G. HOOK LENGTH = $0.240 + 0.030 - 0.000$



- WALL THICKNESS EXPOSED = $.044 \pm .002$
- WEIGHT PER FOOT - - - = .330 LBS.
- OVERALL LENGTH - - - = $12'-6" \pm 1/4"$
- WARP - - - - - = $0.125"/\text{PANEL}$
- WEEP HOLE - - - - - = $0.125"$
- NAIL CENTER - - - - - = $16"$

