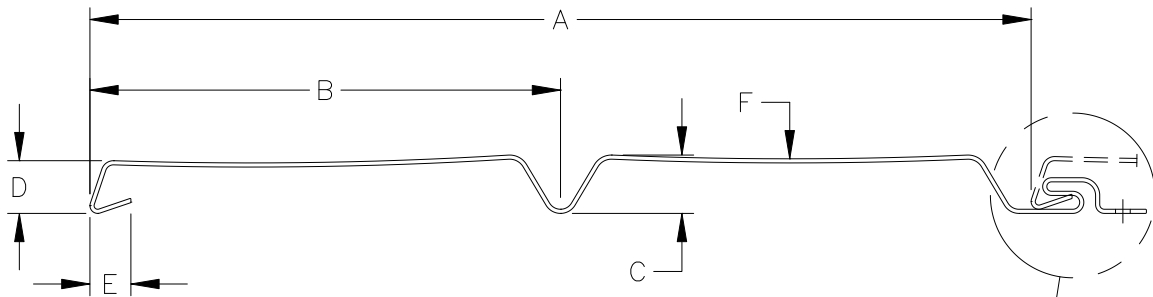
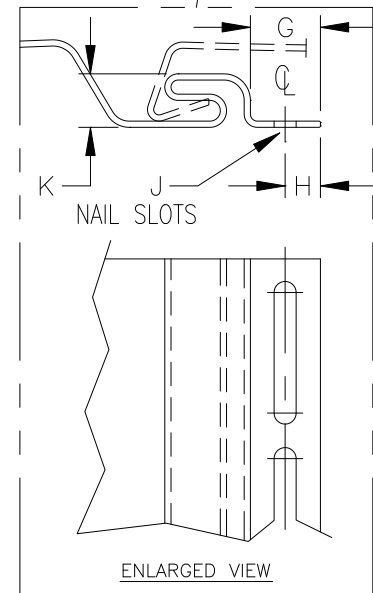


## SUPER SPAN VERTICAL 10" SOFFIT/SIDING



- A. INTERLOCKED PANEL WIDTH =  $10.000 \pm 0.030$
- B. BOTTOM PANEL =  $5.000 \pm 0.030$
- C. CENTER BUTT HEIGHT =  $0.620 \pm 0.020$
- D. BOTTOM BUTT HEIGHT =  $0.560 \pm 0.020$
- E. BUTT HOOK LENGTH =  $0.435 \pm 0.060$
- F. PROFILE PANEL RADIUS =  $44.97 \pm 0.016$
- G. NAIL STRIP EDGE TO LOCK =  $0.500 \pm 0.060$
- H. NAIL SLOTS CENTER =  $0.250 \pm 0.062$
- J. NAIL SLOT HOLES =  $0.156 \times 1.010$
- K. LOCK HEIGHT =  $0.379 \pm 0.030$



- WALL THICKNESS EXPOSED =  $0.044 \pm 0.001$
- WEIGHT PER FOOT - - - = 0.370 LBS.
- OVERALL LENGTH - - - =  $12'-0'' \pm 1/8''$
- WARP - - - - - =  $0.125''/\text{PANEL}$
- WEEP HOLE - - - - - =  $0.125''$
- NAIL CENTER - - - - - =  $16''$

