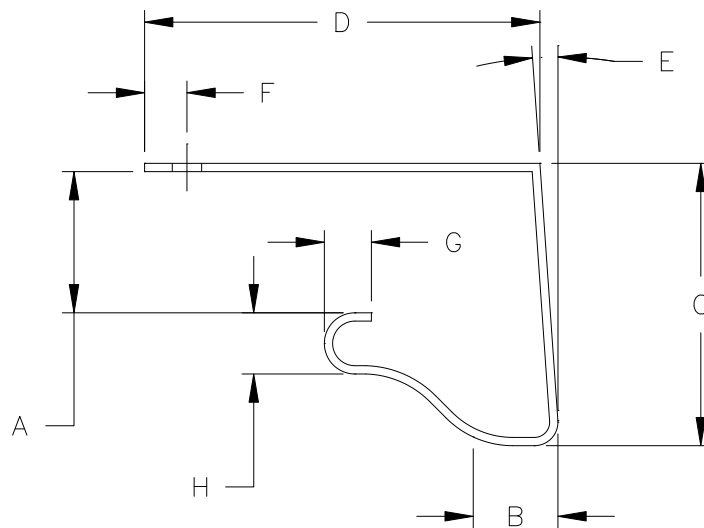


CUSTOM CROWN MOLDING



- A. SIDING POCKET WIDTH = 0.750 ± 0.020
- B. FACE WIDTH = 0.450 ± 0.020
- C. TOTAL PROFILE THICKNESS = 1.500 ± 0.020
- D. TOTAL PANEL WIDTH = 2.100 ± 0.050
- E. ANGLE = 3 - 4 DEGREES
- F. NAIL SLOT CENTER LINE = 0.225 ± 0.025
- G. HOOK LENGTH = 0.250 ± 0.010
- H. EXPOSED BEAD WIDTH = 0.325 ± 0.010

WALL THICKNESS EXPOSED = $.040 \pm .002$
 WEIGHT PER FOOT - - - = .165 LBS.
 OVERALL LENGTH - - - = $12'-6" \pm 1/8"$
 WEEP HOLE - - - - - = N/A
 WARP - - - - - = 1"
 NAIL CENTER - - - - - = 16"

