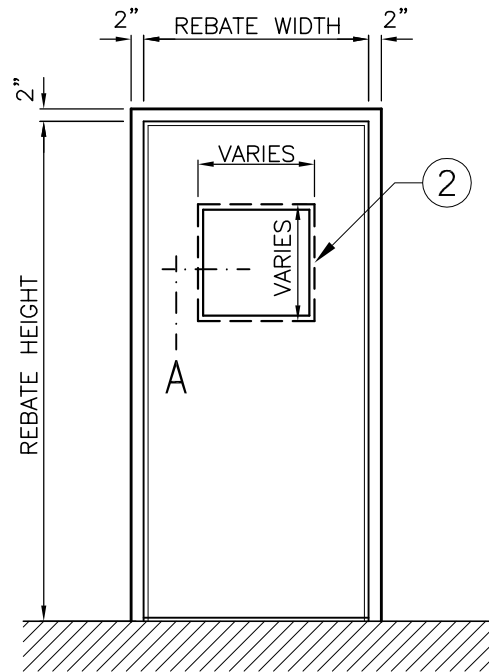


LEGEND:

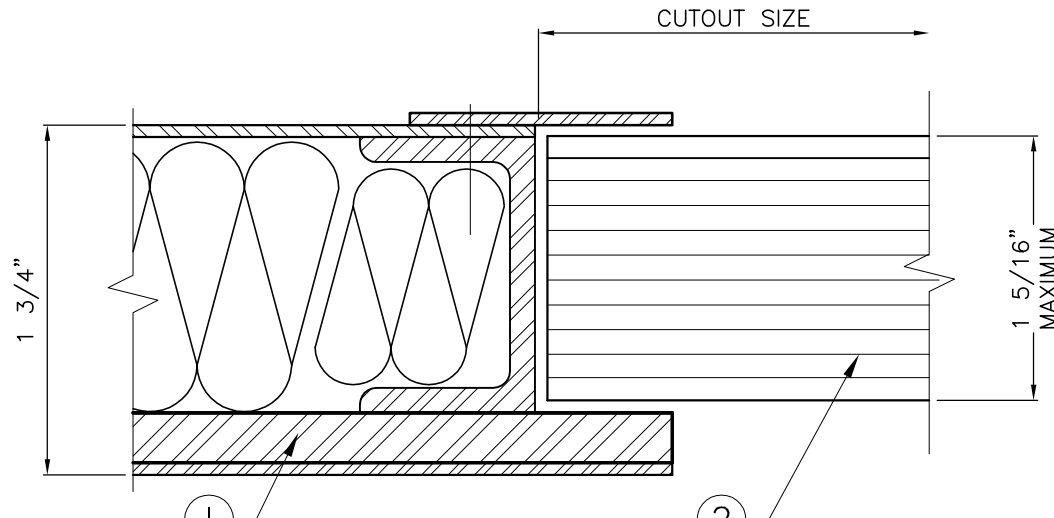
- 1. ARMOUR SHIELD LEVEL 4.
- 2. ARMOUR SHIELD 1 5/16" MAXIMUM THICK GLASS LEVEL 4, FACTORY INSTALLED.

NOTE:

IF GLASS IS SUPPLIED BY OTHERS FOR SITE INSTALLATION, CUSTOMER MUST ENSURE THAT THE GLASS HAS BEEN TESTED AND IS CERTIFIED UNDER UL 752.



ELEVATION



SECTION 'A'

NOTE: - THE SIZES SHOWN IN THE ELEVATION REFER TO THE DOOR CUTOUT SIZE.

NOTE:
FRAME MUST BE INSTALLED AT FINISHED FLOOR HEIGHT.
(DO NOT EMBED IN FLOOR)

OUR STOCK OPTIONS

STOCK DOORS ARE AVAILABLE AT 3'-0" x 7'-0" WITH A 12 3/8"x12 3/8" CUTOUT TO RECEIVE 12"x12" BULLET RESISTANT GLASS TO UL 752 LEVEL 4. THE GLASS WILL BE FACTORY INSTALLED.