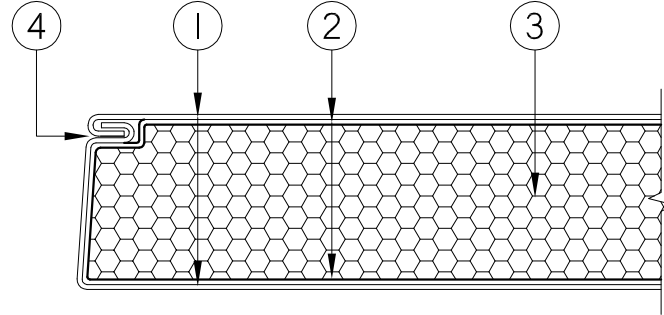
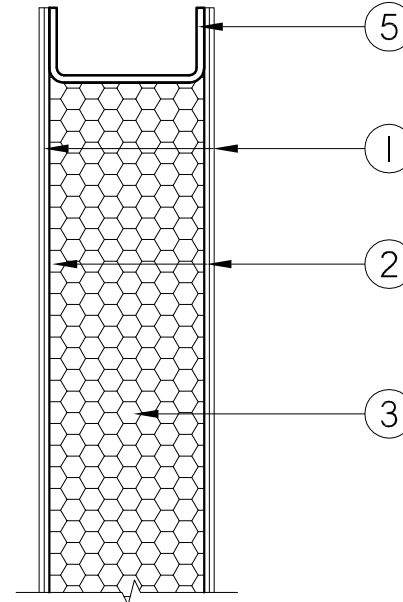


LEGEND:

1. CLADDING MATERIAL AND FINISH SELECTION BY CUSTOMER.
2. 18 GAUGE GALV. FORMED BASE DOOR.
3. FILL ALL VOIDS WITH HONEYCOMB CORE.
4. FORMED VISIBLE LOCKSEAM DOOR EDGES.
5. INVERTED TOP AND BOTTOM END CHANNELS.



SECTION 'A'



SECTION 'B'

GLAZING BY: _____
 GLAZING THICKNESS: _____
 SINGLE PANE _____
 MULTIPANE _____
 HARDWARE BY: _____

DOORS SHALL BE TEMPLATED AND REINFORCED FOR HARDWARE AS REQUIRED. ALL DRILLING AND TAPPING FOR SURFACE MOUNTED HARDWARE IS BY THE HARDWARE INSTALLERS.

ALL REINFORCING TO BE MILD STEEL EXCEPT WHERE DOORS ARE STAINLESS STEEL IN THE (_____).

DOORS SHALL BE:

- ___ GA. HONEYCOMB CORE
- ___ GA. URETHANE CORE
- ___ GA. STIFF CORE
- (_____) WHERE DOORS ARE FIRE RATED

FINISH SHALL BE:

- CLADDING - _____(SELECT)
- FINISH - _____(SELECT)
- FULLY WELDED SEAMLESS EDGES
- FLUSH CLOSED TOP
- FLUSH CLOSED BOTTOM

NOTE:

STANDARD STEEL DOOR UNDERCUT IS 3/4".
 ADVISE WHERE ADDITIONAL UNDERCUT REQUIRED.

FIRE RATINGS

- 20 MINUTE
- 45 MINUTE
- 90 MINUTE
- 180 MINUTE (SINGLES ONLY)

CLADDING

- A200 BRONZE
- A260 BRONZE
- MUNTZ
- A280 BRASS
- OTHER
- 304-4SS
- 304-8SS
- 316-4SS
- 316-8SS