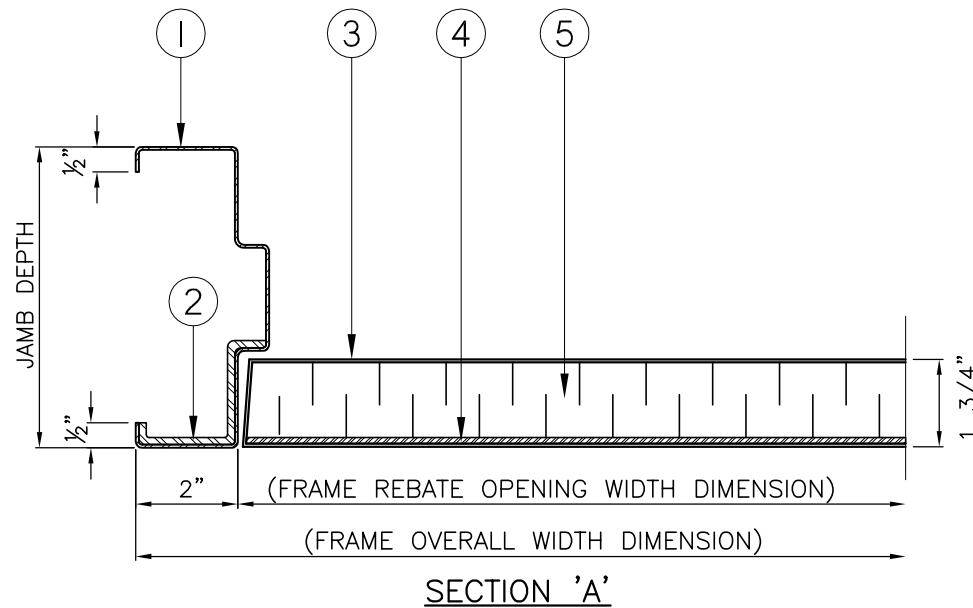
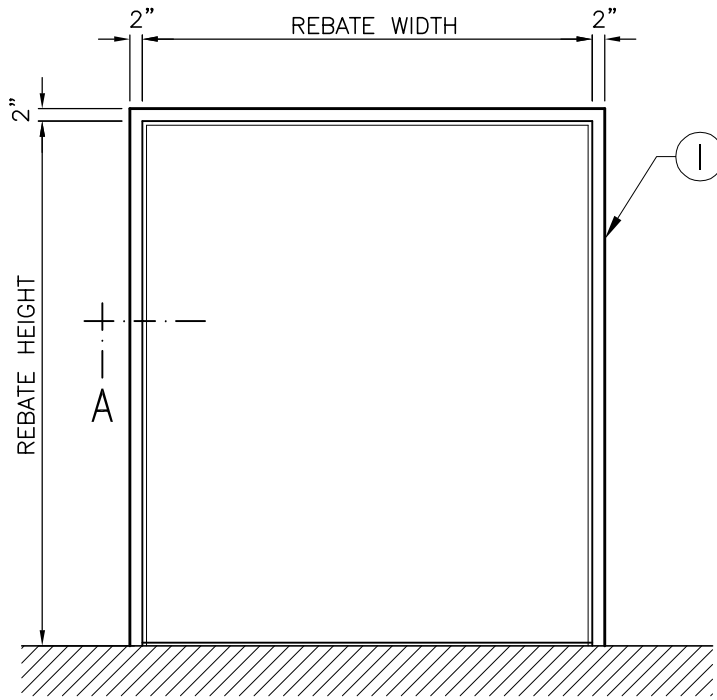


LEGEND:

1. FORMED PRESSED STEEL FRAME.
2. LEAD LINING LAMINATED AROUND FRAME FACE & JAMB.
3. STEEL DOOR SKINS.
4. LEAD LINING LAMINATED TO PULL SIDE DOOR SKIN.
5. STRUCTURAL INTERNAL DOOR CORE.
6. PRIMARY ASTRAGAL SCREWED TO DOOR.
7. SECONDARY ASTRAGAL SCREWED TO DOOR.
(REQUIRED WHEN PRIMARY ASTRAGAL IS NOTCHED)



NOTE :

- SIDELITE, BORROWED LITE FRAMES, AND DOORS WITH VISION LITES ARE AVAILABLE, PLEASE CONSULT FACTORY.

NOTE:
FRAME MUST BE INSTALLED AT FINISHED FLOOR HEIGHT.
(DO NOT EMBED IN FLOOR)

LEAD THICKNESS TABLE

2 LBS	=	1/32"
4 LBS	=	1/16"
8 LBS	=	1/8"

CONSULT FACTORY IF LEAD TO EXCEED 8lbs.

PRODUCT OPTIONS

- TACK & FILLED "SEAMLESS EDGE SEAMS"
- FLUSH CLOSED TOP CAP
- FLUSH CLOSED BOTTOM CAP

UL FIRE RATINGS:

- 20MIN. 45MIN.
- 90MIN. 180MIN.



TYPICAL FIRE RATED LEAD LINED PAIRED STEEL FRAME AND DOOR UNIT

JOB NO:

SHEET: 1

OF: 1