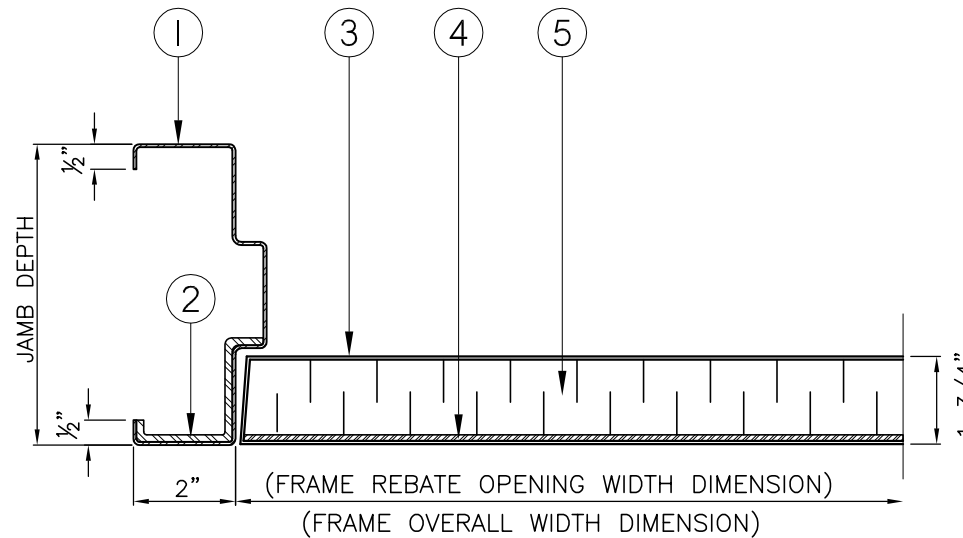
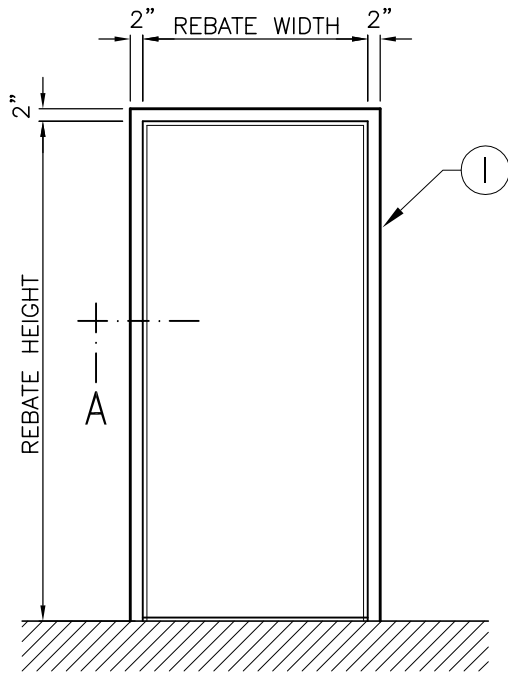


LEGEND:

1. FORMED PRESSED STEEL FRAME.
2. LEAD LINING LAMINATED AROUND FRAME FACE & JAMB.
3. STEEL DOOR SKINS.
4. LEAD LINING LAMINATED TO PULL SIDE DOOR SKIN.
5. STRUCTURAL INTERNAL DOOR CORE.



NOTE:

SIDELITE, BORROWED LITE FRAMES, AND DOORS WITH VISION LITES ARE AVAILABLE, PLEASE CONSULT FACTORY.

NOTE:
 FRAME MUST BE INSTALLED AT FINISHED FLOOR HEIGHT.
 (DO NOT EMBED IN FLOOR)

LEAD THICKNESS TABLE

2 LBS	=	1/32"
4 LBS	=	1/16"
8 LBS	=	1/8"

CONSULT FACTORY IF LEAD TO EXCEED 8LBS.

PRODUCT OPTIONS

- TACK & FILLED "SEAMLESS EDGE SEAMS
- FLUSH CLOSED TOP CAP
- FLUSH CLOSED BOTTOM CAP

UL FIRE RATINGS:

- 20MIN. 45MIN.
- 90MIN. 180MIN.