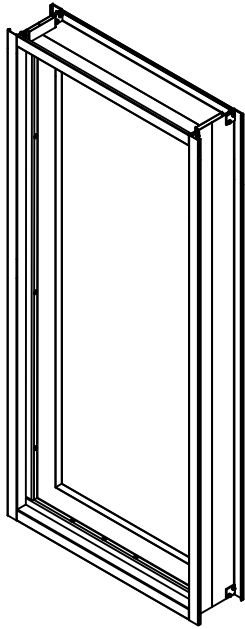


## PRODUCTS OPTIONS:

### BORROWED LITE CORE

#### MATERIAL

- o 16 GA. GALVANNEALED STEEL
- o 16 GA. 304 STAINLESS STEEL
- o 16 GA. 316 STAINLESS STEEL



### FRAME CONSTRUCTION

- o BUTT JOINT<sup>2</sup>

<sup>1</sup>MATERIALS AND FINISHES ARE TYPICAL. CONSULT AMBICO FOR ADDITIONAL OPTIONS.

<sup>2</sup>MECHANICALLY FASTENED.

### GENERAL NOTES

- JAMBS, HEAD AND SILL TO BE MECHANICALLY FASTENED USING A BUTT JOINT CONNECTION,
- ALL GRAINED FINISHES SHALL HAVE VERTICAL GRAIN IN JAMBS AND VERTICAL MULLIONS AND HORIZONTAL GRAIN IN HEADS, SILLS AND HORIZONTAL MULLIONS. INTERSECTING MULLIONS, MULLIONS AND PERIMETERS AND CONNECTIONS BETWEEN UNEQUAL FACE DIMENSIONS SHALL HAVE VISIBLE BUTT JOINT CONNECTIONS.

### CLADDING

#### BRONZE/BRASS MATERIALS & FINISHES<sup>1</sup> MATERIALS

- o 0.050" C220 BRONZE
- o 0.050" C230 RED BRASS
- o 0.050" C280 MUNTZ BRASS
- o 0.050" C385 ARCHITECTURAL BRONZE

#### FINISHES

- o BRUSHED
- o POLISHED

#### STAINLESS STEEL MATERIALS & FINISHES<sup>1</sup> MATERIALS

- o 18 GA. 304 STAINLESS
- o 18 GA. 316 STAINLESS

#### FINISHES

- o 2B, NOT PAINTED
- o #4
- o #6
- o #7
- o #8 XL BUFF
- o #8 SUPREME
- o XL BLEND S
- o XL SUEDE

**ISOMETRIC**  
3/4" = 1'-0"

DRAWING TITLE:

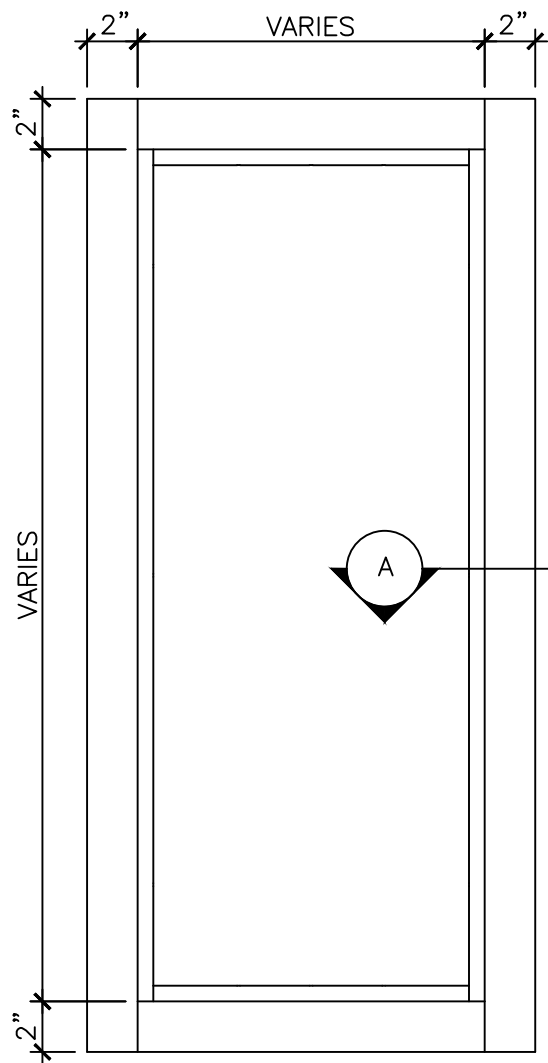
**CLAD BORROWED LITE SPECIFICATION SHEET 1 OF 2**

DATE: MARCH 7, 2017

DRAWN BY: TWB

REVISION: 0

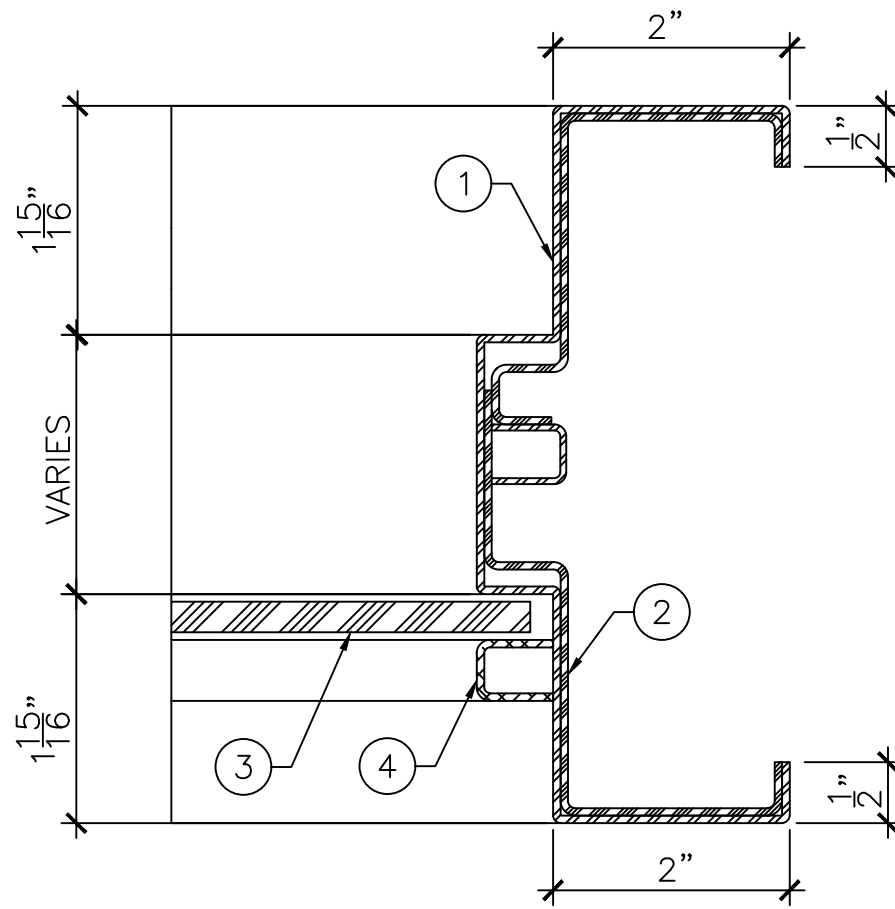




**ELEVATION**  
 $\frac{3}{4}'' = 1'-0''$

LEGEND:

- 1. CLADDING.
- 2. FRAME CORE.
- 3. GLASS BY OTHERS
- 4. REMOVABLE GLAZING BEADS.



**DETAIL "A"**  
 $1'-0'' = 1'-0''$



DRAWING TITLE:

CLAD BORROWED LITE SPECIFICATION SHEET 2 OF 2

DATE: MARCH 7, 2017

DRAWN BY: TWB

REVISION: 0