

PRODUCTS OPTIONS:

BORROWED LITE

STAINLESS STEEL MATERIALS AND FINISHES¹

MATERIALS

- TYPE 304 STAINLESS
- TYPE 316 STAINLESS

THICKNESSES

- 12 GA. ○ 14 GA.
- 16 GA.

FINISHES

- 2B, NOT PAINTED ○ #4 ○ #6 ○ #7
- #8 XL BUFF ○ #8 SUPREME ○ XL BLEND S ○ XL SUEDE

CORNER CONSTRUCTION

- BUTT JOINT²
- MITERED JOINT³

¹ MATERIALS AND FINISHES ARE TYPICAL. CONSULT AMBICO FOR ADDITIONAL OPTIONS.

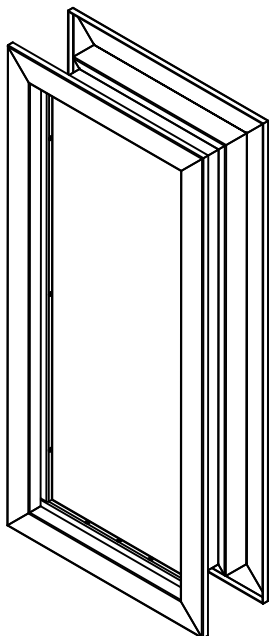
² PLUG WELDED VIA PLATES.

³ FULLY WELDED FOR STAINLESS STEELS WITH GRAINED FINISHES. MECHANICALLY FASTENED FOR ALL OTHER FINISHES.

GENERAL NOTES

- ALL GRAINED FINISHES SHALL HAVE VERTICAL GRAIN IN JAMBS AND HORIZONTAL GRAIN IN HEADS AND SILLS. ALL FACE WELDS SHALL BE GROUND AND RE-GRAINED BUFFED TO A VISIBLE HAIRLINE AT MITER. INTERSECTING CONNECTIONS BETWEEN UNEQUAL FACE DIMENSIONS AND ALL POLISHED MIRROR FINISHES SHALL HAVE VISIBLE BUTT JOINT CONNECTIONS.
- WELDED FRAMES WITH ANY FACE GREATER THAN 2" MUST BE 14 GA OR THICKER.

ISOMETRIC
3/4" = 1'-0"



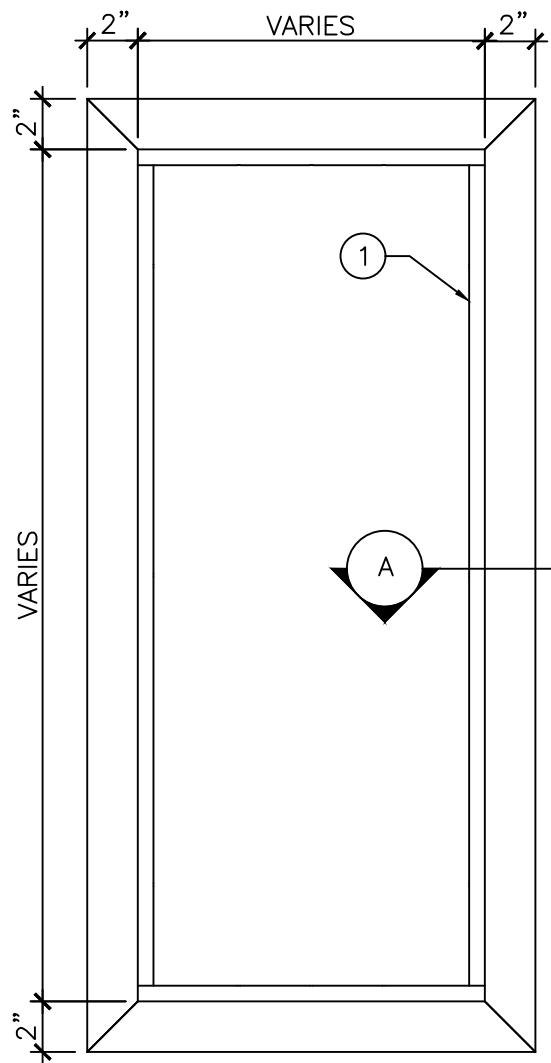
DRAWING TITLE:

STAINLESS STEEL BORROWED LITE SPECIFICATION SHEET 1 OF 2

DATE: MARCH 7, 2017

DRAWN BY: TWB

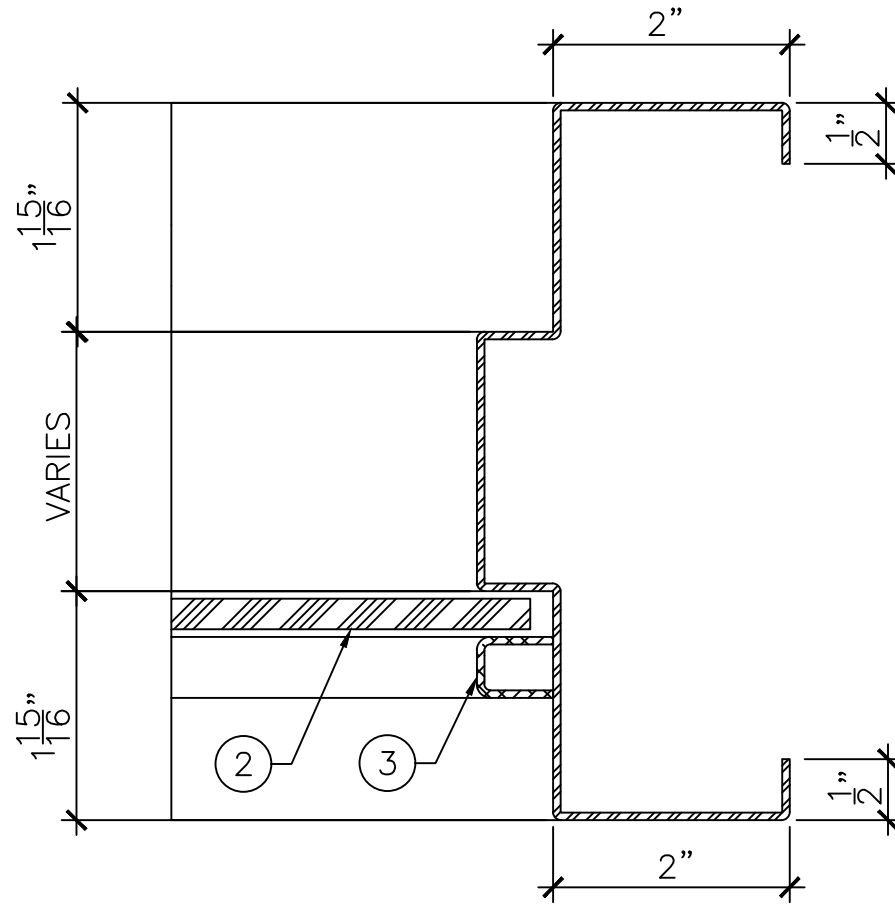
REVISION: 0



ELEVATION
 $\frac{3}{4}'' = 1'-0''$

LEGEND:

- 1. STAINLESS STEEL FRAME.
- 2. GLASS BY OTHERS
- 3. REMOVABLE GLAZING BEADS.



DETAIL "A"
 $1'-0'' = 1'-0''$



DRAWING TITLE:

STAINLESS STEEL BORROWED LITE SPECIFICATION SHEET 2 OF 2

DATE: MARCH 7, 2017

DRAWN BY: TWB

REVISION: 0