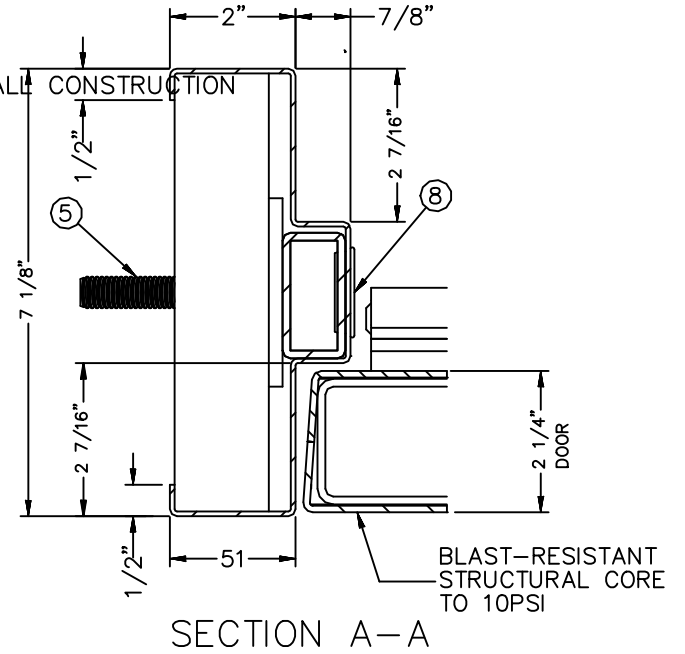
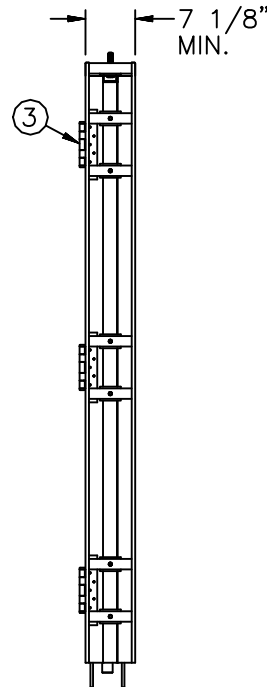
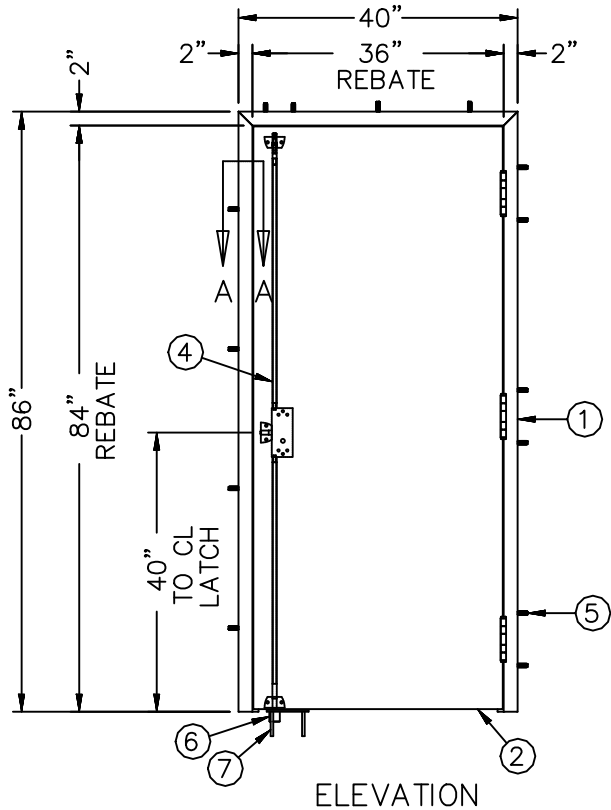


NOTES:

1. ARCHITECT AND/OR CONTRACTOR TO ENSURE WALL CAN RESIST APPLIED LOADING.
2. QUANTITY OF SCREWS OR CONCRETE ANCHORS AND THEIR LOCATION DEPENDS ON WALL CONSTRUCTION AND THUS ARE SUBJECT TO CHANGE



| Item No. | Title |
|----------|---|
| 1 | 10 psi Blast-Resistant Frame |
| 2 | 10 psi Blast-Resistant Door |
| 3 | 6" Heavy Weight Hinge w/ Welded Knuckles |
| 4 | Surface-Mount 3-pt Blast-Resistant Hardware |
| 5 | Hex Bolt or Concrete Anchor |
| 6 | Floor Plate |
| 7 | Flat-Head Concrete Anchor |
| 8 | Hole Plug - 1.25" Hole |