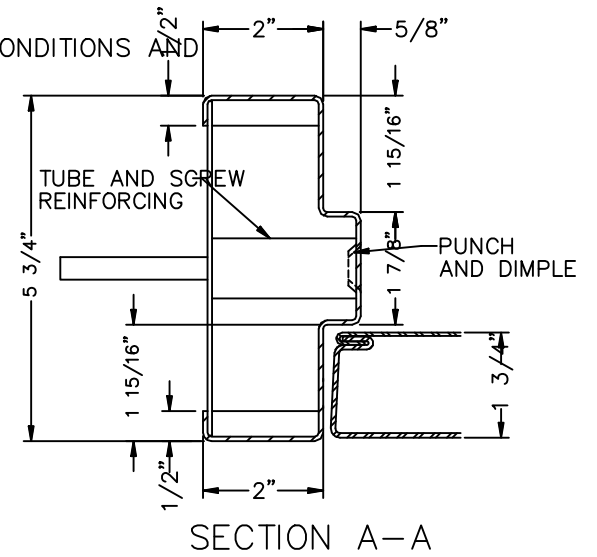
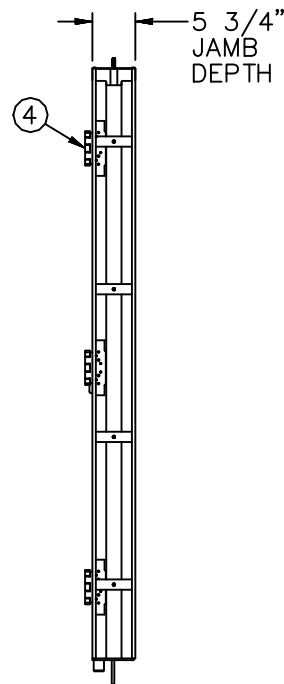
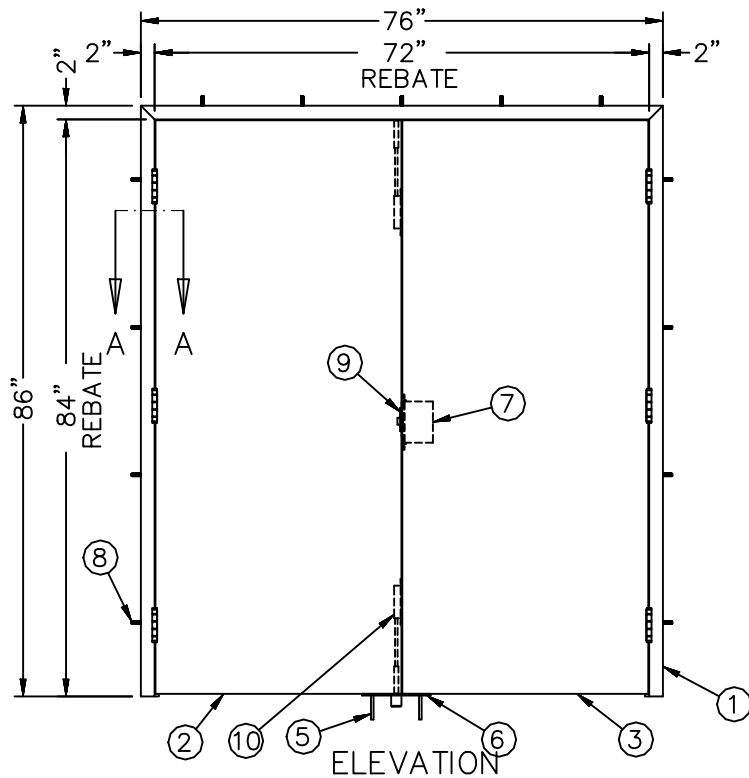


NOTES:

1. ARCHITECT AND/OR CONTRACTOR TO ENSURE WALL CAN RESIST APPLIED LOADING
2. QUANTITY OF SCREWS OR CONCRETE ANCHORS AND THEIR LOCATION DEPENDS ON WALL CONDITIONS AND
THUS ARE SUBJECT TO CHANGE



Item NO.	Title
1	1 psi Frame - Pair
2	1 psi Inactive Door
3	1 psi Active Door
4	4 1/2" x 4 1/2" Heavy Weight Hinge
5	Flat Head Concrete Anchor
6	1 psi Floor Plate
7	Mortise Lock or Exit Device
8	Machine Screw or Concrete Anchor
9	Blast-Reinforced Strike
10	Manual Flush Bolt

1 PSI 100% REBOUND BLAST PAIR

SHEET: 1 OF: 1