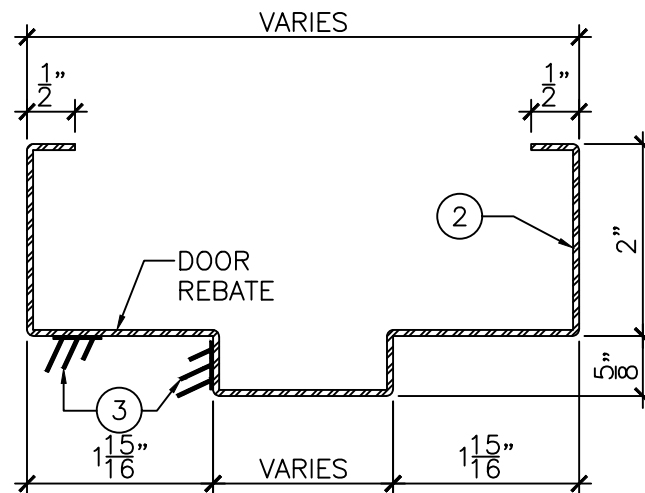


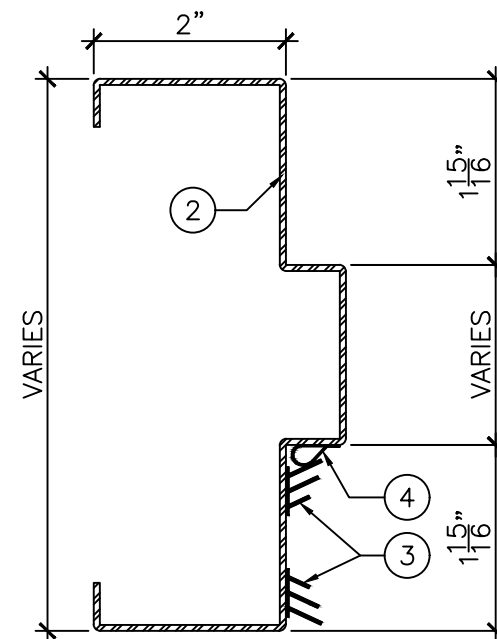
ELEVATION
3/4" = 1'-0"



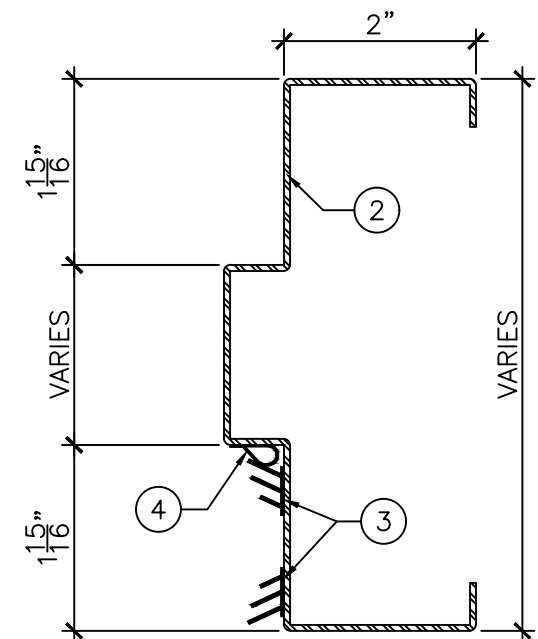
DETAIL "A"
6" = 1'-0"

LEGEND:

1. 1/2" HIGH STEPPED ACOUSTIC THRESHOLD.
2. PRESSED STEEL ACOUSTIC FRAME TO BE INSTALLED AT TOP LEVEL OF FINISHED FLOOR COVERING MATERIAL.
(DO NOT EMBED IN FLOOR FINISHING).
3. ACOUSTIC PERIMETER SEAL TO BE FITTED AND FASTENED TO JAMBS AND HEAD BY INSTALLER ON SITE.
4. ACOUSTIC PERIMETER BULB SEAL TO BE FITTED AND FASTENED TO JAMBS ONLY BY INSTALLER ON SITE.



DETAIL "B"
6" = 1'-0"



DETAIL "C"
6" = 1'-0"



DRAWING TITLE:

ACOUSTIC STEEL SINGLE FRAME AND PERIMETER SEALS FOR FIRE RATED WOOD DOORS
STC 36 TO STC 40

DATE: OCTOBER 17, 2016

DRAWN BY: TWB

REVISION: 0