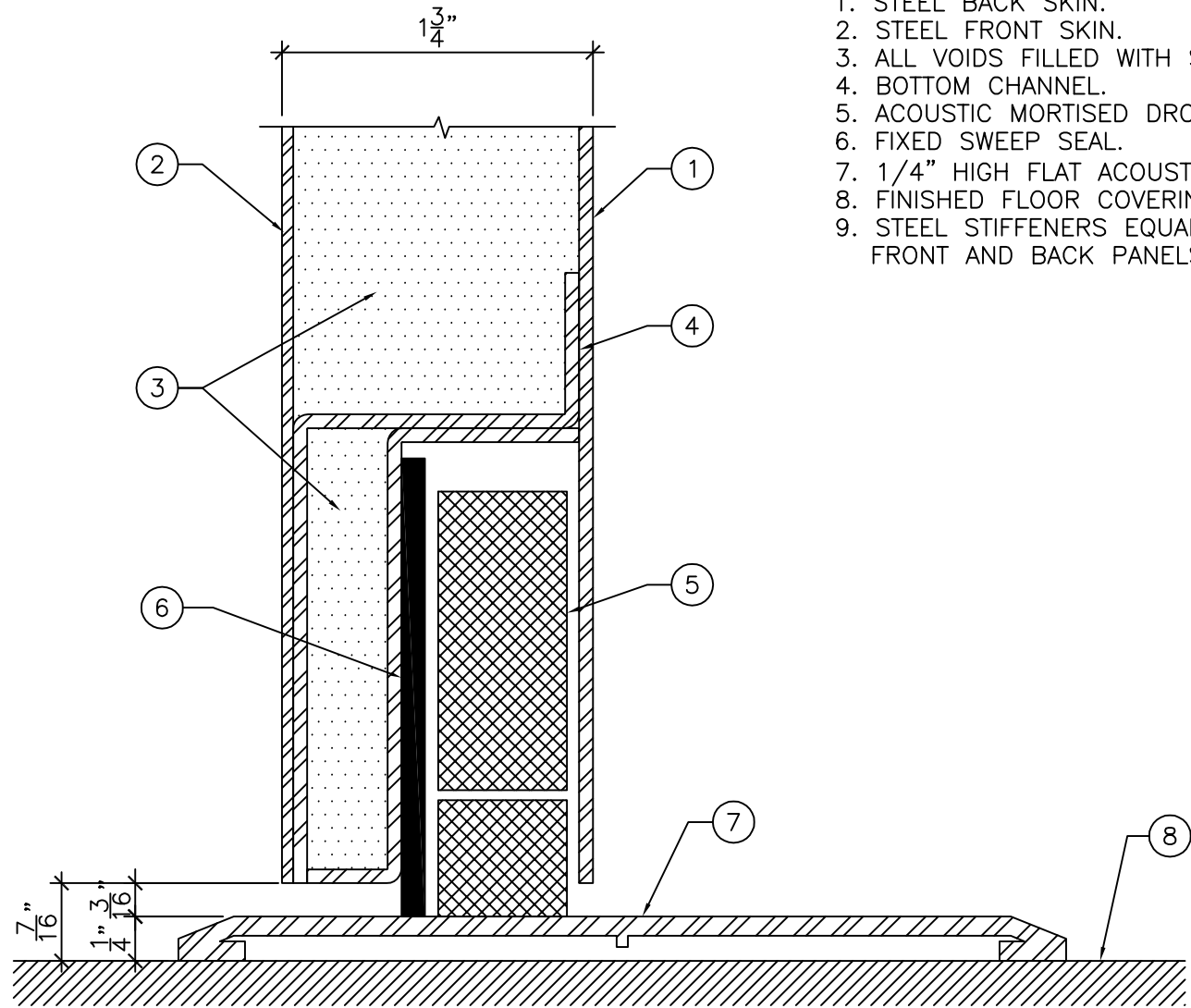


ELEVATION

3/4" = 1'-0"



BOTTOM DETAIL "A"

1"-0" = 1'-0"

LEGEND:

1. STEEL BACK SKIN.
2. STEEL FRONT SKIN.
3. ALL VOIDS FILLED WITH SOUND DEADENER.
4. BOTTOM CHANNEL.
5. ACOUSTIC MORTISED DROP DOOR BOTTOM.
6. FIXED SWEEP SEAL.
7. 1/4" HIGH FLAT ACOUSTIC THRESHOLD.
8. FINISHED FLOOR COVERING MATERIAL.
9. STEEL STIFFENERS EQUALLY SPACED ON FRONT AND BACK PANELS.



DRAWING TITLE:

**ACOUSTIC STEEL DOOR AND DOOR BOTTOM
FROM STC 39 TO STC 46**

DATE: OCTOBER 17, 2016

DRAWN BY: TWB

REVISION: 0