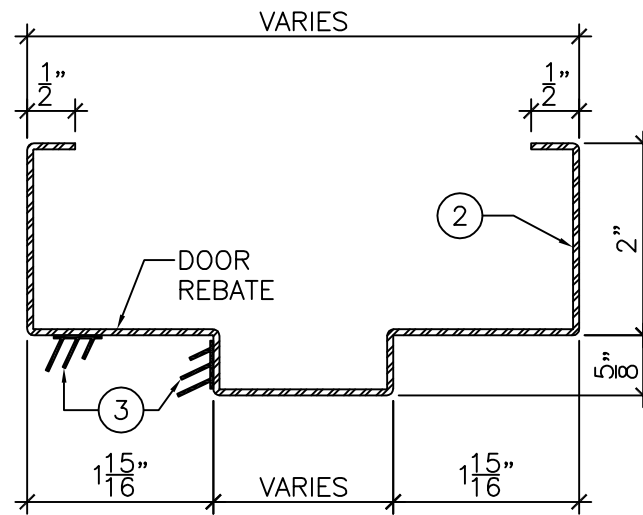
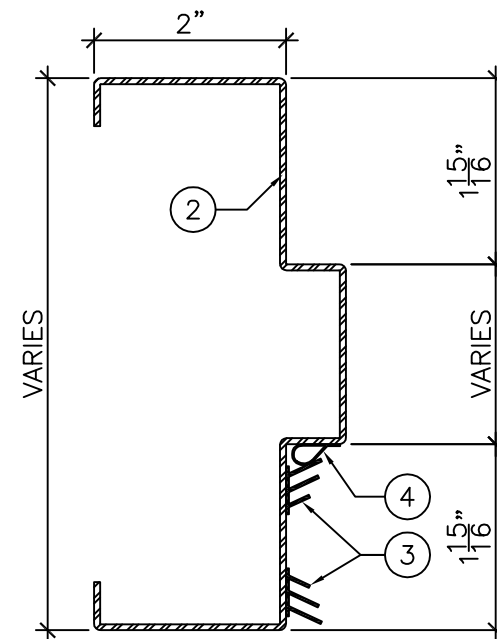


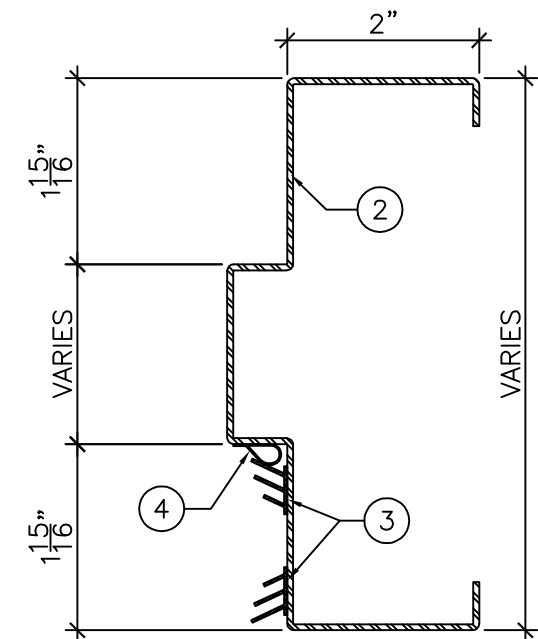
ELEVATION
3/4" = 1'-0"



DETAIL "A"
6" = 1'-0"



DETAIL "B"
6" = 1'-0"



DETAIL "C"
6" = 1'-0"

LEGEND:

1. 1/4" HIGH ACOUSTIC THRESHOLD x 5" WIDE TO BE INSTALLED ON FINISHED FLOOR.
2. PRESSED STEEL ACOUSTIC FRAME TO BE INSTALLED AT TOP LEVEL OF FINISHED FLOOR COVERING MATERIAL. (DO NOT EMBED IN FLOOR FINISHING).
3. ACOUSTIC PERIMETER SEAL TO BE FITTED AND FASTENED TO JAMBS AND HEAD BY INSTALLER ON SITE.
4. ACOUSTIC PERIMETER BULB SEAL TO BE FITTED AND FASTENED TO JAMBS ONLY BY INSTALLER ON SITE.



DRAWING TITLE:

ACOUSTIC STEEL PAIRED FRAME AND PERIMETER SEALS FOR STEEL DOORS
STC 39 TO STC 46

DATE: OCTOBER 17, 2016

DRAWN BY: TWB

REVISION: 0