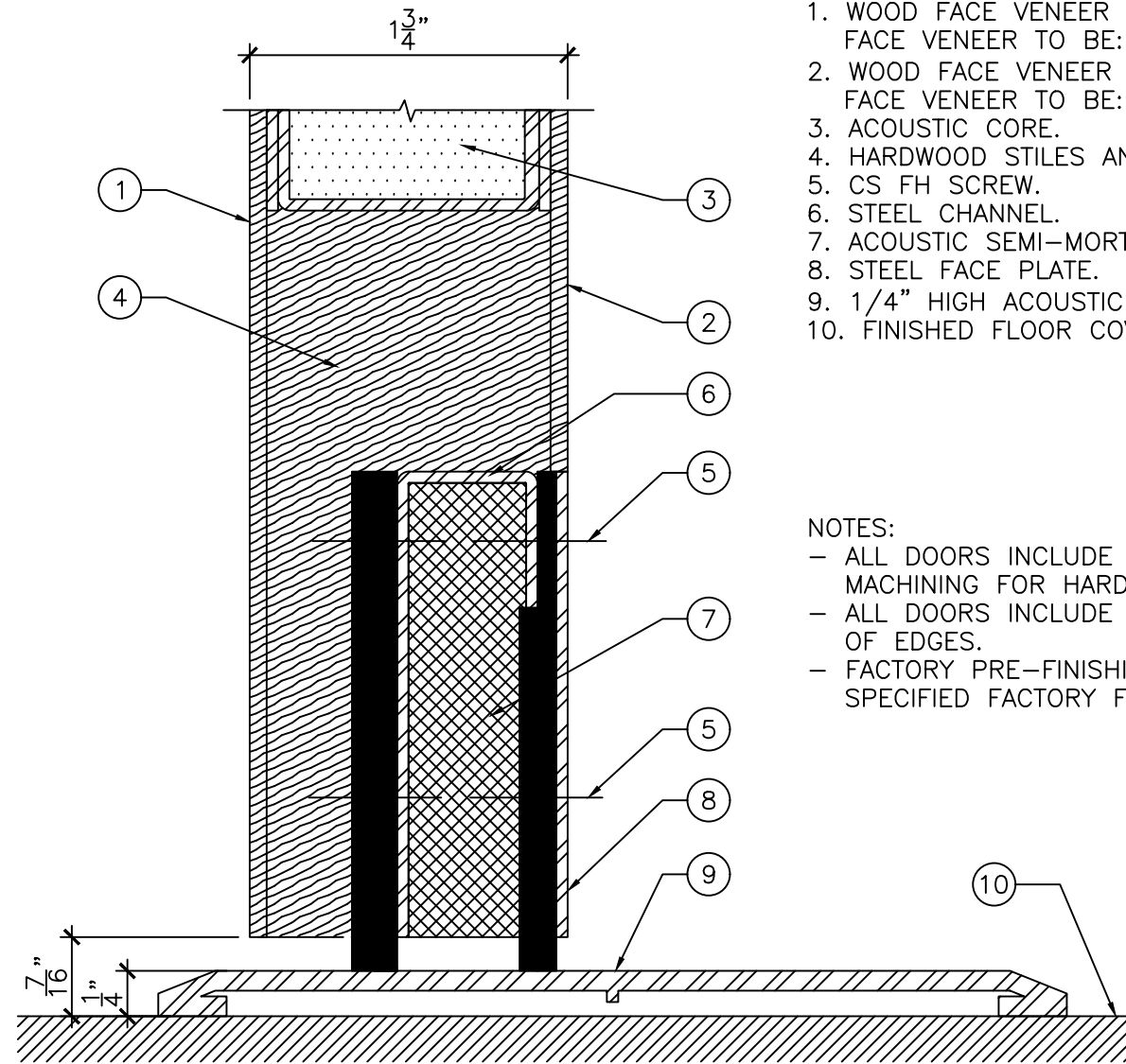


ELEVATION
 $3/4" = 1'-0"$



BOTTOM DETAIL "A"
 $1"-0" = 1'-0"$

LEGEND:

1. WOOD FACE VENEER (PULL SIDE).
FACE VENEER TO BE: --
2. WOOD FACE VENEER (PUSH SIDE).
FACE VENEER TO BE: --
3. ACOUSTIC CORE.
4. HARDWOOD STILES AND RAILS.
5. CS FH SCREW.
6. STEEL CHANNEL.
7. ACOUSTIC SEMI-MORTISED DOOR BOTTOM.
8. STEEL FACE PLATE.
9. 1/4" HIGH ACOUSTIC THRESHOLD.
10. FINISHED FLOOR COVERING MATERIAL.

NOTES:

- ALL DOORS INCLUDE FACTORY PRE-MACHINING FOR HARDWARE.
- ALL DOORS INCLUDE FACTORY SEALING OF EDGES.
- FACTORY PRE-FINISHING IS OPTIONAL.
SPECIFIED FACTORY FINISH TO BE: --



DRAWING TITLE:

**WOOD CLAD ACOUSTIC DOOR - NON FIRE RATED
 FROM STC 47 TO STC 50**

DATE: OCTOBER 17, 2016

DRAWN BY: TWB

REVISION: 0