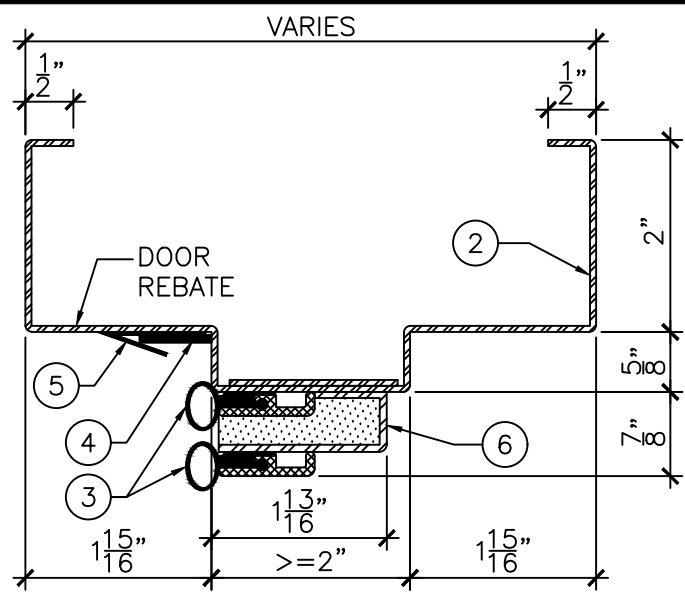
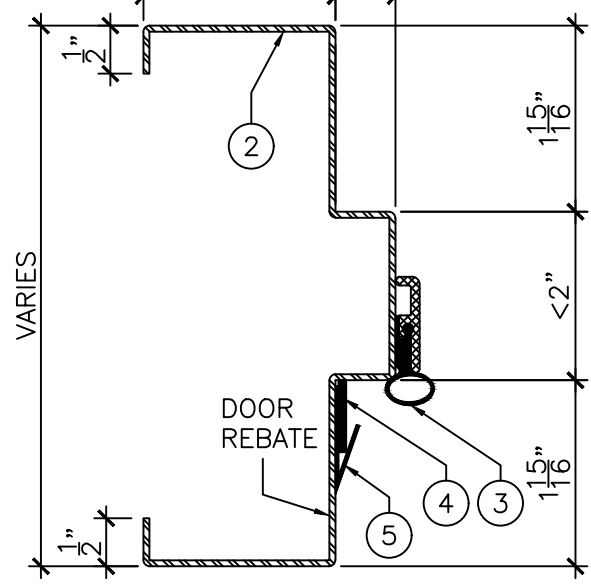


ELEVATION
 $\frac{3}{4}'' = 1'-0''$



DETAIL "A"
 $\frac{6''}{2} = 1'-0''$



DETAIL "B"
 $\frac{6''}{2} = 1'-0''$

LEGEND:

1. 1/4" HIGH ACOUSTIC THRESHOLD.
2. PRESSED STEEL ACOUSTIC FRAME INSTALLED AT TOP LEVEL OF FINISHED FLOOR COVERING MATERIAL. (DO NOT EMBED IN FLOOR FINISHING).
3. ACOUSTIC PERIMETER SEALS TO BE FITTED AND FASTENED TO JAMBS AND HEAD BY INSTALLER ON SITE. ACOUSTIC SEALS DIMINISH THE FRAME CLEAR OPENING SIZE AS FOLLOWS:
 - REBATE WIDTH LESS 2 1/2" (64mm)
 - REBATE HEIGHT LESS 1 1/4" (32mm).
4. ACOUSTIC NEOPRENE (SHIPPED LOOSE).
5. BRONZE SEAL.
6. ACOUSTIC ABSORPTION CHAMBER.



DRAWING TITLE:
ACOUSTIC STEEL PAIRED FRAME AND PERIMETER SEALS FOR WOOD DOORS
STC 50 TO STC 52

DATE:	OCTOBER 17, 2016
DRAWN BY:	TWB
REVISION:	0