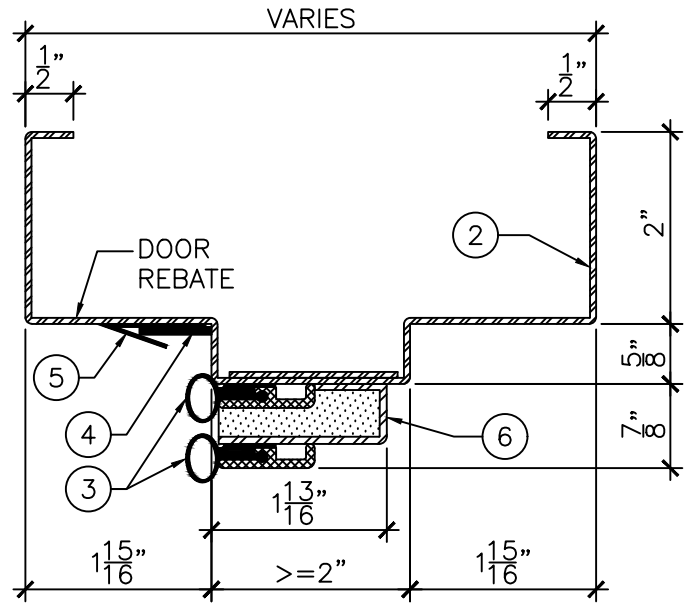
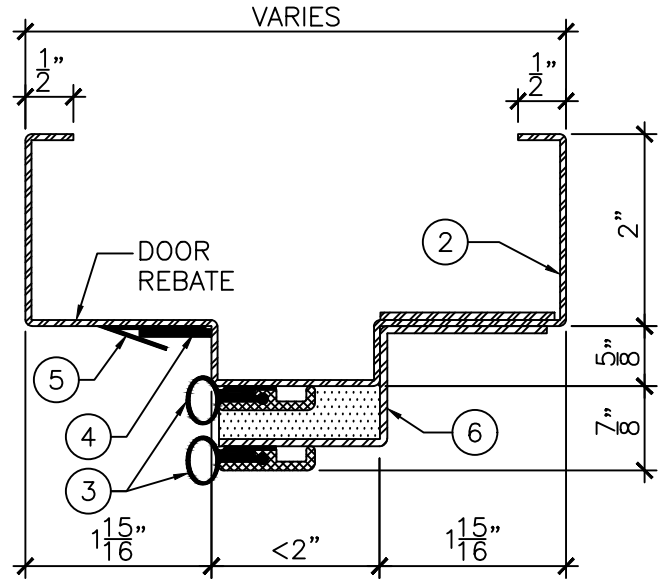


ELEVATION
 $\frac{3}{4}'' = 1'-0''$



DETAIL "A" - 2" SOFFIT OR MORE
 $\frac{6}{6}'' = 1'-0''$



DETAIL "A" - LESS THAN 2" SOFFIT
 $\frac{6}{6}'' = 1'-0''$

LEGEND:

1. 1/4" HIGH ACOUSTIC THRESHOLD.
2. PRESSED STEEL ACOUSTIC FRAME TO BE PREPARED FOR 1 PR CAM-LIFT HINGES AND INSTALLED AT TOP LEVEL OF FINISHED FLOOR COVERING MATERIAL. (DO NOT EMBED IN FLOOR FINISHING).
3. ACOUSTIC PERIMETER SEALS TO BE FITTED AND FASTENED TO JAMBS AND HEAD BY INSTALLER ON SITE. ACOUSTIC SEALS DIMINISH THE FRAME CLEAR OPENING SIZE AS FOLLOWS:
 - REBATE WIDTH LESS 2 1/2" (64mm)
 - REBATE HEIGHT LESS 1 1/4" (32mm).
4. ACOUSTIC NEOPRENE (SHIPPED LOOSE).
5. BRONZE SEAL.
6. ACOUSTIC ABSORPTION CHAMBER.

NOTES:

- DOORS TO BE PREPARED FOR CAMLIFT HINGES. HINGES SUPPLIED LOOSE BY AMBICO.
- MINIMUM LOCK BACKSET REQUIRED OF 3 3/4".



DRAWING TITLE:
ACOUSTIC STEEL PAIRED FRAME AND PERIMETER SEALS FOR WOOD DOORS
STC 53

DATE: OCTOBER 17, 2016
 DRAWN BY: TWB
 REVISION: 0