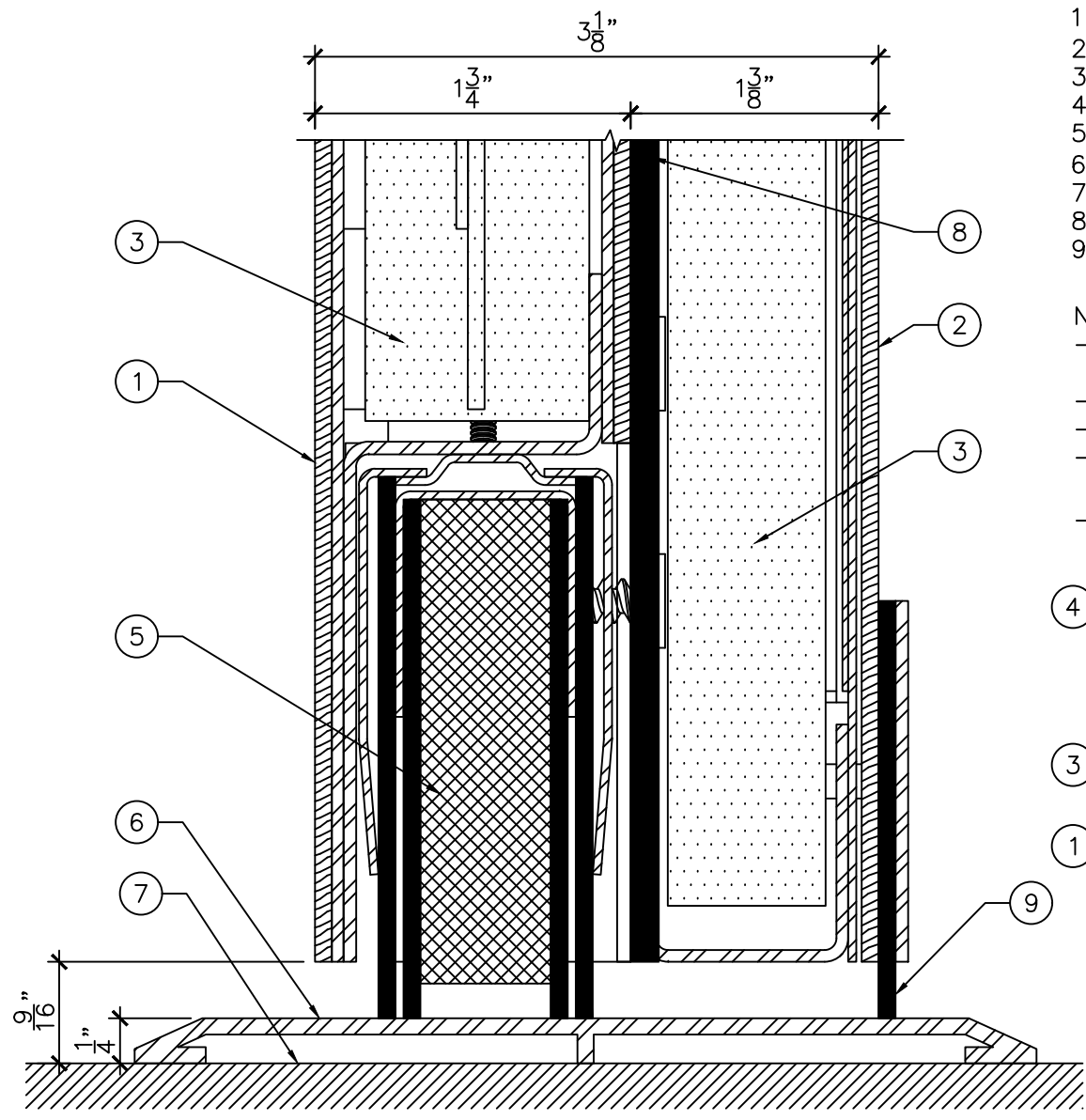
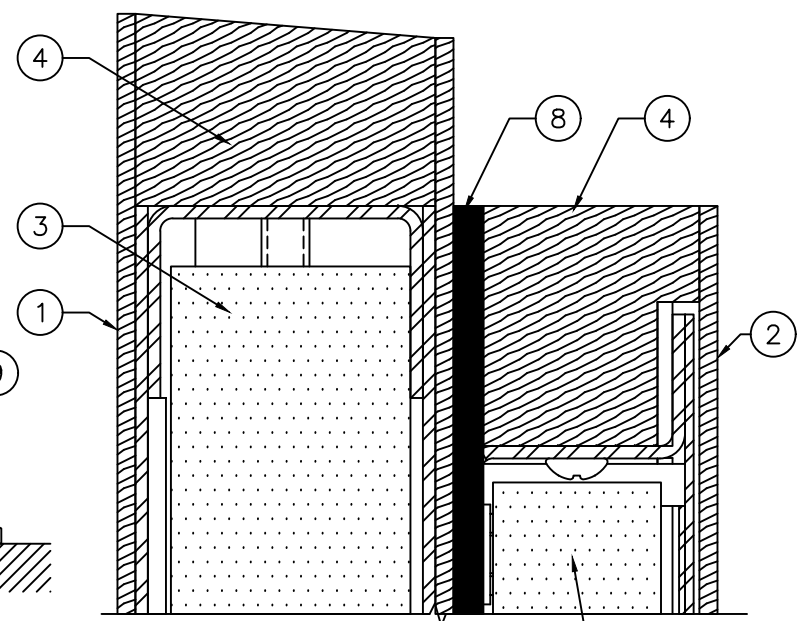


ELEVATION
3/4" = 1'-0"



BOTTOM DETAIL "A"
1"-0" = 1'-0"



TOP DETAIL "B"
1"-0" = 1'-0"

LEGEND:

1. WOOD FACE VENEER (PULL SIDE) TO BE: --
2. WOOD FACE VENEER (PUSH SIDE) TO BE: --
3. ACOUSTIC CORE.
4. HARDWOOD STILES AND RAILS.
5. ACOUSTIC MORTISED FIXED DOOR BOTTOM.
6. 1/4" HIGH X 5" WIDE ACOUSTIC THRESHOLD.
7. FINISHED FLOOR COVERING MATERIAL.
8. ACOUSTIC BARRIER.
9. ACOUSTIC SURFACE APPLIED SWEEP.

NOTES:

- DOORS INCLUDE FACTORY PRE-MACHINING FOR HARDWARE.
- DOORS INCLUDE FACTORY SEALING OF EDGES.
- FACTORY PRE-FINISHING TO BE: --.
- DOOR PREPARED FOR CAM-LIFT HINGES (SUPPLIED LOOSE BY AMBICO).
- APPROXIMATE DOOR WEIGHT IS 23 lb/sq.ft.



DRAWING TITLE:
**WOOD CLAD ACOUSTIC DOOR - NON FIRE RATED
STC 54**

DATE:	OCTOBER 17, 2016
DRAWN BY:	TWB
REVISION:	0