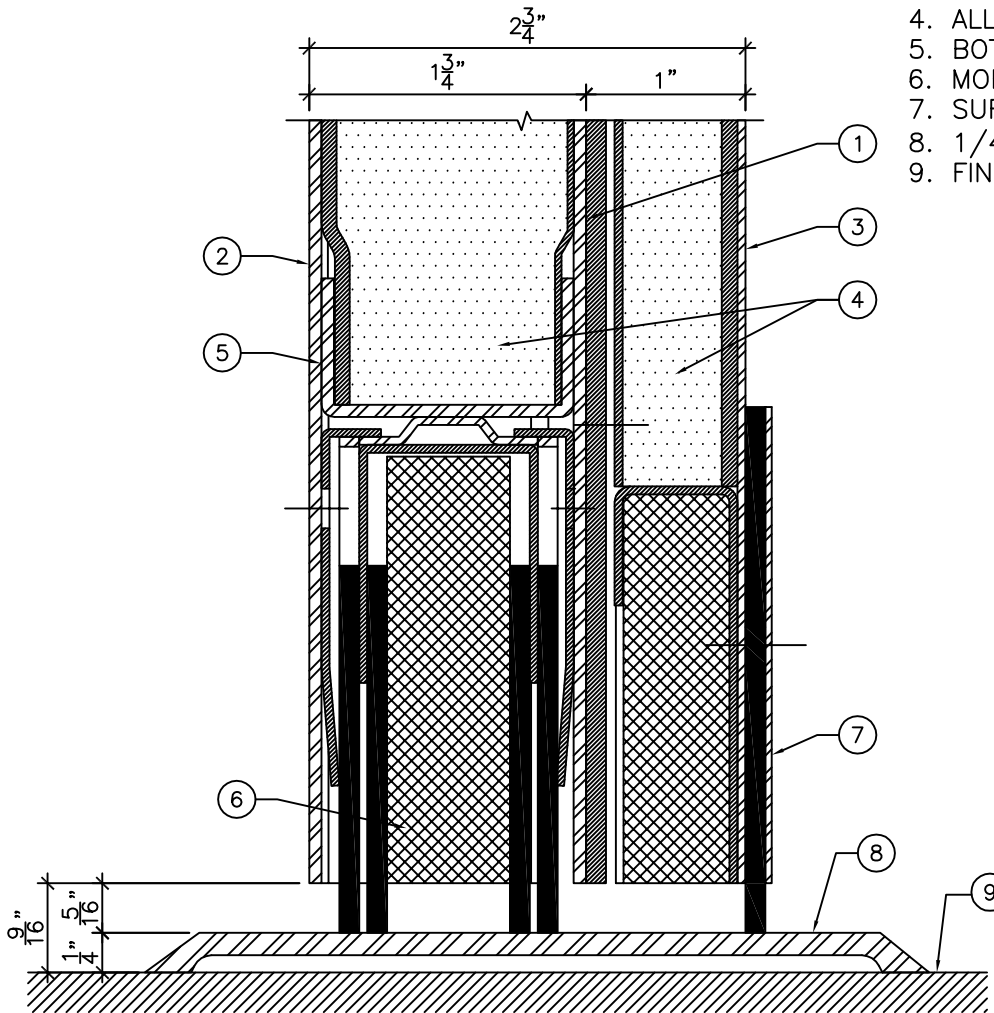


ELEVATION

3/4" = 1'-0"



BOTTOM DETAIL "A"

1"-0" = 1"-0"

LEGEND:

1. BACK SKIN.
2. FRONT SKIN.
3. ACOUSTIC PANEL.
4. ALL VOIDS FILLED WITH SOUND DEADENER.
5. BOTTOM CHANNEL.
6. MORTISED FIXED DOOR BOTTOM SEAL.
7. SURFACE SWEEP SEAL.
8. 1/4" HIGH FLAT THRESHOLD.
9. FINISHED FLOOR COVERING MATERIAL.

NOTES:

- 1" THK. BACK PANEL IS INSET BY 1" AT THE TOP AND TWO SIDES FROM THE EDGES OF THE 1 3/4" THK. BASE DOOR.
- DOORS TO BE PREPARED FOR CAMLIFT HINGES. HINGES SUPPLIED LOOSE BY AMBICO.
- MINIMUM LOCK BACKSET REQUIRED OF 3 3/4".



DRAWING TITLE:

**ACOUSTIC STEEL DOOR AND DOOR BOTTOM
STC 56-59 PAIRS AND STC 57-59 SINGLES**

DATE: OCTOBER 17, 2016

DRAWN BY: TWB

REVISION: 0