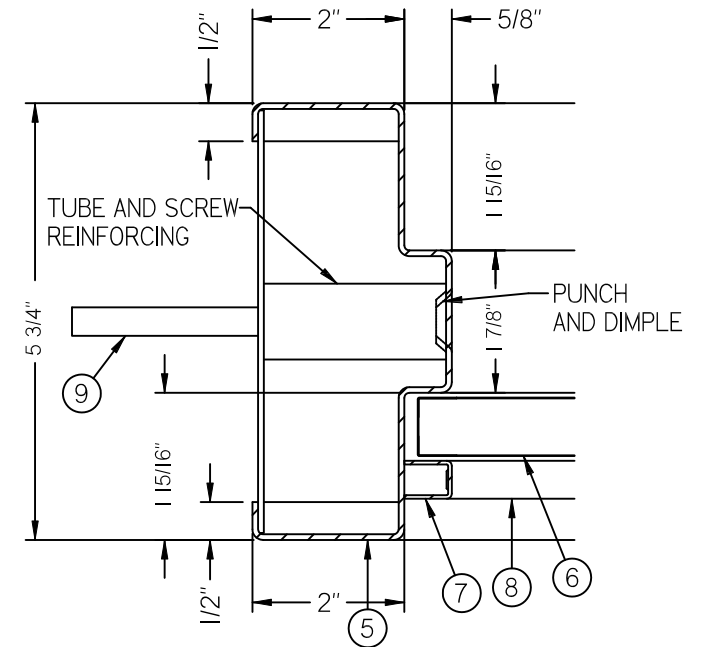
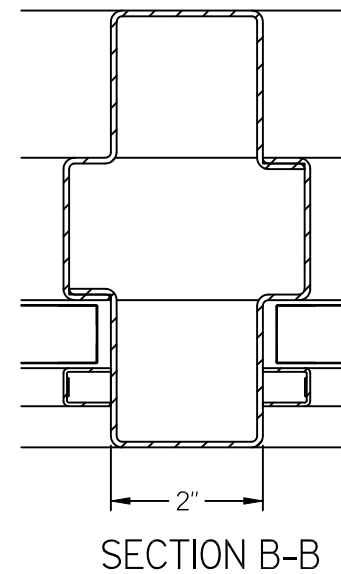
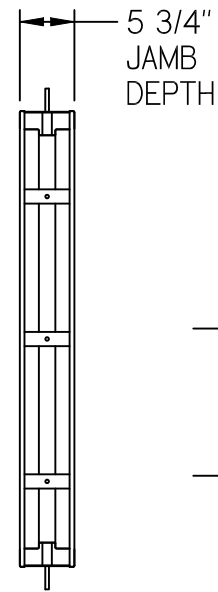
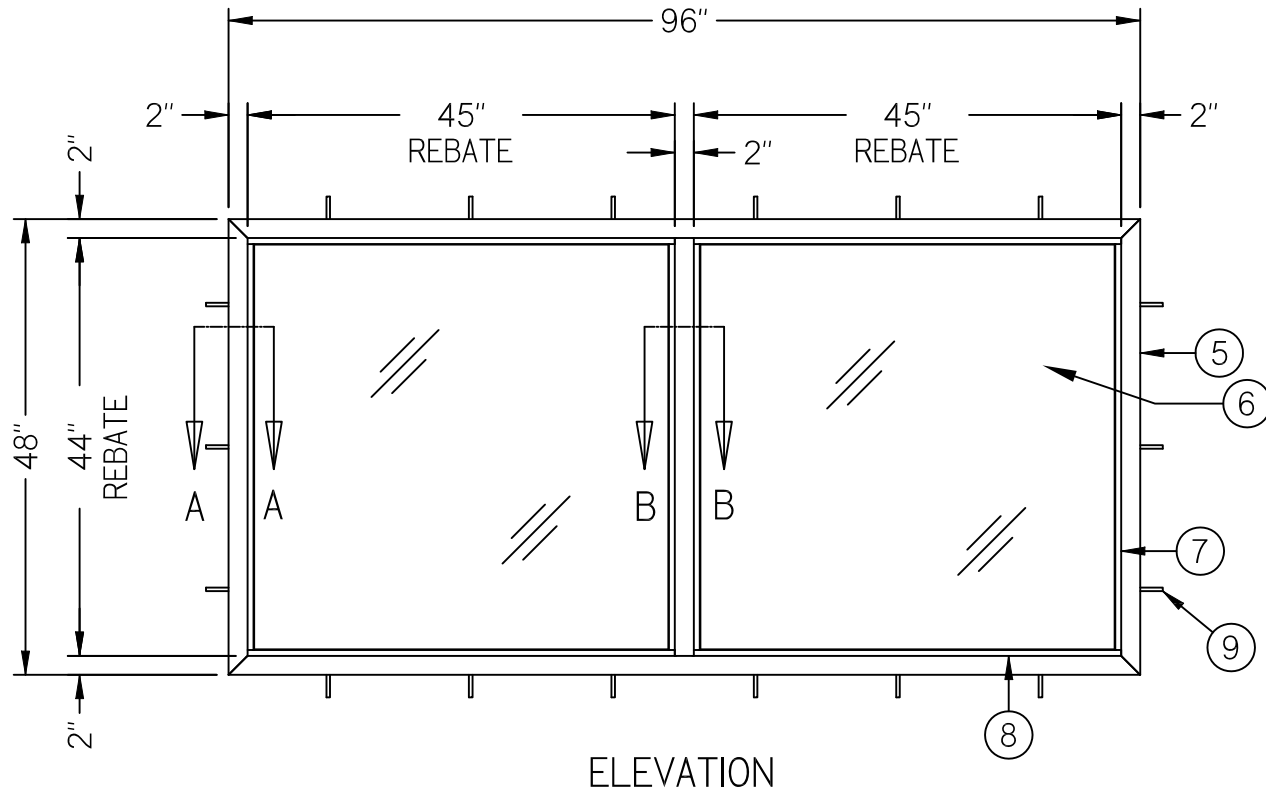


NOTES:

1. BLAST RESISTANT PRESSURE LEVELS SHALL BE DETERMINED BY OVERALL WINDOW SIZE & PROJECT REQUIREMENTS.
2. ARCHITECT AND/OR CONTRACTOR TO ENSURE WALL CAN RESIST APPLIED LOADING.
3. GLAZING TYPE AND THICKNESS DEPENDS ON WINDOW DIMENSIONS AND BLAST LOADING.
4. QUANTITY OF ANCHORS DEPENDS ON WALL CONSTRUCTION AND BLAST LOADING.



Item No.	Title
5	Blast-Resistant Borrowed Lite Frame
6	Blast-Resistant Glazing
7	Removable Vertical Glazing Bead
8	Removable Horizontal Glazing Bead
9	Machine Screw or Concrete Anchor