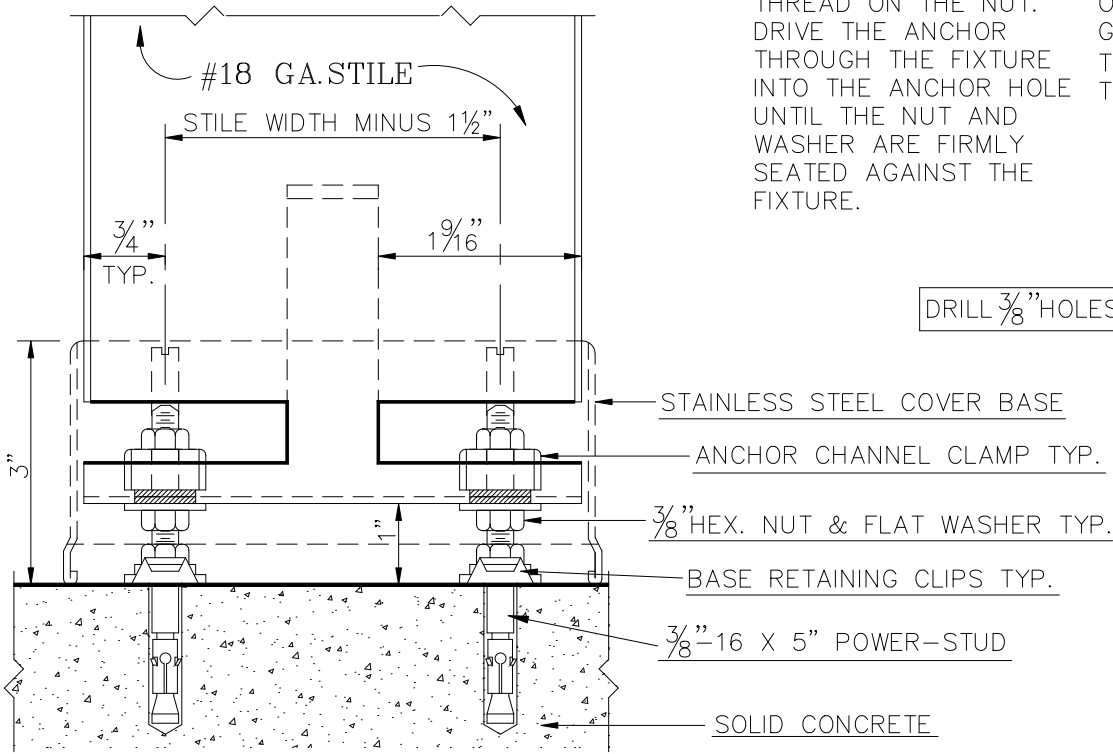


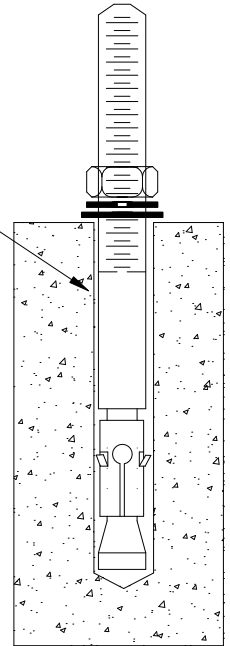
BLOW HOLE CLEAN OF DUST AND OTHER MATERIAL. DO NOT EXPAND THE ANCHOR PRIOR TO INSTALLATION

POSITION THE WASHER AND LOCK WASHER ON THE ANCHOR AND THREAD ON THE NUT. DRIVE THE ANCHOR THROUGH THE FIXTURE INTO THE ANCHOR HOLE UNTIL THE NUT AND WASHER ARE FIRMLY SEATED AGAINST THE FIXTURE.

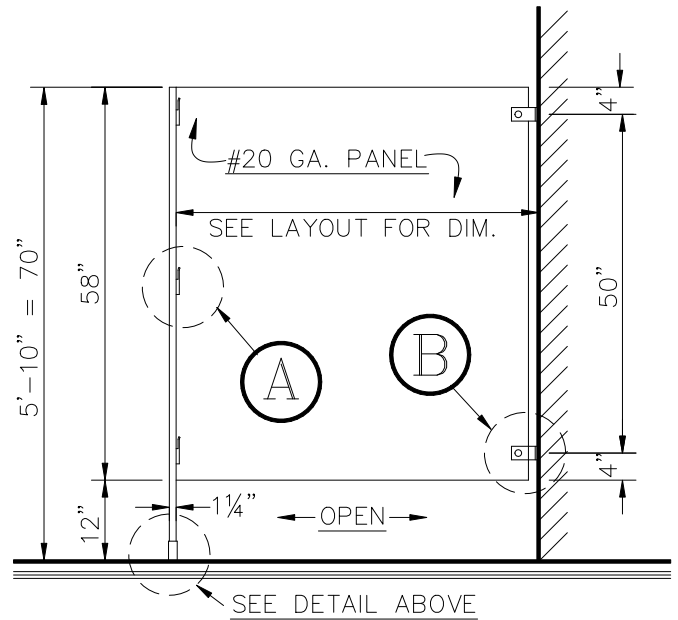
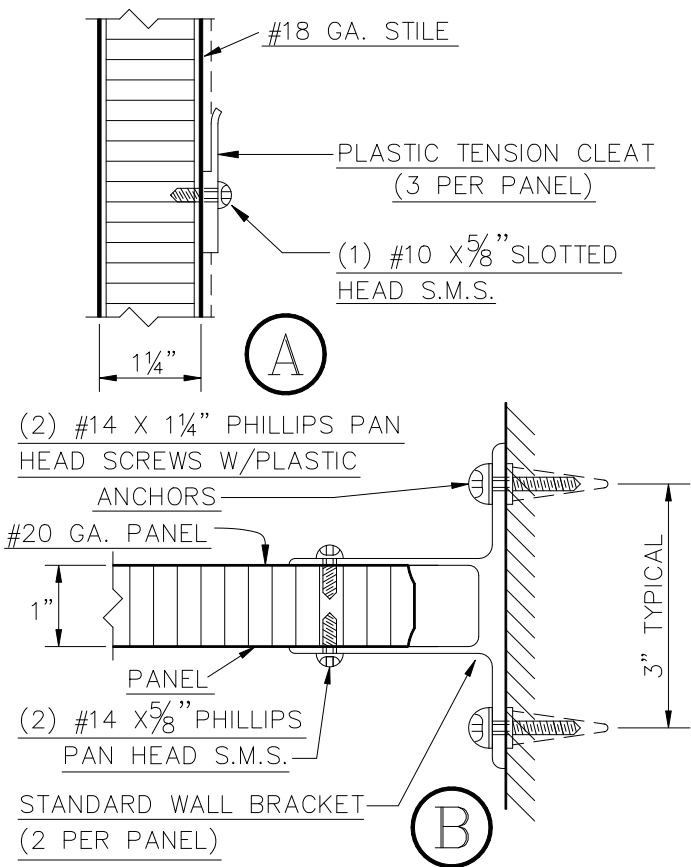
TIGHTEN THE ANCHOR BY TURNING THE NUT 3 TO 5 TURNS PAST FINGER TIGHT OR BY APPLYING THE GUIDE INSTALLATION TORQUE (20ft.lbs.) FROM THE FINGER TIGHT POSITION



DRILL $\frac{3}{8}$ " HOLES



TYPE B.E. - F.S. STILE FASTENING ASSEMBLY



TYPE B.E. - F.S. STILE & PANEL INSTALLATION