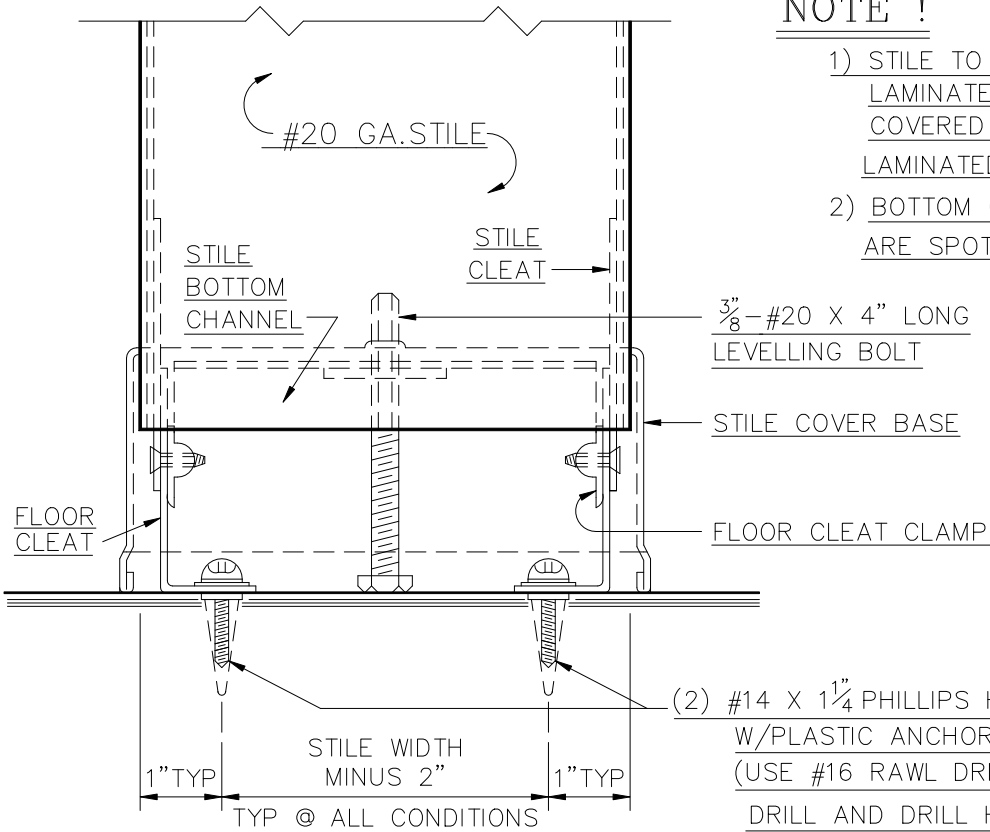
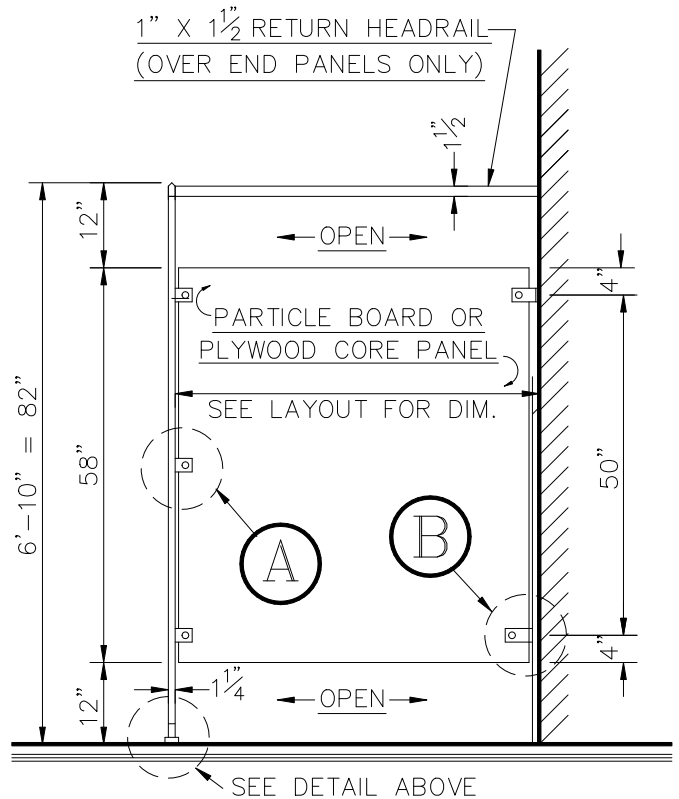
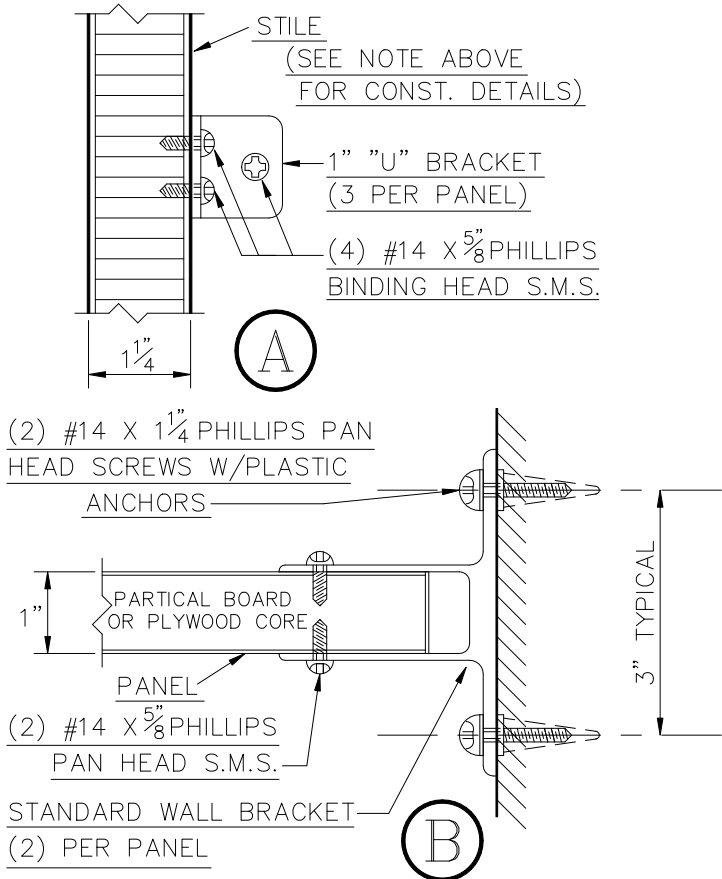


NOTE !

- 1) STILE TO BE OF VENEER STEEL CONSTRUCTION LAMINATED TO A HONEYCOMB CORE AND COVERED EXTERNALLY W/HIGH PRESSURE LAMINATED PLASTIC.
- 2) BOTTOM CHANNEL AND STILE CLEATS ARE SPOT WELDED IN PLACE.



TYPE P.L. - F.F. STILE FASTENING ASSEMBLY



TYPE P.L. - F.F. STILE & PANEL INSTALLATION