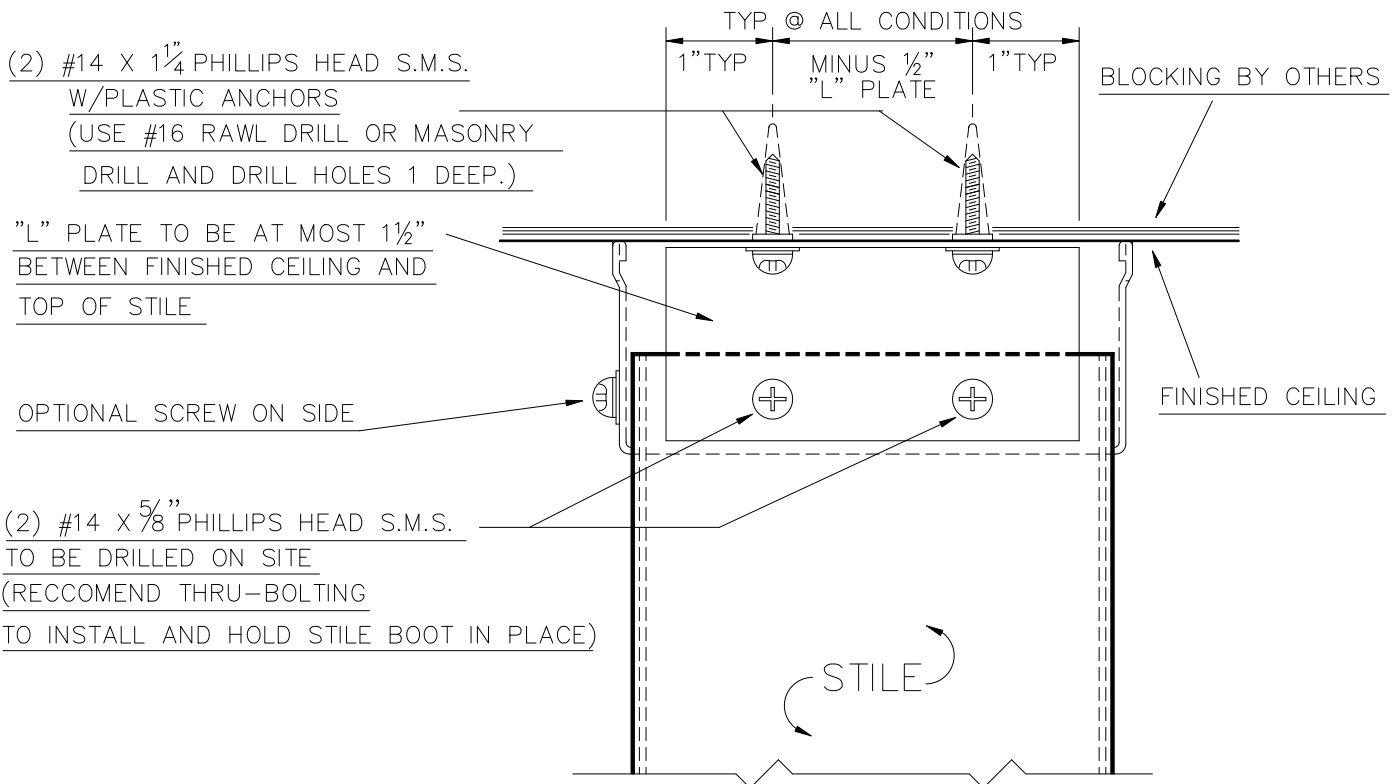


**NOTE !**

- 1) STILE TO BE OF VENEER #20 GA. STEEL CONSTRUCTION, LAMINATED TO A HONEYCOMB CORE AND COVERED EXTERNALLY W/HIGH PRESSURE LAMINATED PLASTIC.
- 2) BOTTOM CHANNEL AND STILE CLEATS ARE SPOT WELDED IN PLACE.

TYPE P.L. - FLR/CLG. FLOOR FASTENING ASSEMBLY



TYPE P.L. - FLR./CLG. CELING FASTENING INSTALLATION