





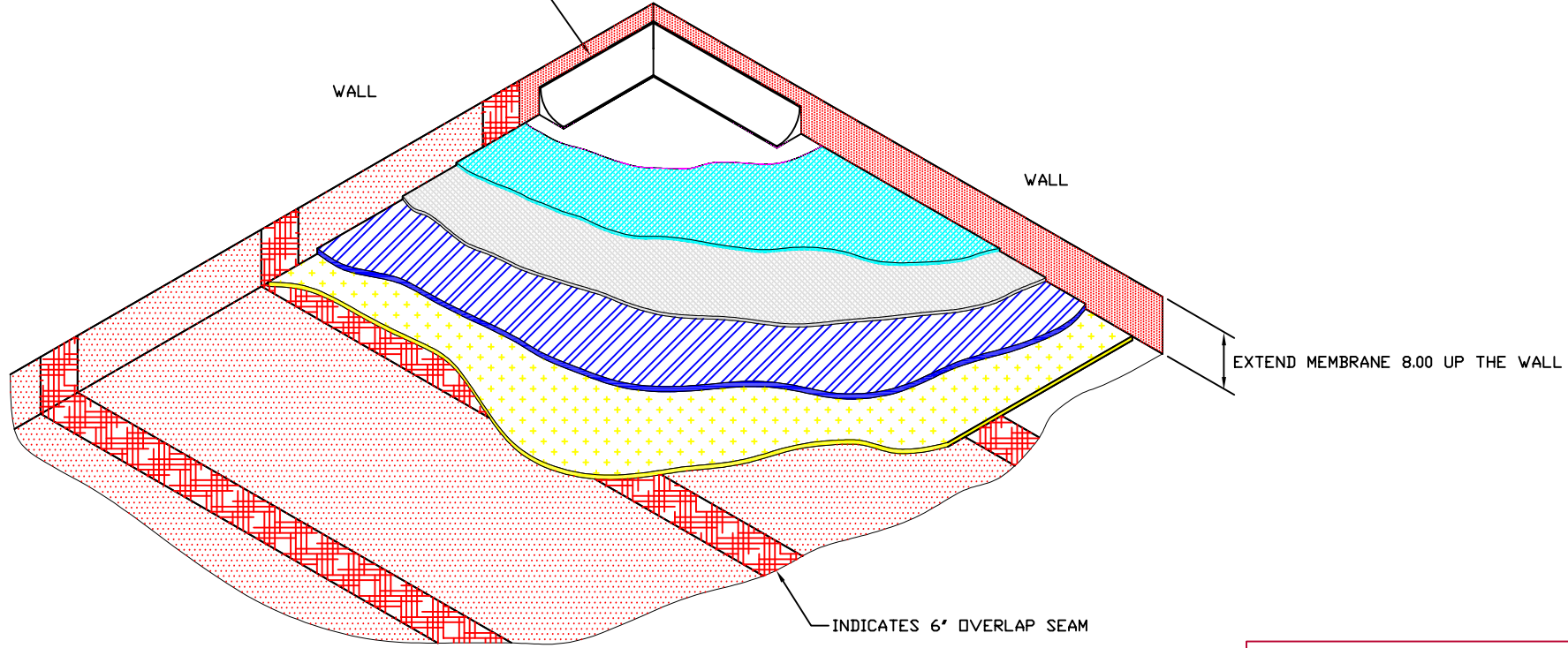


H | G | F | E | D | C | B | A

NOTES:

- * OVERALL FLOOR THICKNESS DEPENDS ON WHAT SURFACE IS USED.
-  CHOICE OF VINYL PERFORMANCE SURFACE: HARLEQUINS CASCADE .080", STUDIO .120", STANDFAST .340", FIESTA .080
-  TOP PANEL, SUB-SURFACE: SEMI-FLEXIBLE, 9mm, HARLEQUIN MOISTURE RESISTANT LOAD DISTRIBUTION PANELS.
-  LOWER PANEL, SUB-SURFACE: SEMI-FLEXIBLE, 12mm, HARLEQUIN MOISTURE RESISTANT LOAD DISTRIBUTION PANELS.
-  PROGRESSIVE RESISTANCE SUSPENSION LAYER: SYNTHETIC, OPEN CELL, CELLULAR URETHANE, .75", DENSITY: PROPRIETARY.
-  PROGRESSIVE RESISTANCE SUSPENSION LAYER: SYNTHETIC, OPEN CELL, CELLULAR URETHANE, .50", DENSITY: PROPRIETARY.
-  DAMP-PROOF MEMBRANE 6 MIL POLYETHYLENE.

EDGE: TRIM, SKIRTING PROFILE: "P" RUBBER/POLYURETHANE COMPOSITE EXTRUSION 4" HIGH WITH 1" TOE, BLACK.



ISOMETRIC CUTAWAY VIEW OF FLOOR

EXTEND MEMBRANE 8.00 UP THE WALL

INDICATES 6" OVERLAP SEAM

AMERICAN HARLEQUIN CORPORATION
 1531 GLEN AVENUE
 MOORESTOWN, NJ 08057
 856-234-5505 FAX: 856-231-4403
 dance@harlequinfloors.com
 www.harlequinfloors.com

DRAWING TITLE: ACTIVITY PERMANENT FLOOR		
DRAWING NUMBER: C-201	SCALE: 12"=1'-0"	REV. 0

1
2
3
4
5
6
7
8