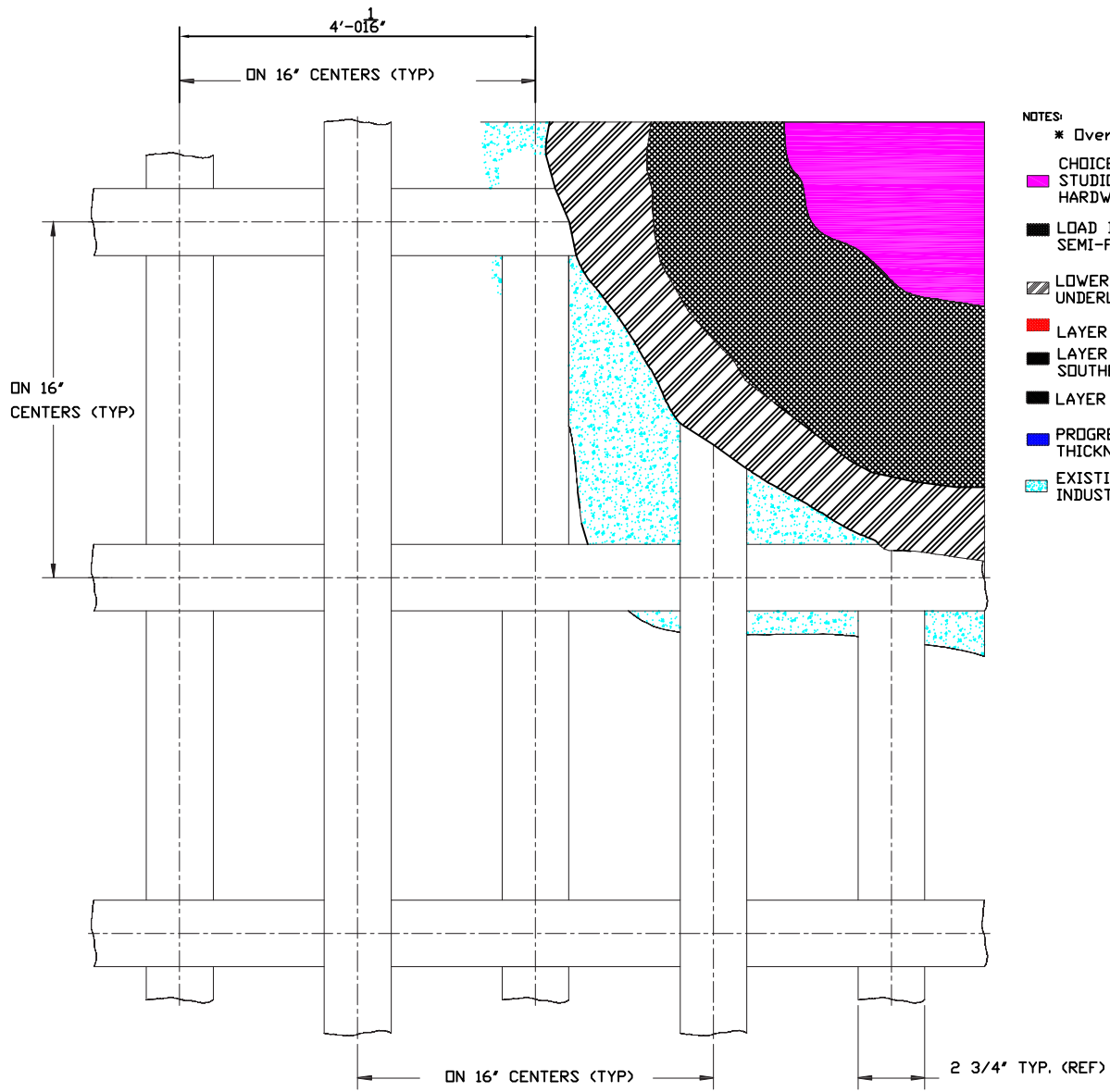
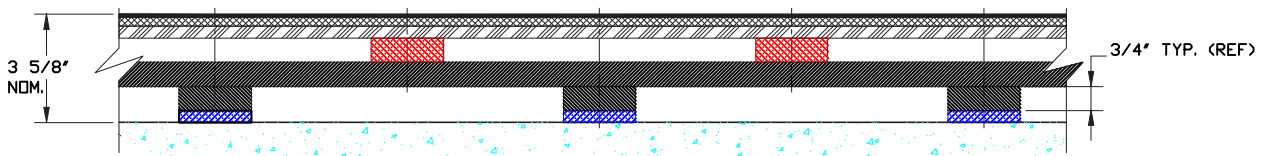


H | G | F | E | D | C | B | A



- NOTES:
- * Overall Floor Thickness Depends on What Surface is Used.
 - CHOICE OF VINYL PERFORMANCE SURFACE HARLEQUIN CASCADE .080", STUDIO 120, STANDFAST.120, FIESTA .080" STUDIO B. 120", HARDWOOD .75"
 - LOAD DISTRIBUTION PANELS. TOP PANEL SUB-SURFACE SEMI-FLEXIBLE, .375, MOISTURE RESISTANT
 - LOWER PANEL SUB-SURFACE SEMI-FLEXIBLE, .50. FLOORING GRADE UNDERLAYMENT PANELS
 - LAYER THREE WEAVE STRINGERS, 1X3 CLEAR SOUTHERN PINE
 - LAYER TWO WEAVE STRINGERS, 1X3 CLEAR SOUTHERN YELLOW PINE
 - LAYER ONE WEAVE STRINGERS, 1X3 CLEAR SOUTHERN YELLOW PINE
 - PROGRESSIVE RESISTANCE SUSPENSION, RUBBER SUSPENSION PADS, THICKNESS .375" DENSITY PROPRIETARY
 - EXISTING SUB-FLOOR, CONCRETE SHALL BE CURED AND DRY TO INDUSTRY STANDARDS, WOOD FLOORS MUST BE STRUCTUALLY SOUND.



AMERICAN HARLEQUIN CORPORATION
 1531 GLEN AVENUE
 MOORESTOWN, NJ 08057
 856-234-5505 FAX: 856-231-4403
 contact@harlequinfloors.com
 www.harlequinfloors.com

DRAWING TITLE:
 HARLEQUIN WOODSPRING®

DRAWING NUMBER: C-203	SCALE 3"=1'-0"	REV. 0
--------------------------	-------------------	-----------

1
2
3
4
5
6
7
8