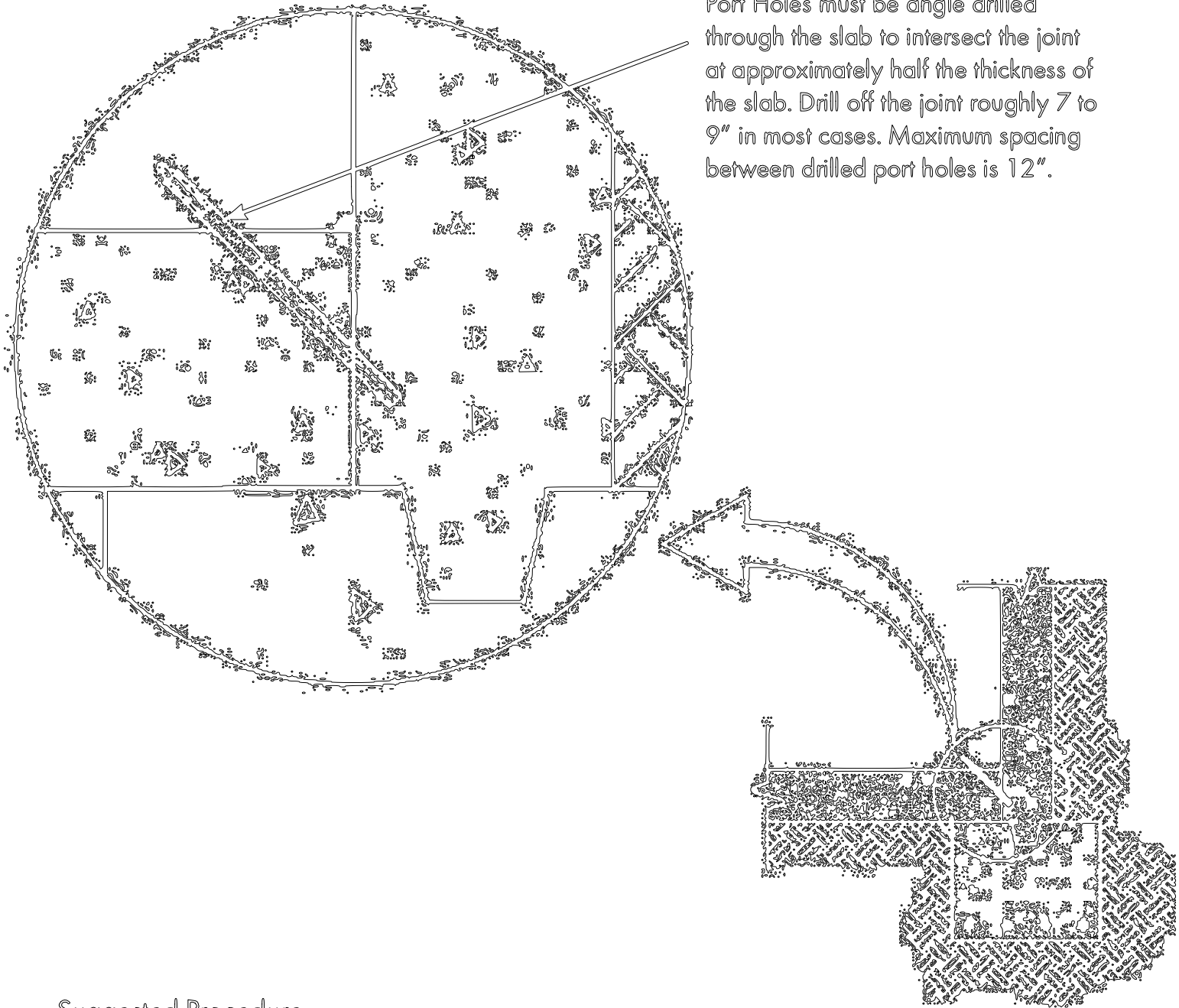


Grouting Floor to Wall Joints - Option 1



Port Holes must be angle drilled through the slab to intersect the joint at approximately half the thickness of the slab. Drill off the joint roughly 7 to 9" in most cases. Maximum spacing between drilled port holes is 12".

Suggested Procedure

1. At a minimum 45° angle drill 3/4 - 1/2" diameter drillholes through the concrete slab towards the joint. Holes should be a maximum of 9" off the joint and determined by slab thickness, midpoint intersection is desired.
2. Space drill holes maximum 12" apart. Spacing will vary depending on the joint width.
3. Insert appropriate sized packers into drill holes.
4. Pump potable water into each port to ensure moisture is present in joint for reactivity with grout.
5. Pump Aquafin InjectProECO-LV accelerated with InjectProECO-LV Accelerator under moderate pressure as required, taking into consideration the expansion factor of Aquafin InjectProECO-LV.
6. Watch for port to port travel to ensure full grout coverage.
7. Remove ports and repair drill holes using AQUAFIN-Plug, fast-setting patching mortar.