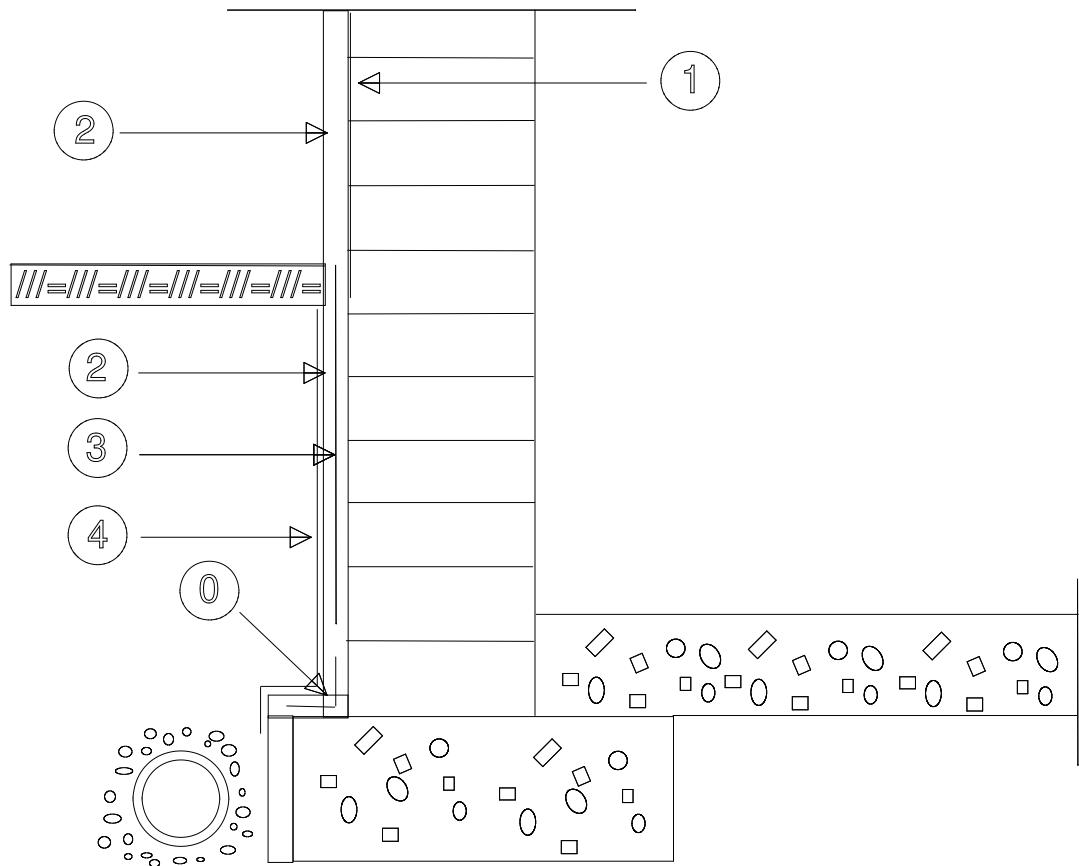




EXTERIOR WATERPROOFING OR BRICK WALLS

Schematic sketches



①

Seal porous surfaces and mortar joints with one scratch coat AQUAFIN-1K or approx. 60 mils (1/16") thickness [1.6 mm].

②

adhesion. Apply top coat with brush, roller, trowel or spraying. Smooth with a trowel if desired.

③

trowel. Cover with 2nd coat AQUAFIN-2K/M.

④

Install protection boards or drain mats before backfilling.

Note:

AQUAFIN-2K/M to 80 - 90 mils (2.0 - 2.25 mm).

Refer to product data sheet for further information.