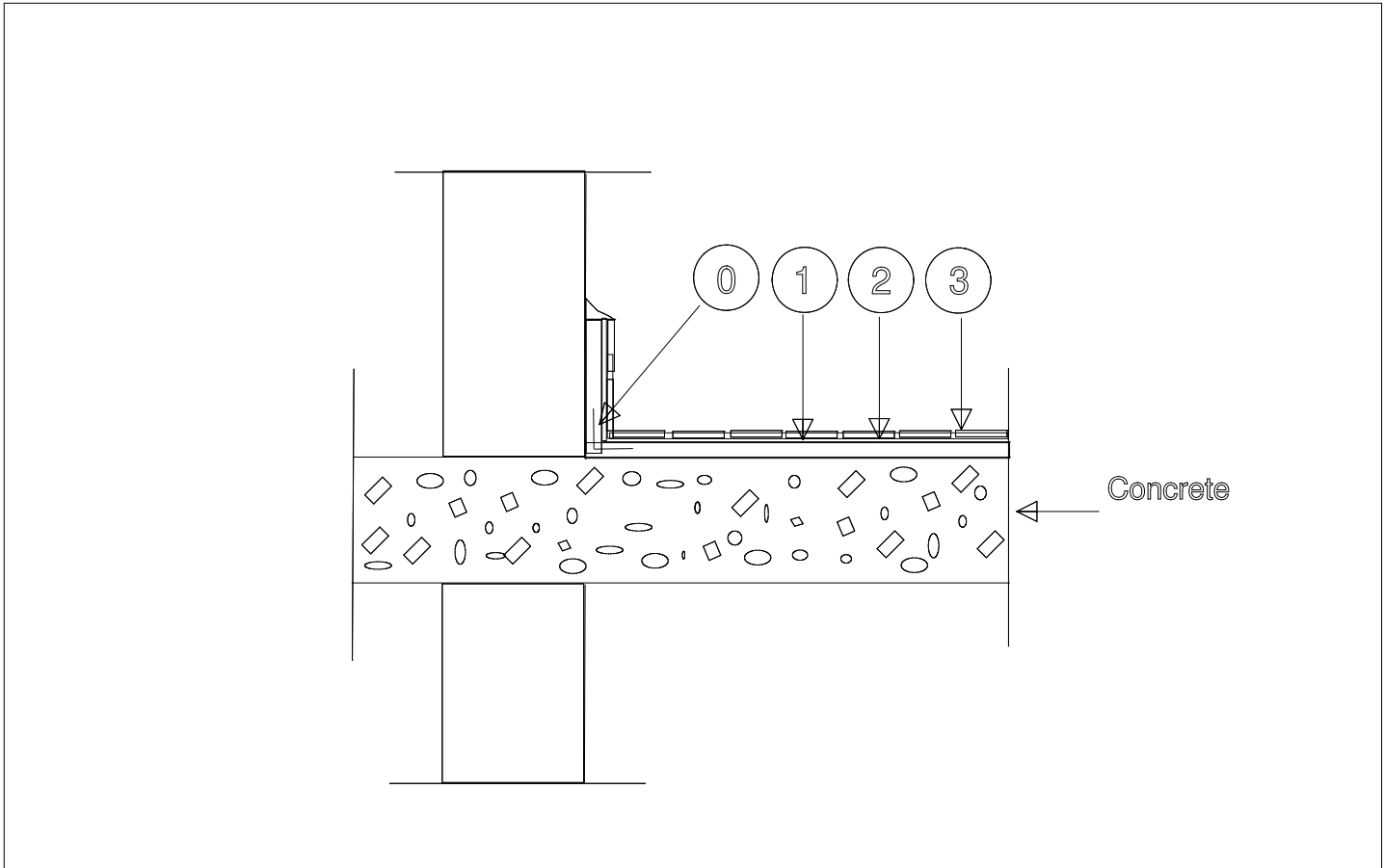




WATERPROOFING OF TILED BALCONY - AQUAFIN-2K/M Schematic sketches



- ① TAPE-2000-S to seal expansion joints. Refer to No. 1.1.3-15 for details.
 - ② Apply AQUAFIN-2K/M to slab and wall surfaces in 2 coats at a total thickness of 80 mils (2.0 mm).
 - ③ Apply flexible thin set tile mortar over AQUAFIN-2K/M.
 - ④ Install ceramic tile and tile grout as per tile manufacturer. Observe TCNA Guidelines for movement joint spacing.
- Note:
- in case of 24" x 24" pavers, set in a mortar bed of minimum 3/4" thickness in lieu of thin set tile mortar.
 -