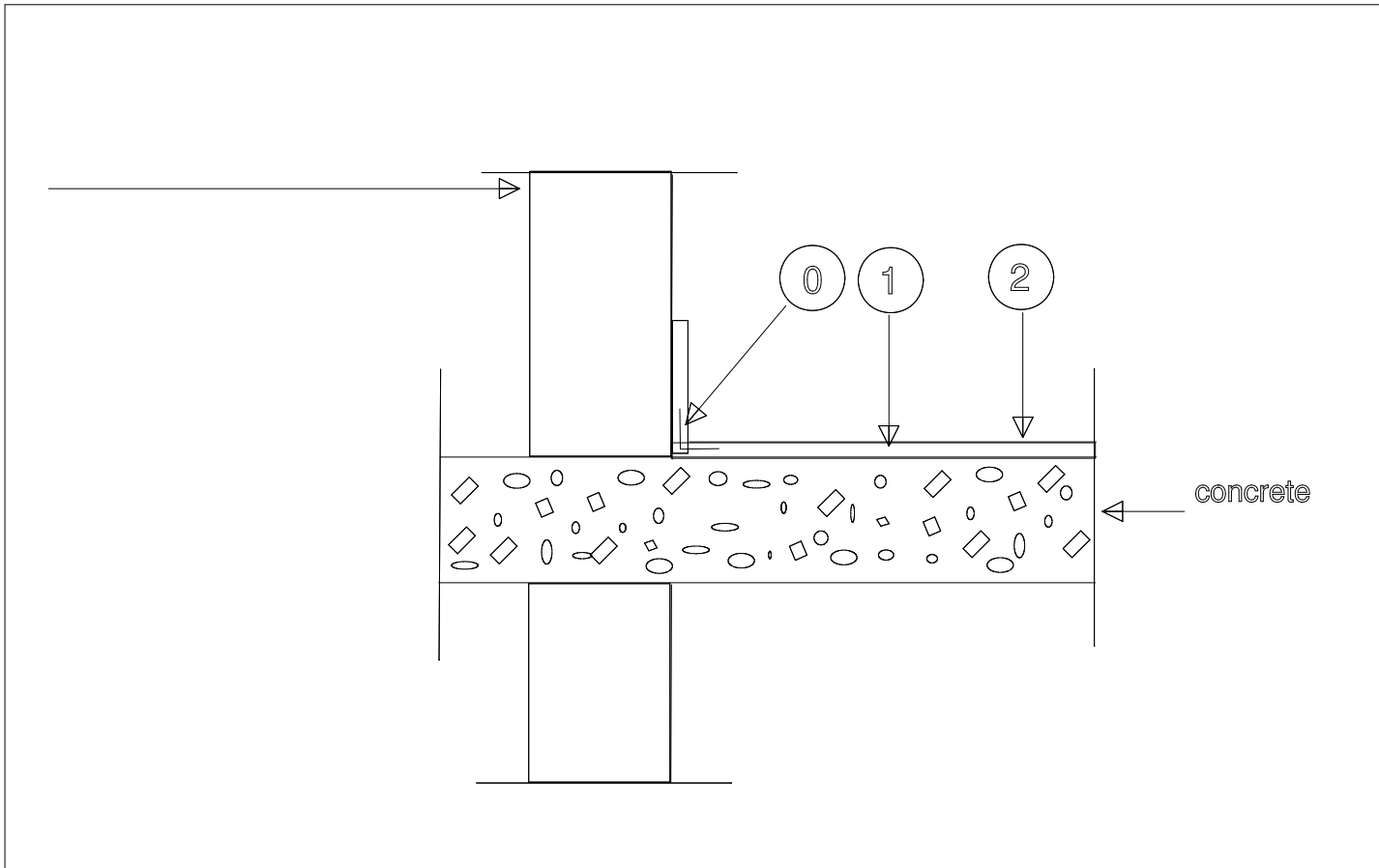


WATERPROOFING/PROTECTING OF NON-TILED BALCONY - AQUAFIN-2K/M
Schematic sketches



- ⑥ or CRACK SEALING TAPE, to seal wall/slab construction joint and JOINT SEALING TAPE-2000-S to seal expansion and movement joints and cracks. Refer to No. 1.1.3-15 for details.
- ① Apply AQUAFIN-2K/M to slab and wall surfaces in 2 coats at a total thickness of 1/16" [60 mils] (1.6 mm).
- ② existing color of 2K/M.

Note:
If necessary pitch to drain using MORTAR-LN, QUICK-Patch or MORTAR-Screed.