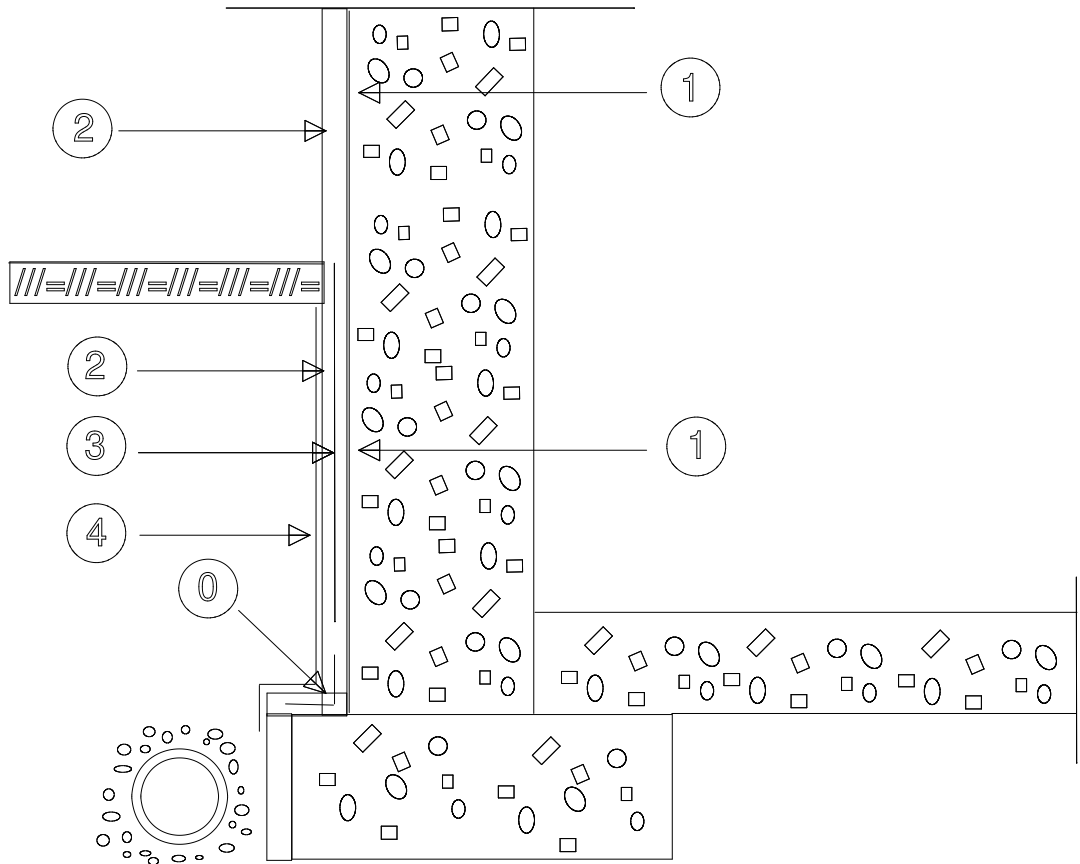




## EXTERIOR WATERPROOFING

## WALLS

Schematic sketches



①

adhesion. Apply top coat with brush, roller, trowel or spraying. Smooth with a trowel if desired.

③

AQUAFIN-2K/M. Contact Aquafin office for recommendations.

④

Install protection boards or drain mats before backfilling.

Note:

AQUAFIN-2K/M to 80 - 90 mils (2.0 - 2.25 mm).

Refer to product data sheet for further information.