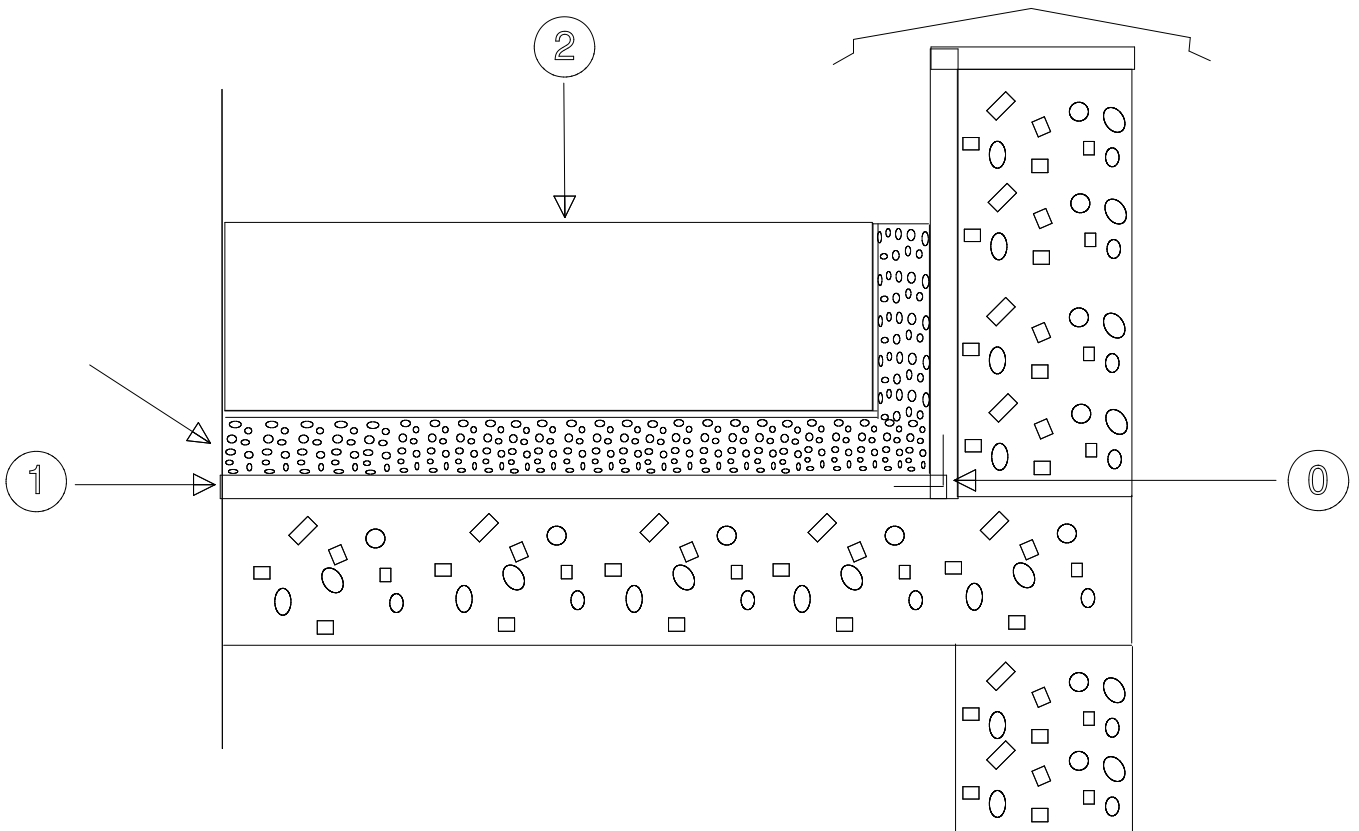




Schematic sketches



③

JOINT SEALING TAPE-2000-S at expansion joints and dynamic cracks. Refer to No. 1.1.3-15 for details.

①

Apply AQUAFIN-2K/M to walls and slab at 3/32" [90 mils] (2.4mm) in two coats by trowel or spray.

Install drain mat, root protection and planting system according to specifications.

Refer to product data sheet for further information.