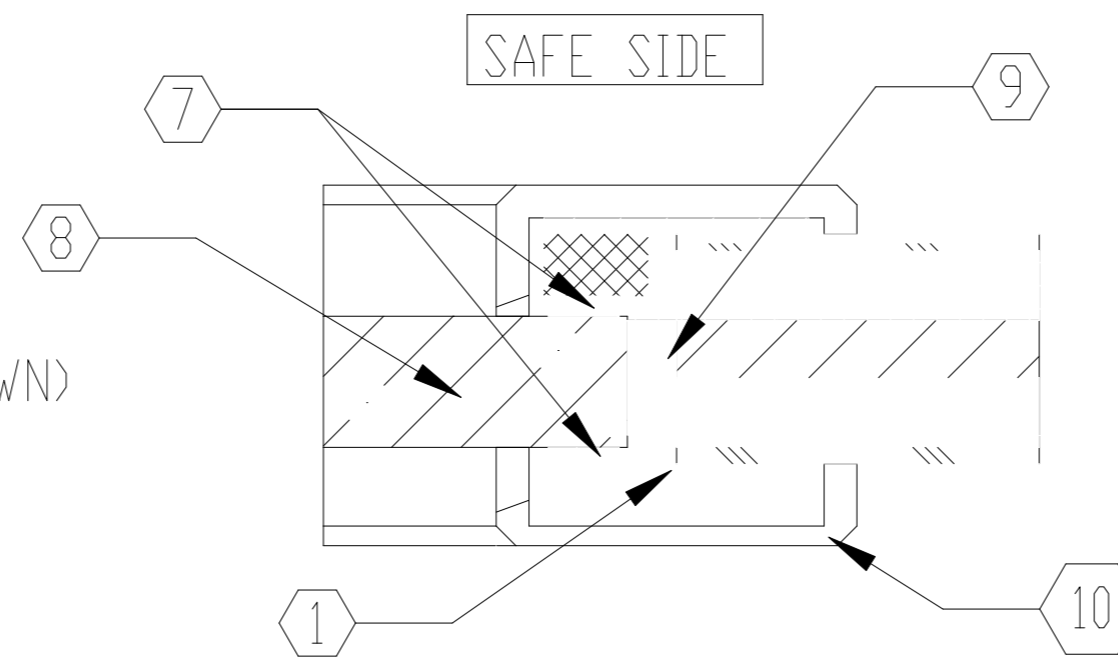


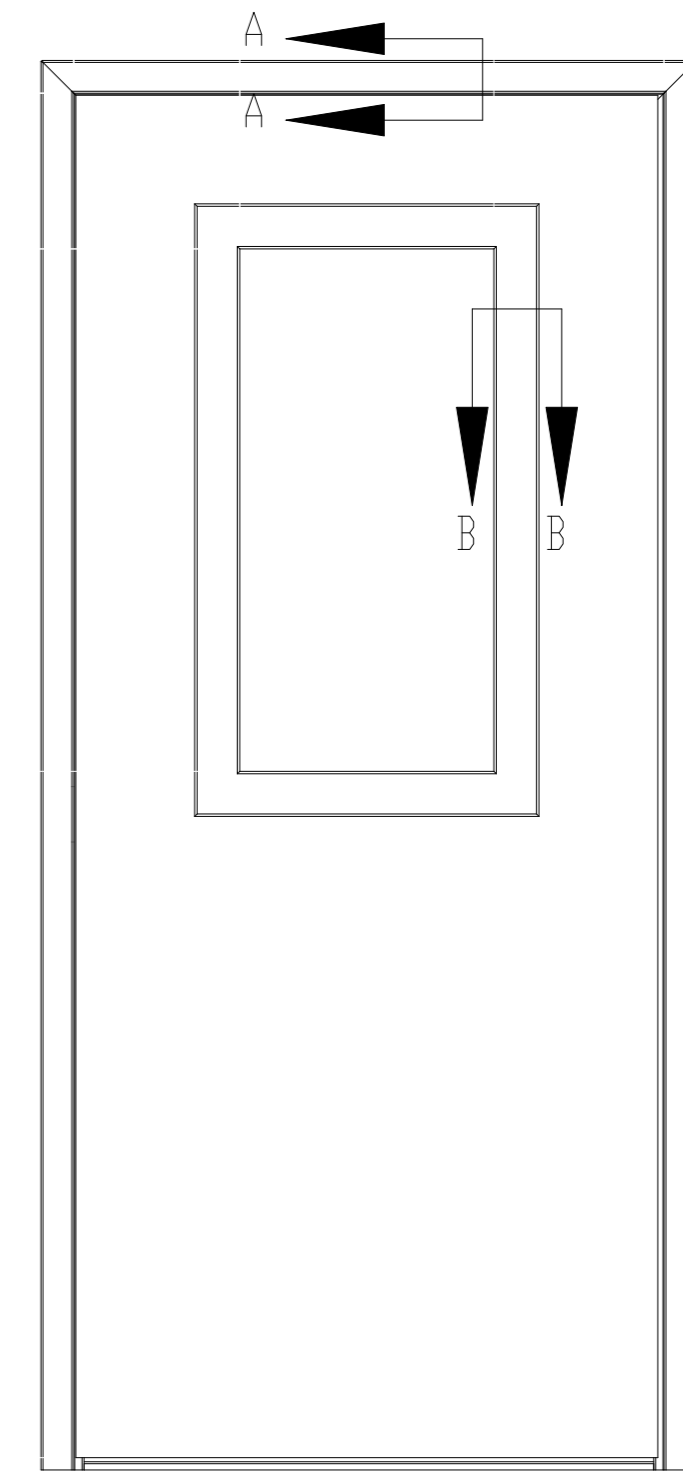
NOTES:

- ① ARMORTEX[®] BULLET RESISTANT ARMOR
- ② UNFINISHED VENEER
- ③ 16 GA. PRIME PAINTED STEEL FRAME
- ④ PARTICLE BOARD CORE
- ⑤ CONTINUOUS GEAR HINGE (NOT SHOWN)
- ⑥ HARDWARE PREPERATION AS REQUIRED (NOT SHOWN)
- ⑦ GLAZING TAPE
- ⑧ BULLET RESISTANT GLAZING
- ⑨ NEOPRENE SETTING BLOCK
- ⑩ WOOD TRIM

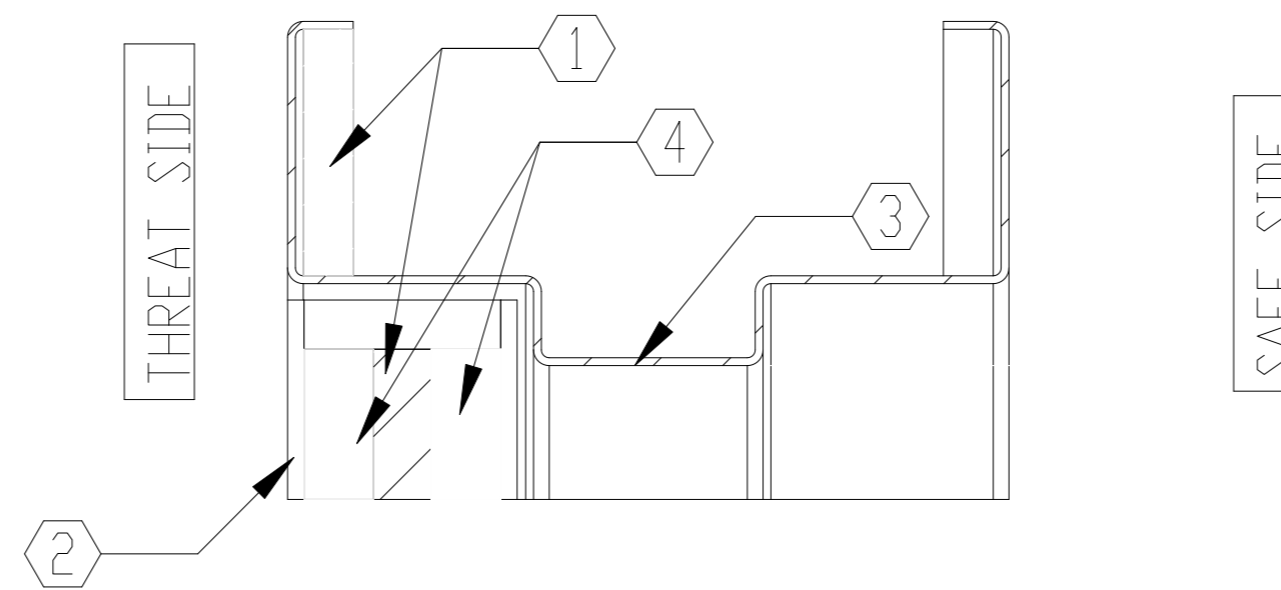
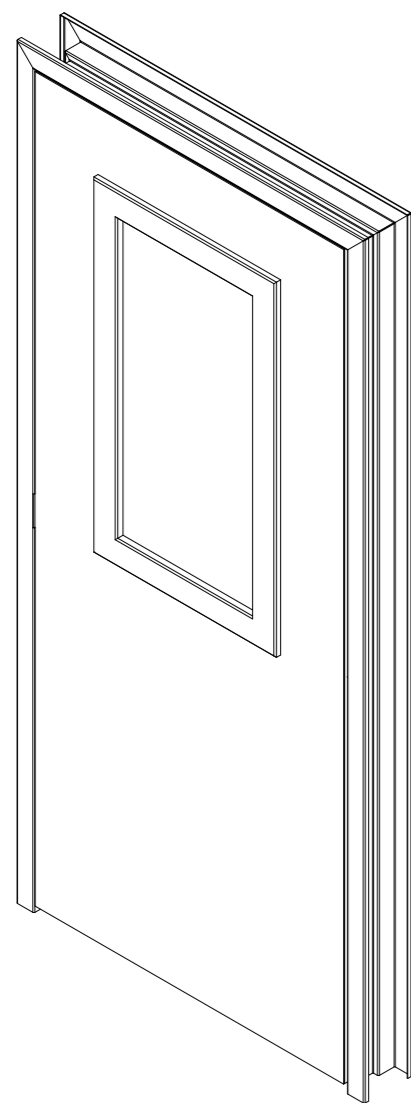


THREAT SIDE

SECTION B-B
SCALE 1 : 3



ELEVATION VIEW
SCALE 1:24



THREAT SIDE

SAFE SIDE

SECTION A-A
SCALE 1 : 3

UNLESS OTHERWISE SPECIFIED:

DIMENSIONS ARE IN INCHES
TOLERANCES:
FRACTIONAL ±1/16"
ANGULAR: ±1°
TWO PLACE DECIMAL ±.01
THREE PLACE DECIMAL ±.005

ARMORTEX[®]
BULLET • BLAST • FORCED ENTRY - PROTECTION PRODUCTS
5926 CORRIDOR PKWY SCHERTZ, TX 78154
TEL: 210-661-8306 800-880-8306 FAX: 210-661-8308
www.armortex.com