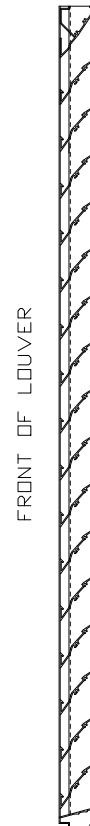


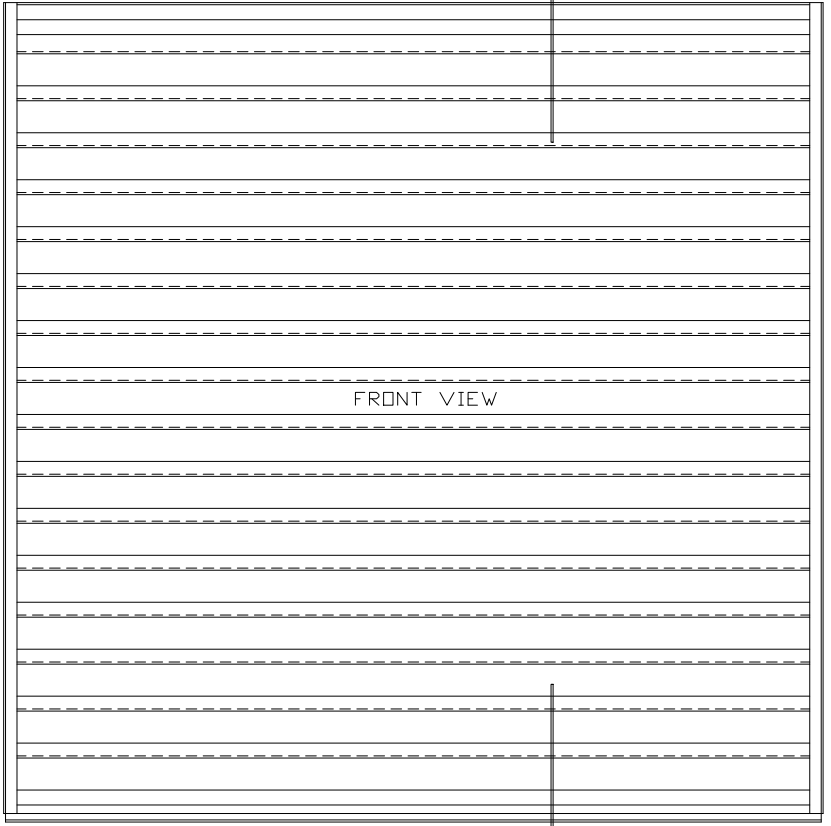
CHK	REVISION	DATE	APV/D
LTR			
A	SEE ECN 9303	3/9/09	MCT



TOP VIEW FRONT



SECTION A-A



FRONT VIEW



SIDE VIEW

ARROW LOUVER MODEL:
EA-215-D
SCALE: 1/4"=1'

SPECIFICATIONS

MATERIAL: EXTRUDED ALUMINUM 6063-T6/T52 ALLOY,
FRAME - .063" THK, BLADES - .063" THK.

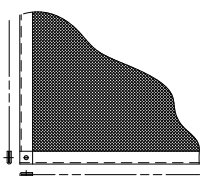
FACE OF LOUVER: FULL SILL, WITH BLADES, AND HEAD
CONTAINED IN JAMBS. APPROXIMATE
BLADE CENTERS 2 3/4".

SCREEN: (WHEN INDICATED)
BIRD SCREEN - 1/2" FLATTENED ALUMINUM .051" THK.
DR - 1/2" SQ. MESH INTERMEDIATE DOUBLE-
CRIMPED ALUMINUM WIRE .053" DIA.
DR - 18/16 MESH .011" DIA. ALUMINUM
WIRE INSECT SCREEN.

LOUVER PERFORMANCE STATEMENT

LOUVER MODEL EA-215-D SHALL BE FABRICATED TO PROVIDE
A MINIMUM OF (45%), 7.23 SQUARE FEET OF FREE AREA FOR
A 48" x 48" SIZE LOUVER AND BEAR THE AMCA CERTIFIED
RATINGS PROGRAM SEAL FOR AIR PERFORMANCE AND WATER
PENETRATION. THE RATING SHALL SHOW A BEGINNING
POINT OF WATER PENETRATION AT 01 DUNCES PER SQUARE
FOOT OF FREE AREA AT A FREE AREA VELOCITY OF 901
FEET PER MINUTE, (6514) CUBIC FEET PER MINUTE, WITH
.110 INCHES WATER GAUGE PRESSURE DROP FOR AIR INTAKE.

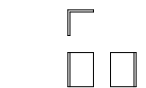
LOUVER ACCESSORIES



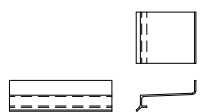
SCREEN



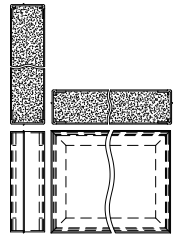
ADD-ON FLANGE



ANGLE MTG CLIP



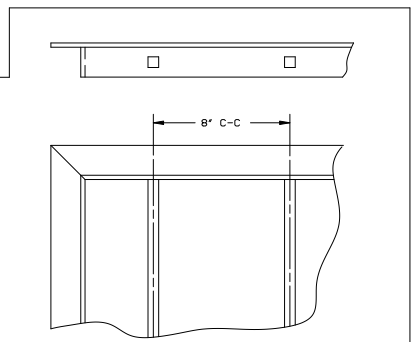
SILL EXTENSION



INSULATED BLANK-OFF



T-BAR



SECURITY BARS

		ARROW UNITED INDUSTRIES A Division of Mestek, Inc. 314 Riverside Drive - P.O. Box 69 - Wyalusing, PA 18853 AGENT:	
		MODEL EA-215-D LOUVER	
CUST.		PROJECT	
CONTR.		BIMS	
ARCH.		DWN. MCT DATE 1/26/09	
P.O.		ARROW JOB NO. E-2000	DWG. NO. 39249
DWN. MCT	DATE 1/26/09	ARROW JOB NO. E-2000	DWG. NO. 39249
CKD.	EDR 14552		SHT OF