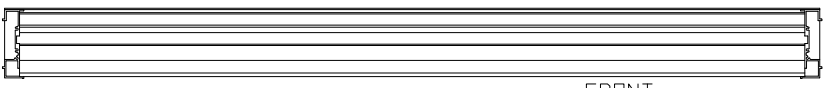


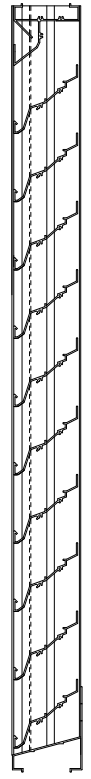
CHK	REVISION	DATE	APV/D
LTR	SEE ECR: 9303	3/9/09	MCT
A			

TOP VIEW



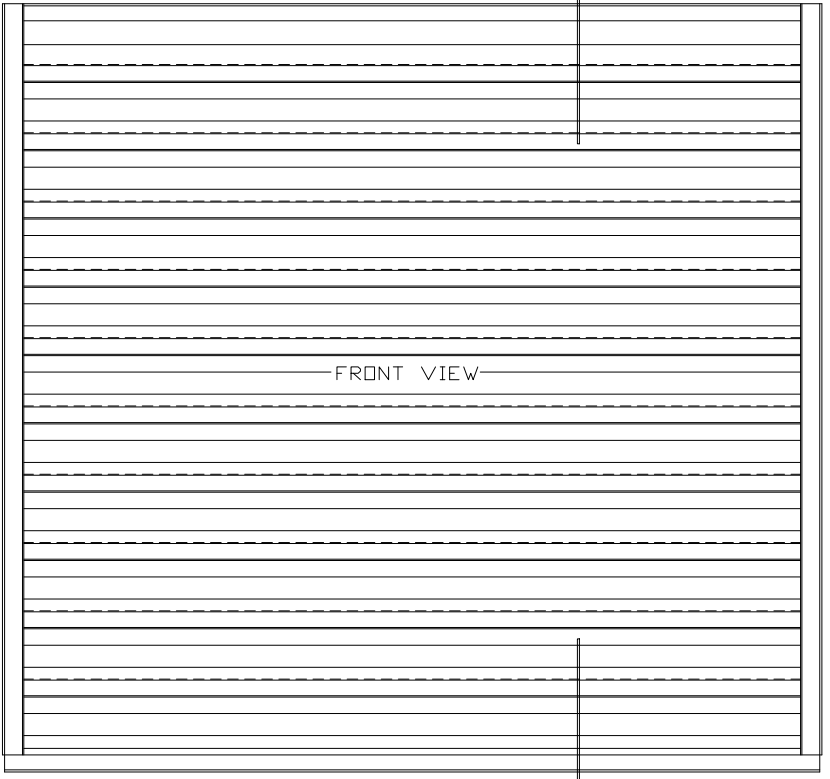
FRONT

FRONT OF LOUVER



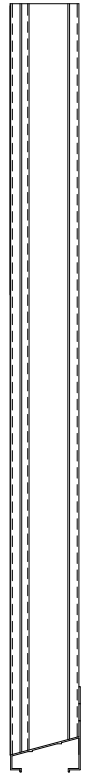
SECTION A-A

A ←



FRONT VIEW

A ←



SIDE VIEW

ARROW LOUVER MODEL: EA-22  
SCALE: 1/4"=1'

SPECIFICATIONS

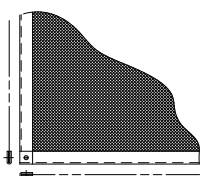
MATERIAL: EXTRUDED ALUMINUM 6063-T6/T52 ALLOY  
1/2" THK. (NOMINAL)  
FACE OF LOUVER: FULL WIDTH SILL WITH HEAD AND BLADES  
CONTAINED WITHIN JAMBS. APPROXIMATE  
BLADE CENTERS: 4"  
(WELDED CONSTRUCTION)  
SCREEN: (WHEN INDICATED, IN A REMOVABLE FRAME)  
BIRD SCREEN - 1/2" FLATTENED ALUMINUM, .051" THK.  
DR - 1/2" SQ. MESH INTERMEDIATE DOUBLE-  
CRIMPED ALUMINUM WIRE, .0637" DIA.  
DR - 18/16 MESH, .011" DIA. ALUMINUM  
WIRE INSECT SCREEN.

MINIMUM PANEL SIZE: 12" x 12"  
MAXIMUM SINGLE PANEL SIZE: 60" x 96"

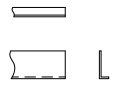
LOUVER PERFORMANCE STATEMENT

PASSED MIAMI-DADE COUNTY FLORIDA TEST PROTOCOLS  
PA201, PA202, AND PA203. THE ARROW LOUVER  
MODEL EA-22 SHALL BE FABRICATED TO PROVIDE A  
MINIMUM OF (50%), 837 SQUARE FEET OF FREE AREA  
FOR A 48" x 48" SIZE LOUVER AND BEAR THE AMCA  
CERTIFIED RATINGS PROGRAM SEAL FOR AIR PERFORMANCE  
AND WATER PENETRATION. THE RATING SHALL SHOW A  
BEGINNING POINT OF WATER PENETRATION AT .01 DUNCES  
PER SQUARE FOOT OF FREE AREA AT A FREE AREA VELOCITY  
OF 1075 FEET PER MINUTE, (8998) CUBIC FEET PER  
MINUTE, WITH 15 INCHES WATER GAUGE PRESSURE DRDP  
FOR AIR INTAKE.

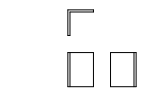
LOUVER ACCESSORIES



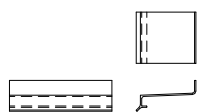
SCREEN



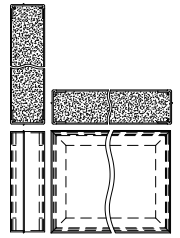
ADD-ON FLANGE



ANGLE MTG CLIP



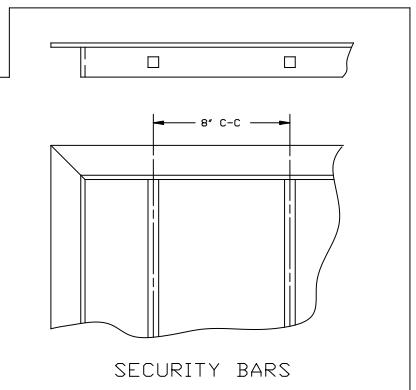
SILL EXTENSION



INSULATED BLANK-OFF



T-BAR



SECURITY BARS

		<b>ARROW UNITED INDUSTRIES</b> A Division of Mestek, Inc. 314 Riverside Drive - P.O. Box 69 - Wyalusing, PA 18853 AGENT:	
		MODEL EA-22 LOUVER	
CONTR.			
ARCH.			
P.O.		PROJECT	BIMS
DWN. MCT	DATE 1/26/09	ARROW JOB NO.	DWG. NO.
CKD.	EDR 14552	E-2000	39249
			SHT OF