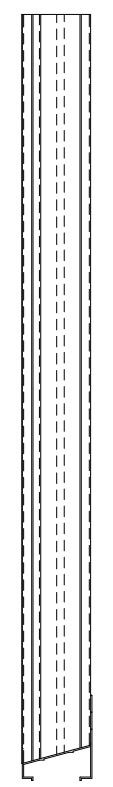
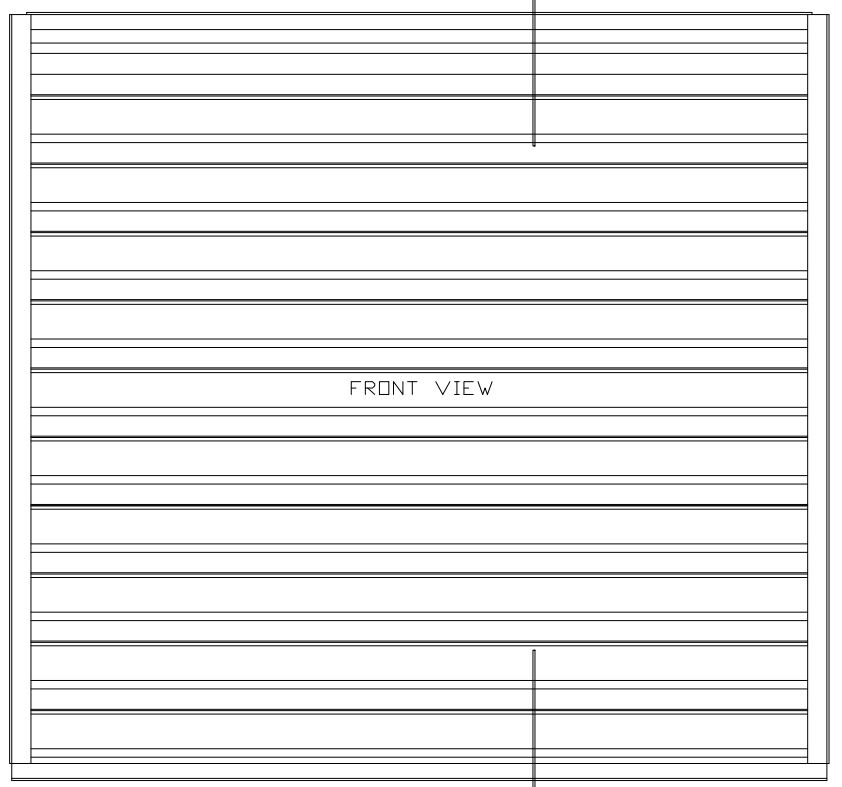
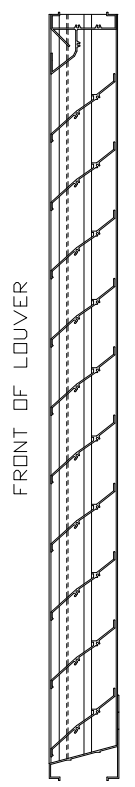
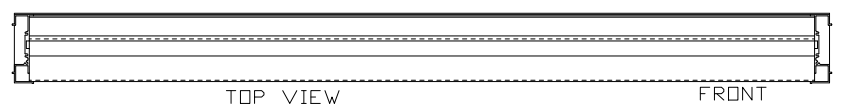


CHG	REVISION	DATE	APV/D
LTR			
A	SEE ECN 9303	3/9/09	MCT



SPECIFICATIONS

MATERIAL: EXTRUDED ALUMINUM 6063-T6/T52 ALLOY AVAILABLE IN .081" THK. AND .125" THK. (NOMINAL)

FACE OF LOUVER: FULL WIDTH SILL WITH HEAD AND BLADES CONTAINED WITHIN JAMBS. APPROXIMATE BLADE CENTERS 4"

SCREEN: (WHEN INDICATED, IN A REMOVABLE FRAME)
 BIRD SCREEN - 1/2" FLATTENED ALUMINUM, .051" THK.
 DR - 1/2" SQ MESH INTERMEDIATE DOUBLE-CRIMPED ALUMINUM WIRE, .063" DIA.
 DR - 18/16 MESH, .011" DIA. ALUMINUM WIRE INSECT SCREEN.

FINISH: _____

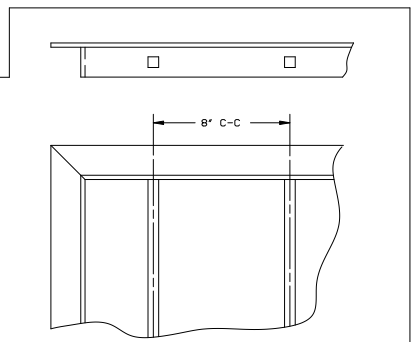
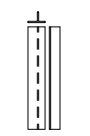
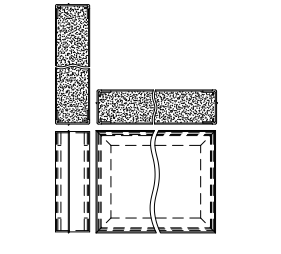
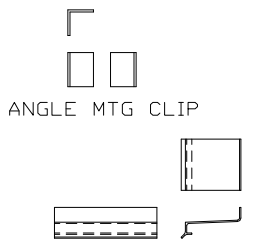
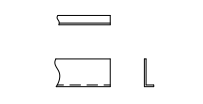
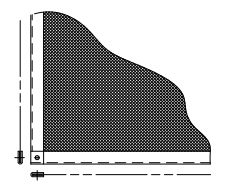
MINIMUM PANEL SIZE: 12' x 12'
 MAXIMUM SINGLE PANEL SIZE: 60' x 96'

LOUVER PERFORMANCE STATEMENT

LOUVER MODEL EA-405 SHALL BE FABRICATED TO PROVIDE A MINIMUM OF (56%), 902 SQUARE FEET OF FREE AREA FOR A 48" x 48" SIZE LOUVER AND BEAR THE AMCA CERTIFIED RATINGS PROGRAM SEAL FOR AIR PERFORMANCE AND WATER PENETRATION. THE RATING SHALL SHOW A BEGINNING POINT OF WATER PENETRATION AT .01 GALLONS PER SQUARE FOOT OF FREE AREA AT A FREE AREA VELOCITY OF 932 FEET PER MINUTE (8407) CUBIC FEET PER MINUTE, WITH .125 INCHES WATER GAUGE PRESSURE DROP FOR AIR INTAKE.

ARROW LOUVER MODEL: EA-405
SCALE: 1/4"=1'

LOUVER ACCESSORIES



		ARROW UNITED INDUSTRIES A Division of Mestek, Inc. 314 Riverside Drive - P.O. Box 69 - Wyalusing, PA 18853	
		AGENT:	
CUST.		MODEL EA-405 LOUVER	
CONTR.			
ARCH.			
P.O.		PROJECT	BIMS
DWN. MCT	DATE 1/26/09	ARROW JOB NO.	DWG. NO.
CKD.	EDR 14552	E-2000	39249
			SHT OF