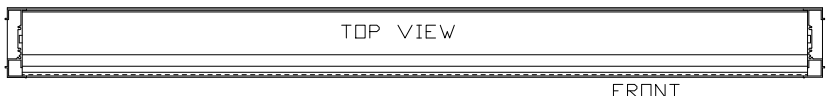
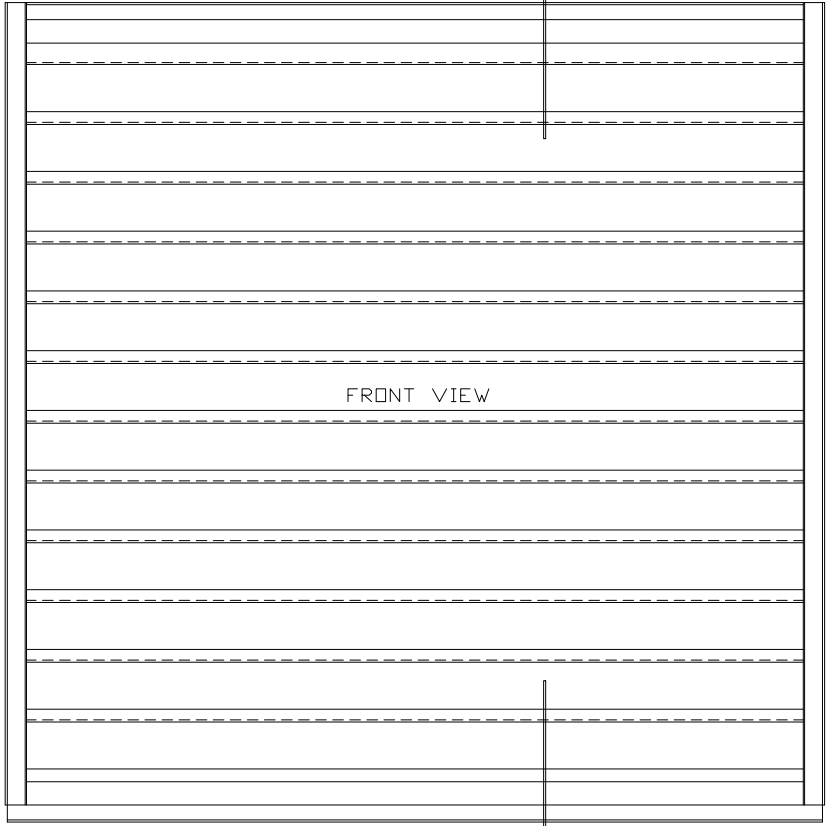
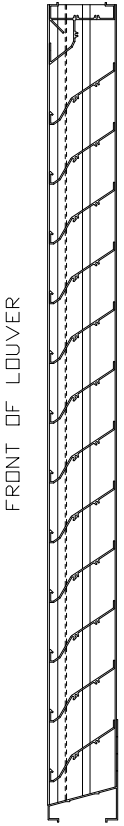


CHG	REVISION	DATE	APV/D
LTR	SEE ECN 9303	3/9/09	MCT
A			

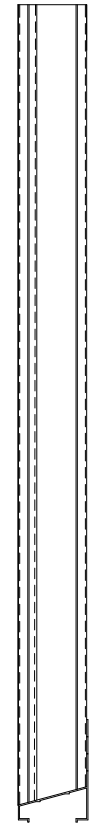


FRONT

A ←



A ←



**SPECIFICATIONS**

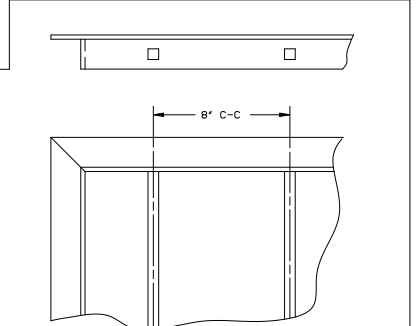
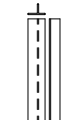
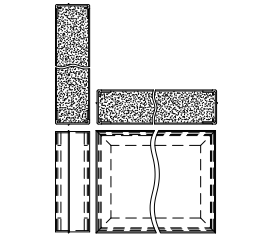
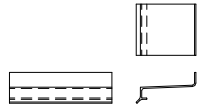
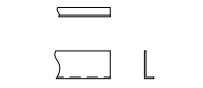
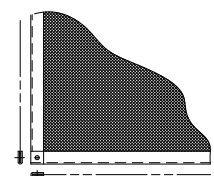
MATERIAL: EXTRUDED ALUMINUM 6063-T6/T52 ALLOY  
 AVAILABLE IN .081" THK. AND  
 .125" THK. (NOMINAL).  
 FACE OF LOUVER: ALL SURFACES ARE FLUSH WITH  
 JAMBS CONTAINED WITHIN THE  
 HEAD AND SILL. APPROXIMATE  
 BLADE CENTERS 3 1/2".  
 SCREEN: (WHEN INDICATED, IN A REMOVABLE FRAME)  
 BIRD SCREEN - 1/2" FLATTENED ALUMINUM .051" THK.  
 DR - 1/2" SQ. MESH INTERMEDIATE DOUBLE-  
 CRIMPED ALUMINUM WIRE, .063" DIA.  
 DR - 18/16 MESH, .011" DIA. ALUMINUM  
 WIRE INSECT SCREEN.  
 MINIMUM PANEL SIZE: 12" x 12"  
 MAXIMUM SINGLE PANEL SIZE: 60" x 96"

**LOUVER PERFORMANCE STATEMENT**

LOUVER MODEL EA-415-D SHALL BE FABRICATED TO PROVIDE  
 A MINIMUM OF (52%), 8.97 SQUARE FEET OF FREE AREA FOR  
 A 48" x 48" SIZE LOUVER AND BEAR THE AMCA CERTIFIED  
 RATINGS PROGRAM SEAL FOR AIR PERFORMANCE AND WATER  
 PENETRATION. THE RATING SHALL SHOW A BEGINNING  
 POINT OF WATER PENETRATION AT .01 OUNCES PER SQUARE  
 FOOT OF FREE AREA AT A FREE AREA VELOCITY OF 947  
 FEET PER MINUTE, (8495) CUBIC FEET PER MINUTE, WITH  
 .122 INCHES WATER GAUGE PRESSURE DROP FOR AIR INTAKE.

ARROW LOUVER MODEL:  
 EA-415-D  
 SCALE: 1/4"=1'

LOUVER ACCESSORIES



		<b>ARROW UNITED INDUSTRIES</b> A Division of Mestek, Inc. 314 Riverside Drive - P.O. Box 69 - Wyalusing, PA 18853 AGENT:	
		MODEL EA-415-D LOUVER	
CUST.		PROJECT	
CONTR.		BIMS	
ARCH.		ARROW JOB NO.	
P.O.		DWG. NO.	
DWN. MCT	DATE 1/26/09	ARROW JOB NO.	DWG. NO.
CKD.	EDR 14552	E-2000	39249