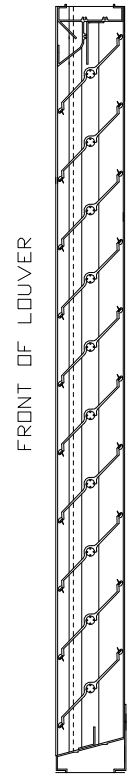


TOP VIEW

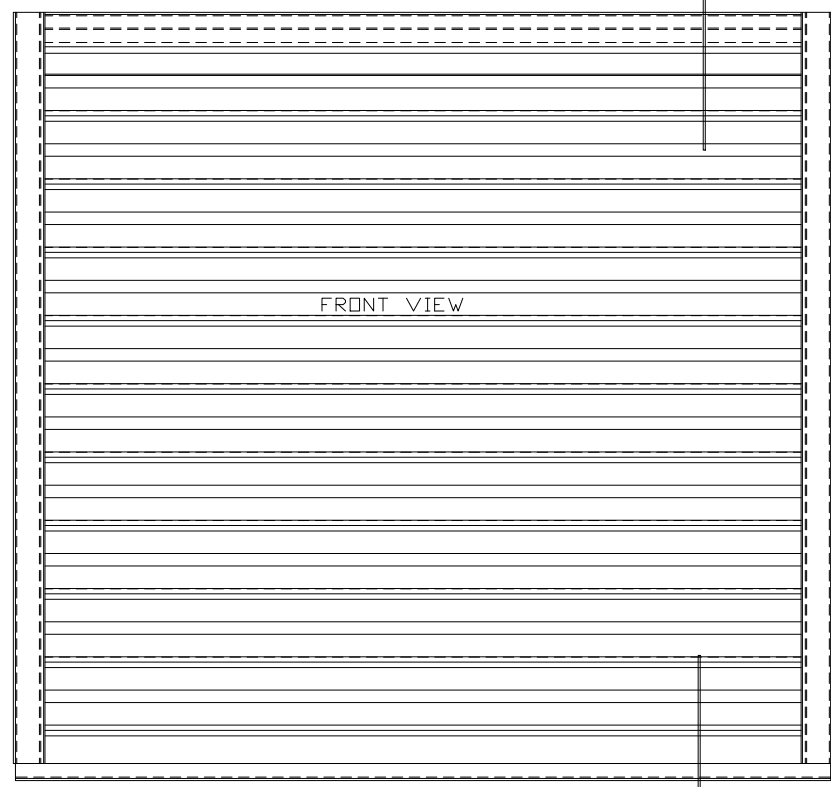
FRONT

A ←

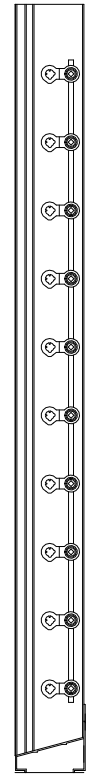


FRONT OF LOUVER

SECTION A-A



FRONT VIEW



SIDE VIEW

ARROW LOUVER MODEL:  
EA-444  
SCALE: 1/4"=1'

A ←

**SPECIFICATIONS**

BEARING: CELCON BEARING MATERIALS SO THAT THERE WILL BE NO METAL TO METAL FRICTION. OPERATING LINKAGE CONCEALED IN FRAME, OUT OF THE AIR STREAM.

MATERIAL: FRAME AND BLADE EXTRUDED ALUMINUM 6063-T6/TS2 ALLOY .080" THK., BLADES ON 4" CENTERS.

FACE OF LOUVER: FULL WIDTH SILL WITH DRAIN HEAD AND NON-DRAIN BLADES CONTAINED WITHIN THE DRAIN JAMBS.

LINKAGE: EXTRUDED ALUMINUM CONCEALED IN CHANNEL OUT OF AIRSTREAM. PIVOTS ARE .50" DIA. MACHINED STEEL, CADMIUM PLATED AND CHROMIATE TREATED. PIVOTS ROTATE IN A CELCON BEARING. A .312" DIA. ALUMINUM LINKAGE ROD IS LOCKED TO THE PIVOT BY A 1/4"-20 SET SCREW WITH AN EPDXY LOCKING PATCH.

SHAFTS: .50" DIA. ALUMINUM "PIN-LOCK" ROD.

SEALS: EXTRUDED SILICONE RUBBER SEAL AT BLADE EDGE. POLYURETHANE AT THE JAMBS.

SCREENS: WHEN INDICATED, IN A REMOVABLE FRAME.  
BIRD SCREEN - 1/2" FLATTENED ALUMINUM .051" THK. DR - 1/2" SQ. MESH, INTERMEDIATE DOUBLE-CRIMPED ALUMINUM WIRE, .063" DIA.  
DR - 18/16 MESH, .011" DIA ALUMINUM WIRE, INSECT SCREEN.

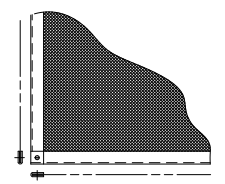
FINISH: MILL.

LOUVER SIZES: 12" x 12" MINIMUM PANEL SIZE.  
48" x 96" MAXIMUM PANEL SIZE.

**LOUVER PERFORMANCE STATEMENT**

LOUVER MODEL EA-444 SHALL BE FABRICATED TO PROVIDE A MINIMUM OF (42%), 6.84 SQUARE FEET OF FREE AREA FOR A 48" x 48" SIZE LOUVER. TESTED IN ACCORDANCE TO AMCA STANDARD 500-L-99. THE BEGINNING POINT OF WATER PENETRATION AT .01 OUNCES PER SQUARE FOOT OF FREE AREA AT A FREE AREA VELOCITY OF 1044 FEET PER MINUTE, (7141) CUBIC FEET PER MINUTE WITH A 16 INCHES WATER GAUGE PRESSURE DROP AT 1000 FPM FOR AIR INTAKE.

LOUVER ACCESSORIES



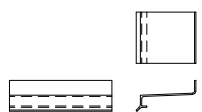
SCREEN



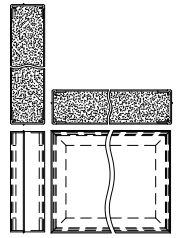
ADD-ON FLANGE



ANGLE MTG CLIP



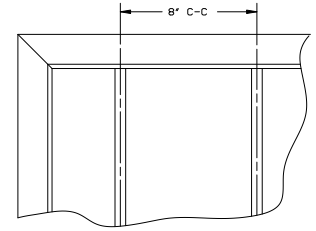
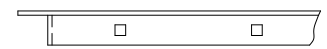
SILL EXTENSION




INSULATED BLANK-OFF



T-BAR



SECURITY BARS

|   |              |                        |          |
|---|--------------|------------------------|----------|
|  <b>ARROW UNITED INDUSTRIES</b><br>A Division of Mestek, Inc.<br>314 Riverside Drive - P.O. Box 69 - Wyalusing, PA 18853<br>AGENT: |              |                        |          |
| CUST.   |              | MODEL EA-425-DD LOUVER |          |
| CONTR.  |              | PROJECT                | BIMS     |
| ARCH.   |              | ARROW JOB NO.          | DWG. NO. |
| DWN. MCT  | DATE 3/17/09 | ARROW JOB NO.          | DWG. NO. |
| CKD.  | EDR 14552    | E-2000                 | 39249    |
|   |              |                        | SHT OF   |