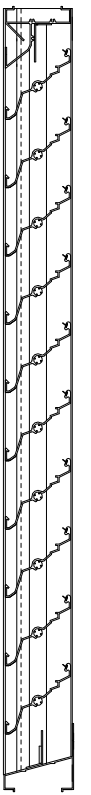
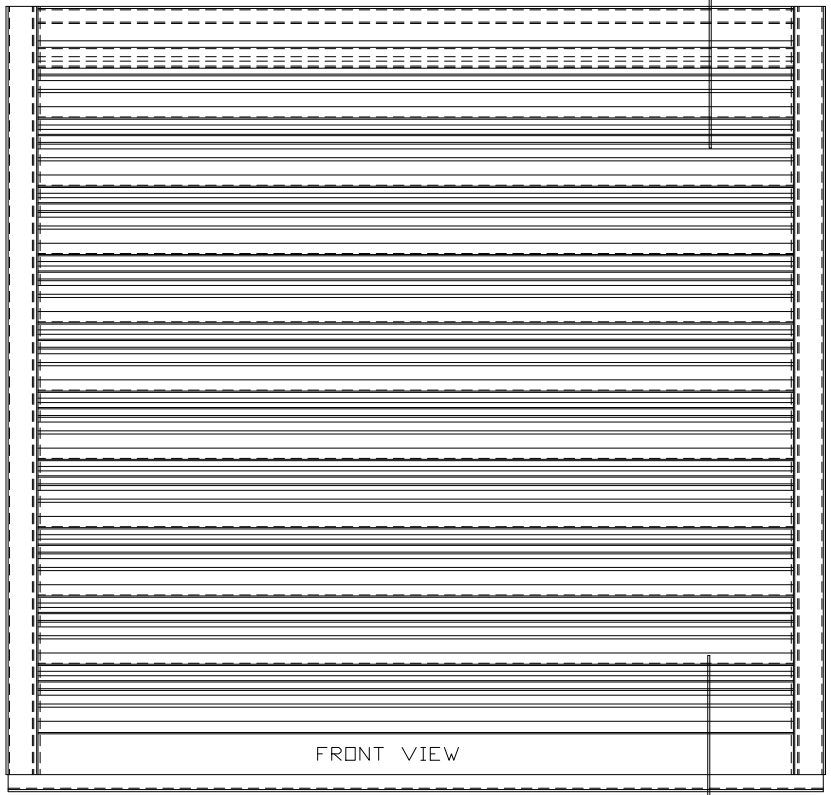


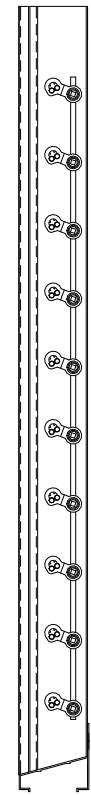
TOP VIEW FRONT



FRONT OF LOUVER



FRONT VIEW



SIDE VIEW

**SPECIFICATIONS**

BEARINGS: CELCON BEARING MATERIAL SO THAT THERE WILL BE NO METAL TO METAL FRICTION OPERATING LINKAGE CONCEALED IN FRAME, OUT OF THE AIR STREAM.

MATERIAL: FRAME AND BLADE EXTRUDED ALUMINUM 6063-T6/T52 ALLY .050" THK; BLADES .014" CENTER.

FACE OF LOUVER: FULL WIDTH SILL WITH DRAIN HEAD AND DRAIN BLADES CONTAINED WITHIN THE DRAIN JAMBS.

LINKAGE: EXTRUDED ALUMINUM, CONCEALED IN CHANNEL OUT OF AIRSTREAM. PIVOTS ARE .50" DIA. MACHINED STEEL, CADMIUM PLATED AND CHROMATE TREATED. PIVOTS ROTATE IN A CELCON BEARING, A .312" DIA. ALUMINUM LINKAGE ROD IS LOCKED TO THE PIVOT BY A 1/4"-20 SET SCREW WITH AN EPOXY LOCKING PATCH.

SHAFTS: .50" DIA. ALUMINUM "PIN-LOCK" ROD.

SEALS: EXTRUDED SILICONE RUBBER SEAL AT BLADE EDGE. POLYURETHANE AT THE JAMBS.

SCREENS: WHEN INDICATED, IN A REMOVABLE FRAME.  
 BIRD SCREEN - 1/2" FLATTENED ALUMINUM, .051" THK  
 DR - 1/2" SQ MESH, INTERMEDIATE DOUBLE-CRIMPED ALUMINUM WIRE, .063" DIA.  
 DR - 18/16 MESH, .011" DIA. ALUMINUM WIRE, INSECT SCREEN.

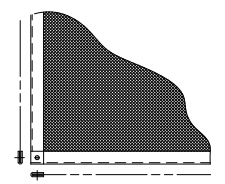
FINISH: MILL.  
 LOUVER SIZES: 12" x 12" MINIMUM PANEL SIZE.  
 48" x 96" MAXIMUM PANEL SIZE.

**LOUVER PERFORMANCE STATEMENT**

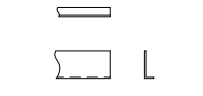
LOUVER MODEL EA-450-D SHALL BE FABRICATED TO PROVIDE A MINIMUM OF (44%), 7.07 SQUARE FEET OF FREE AREA FOR A 48" x 48" SIZE LOUVER TESTED IN ACCORDANCE TO AMCA STANDARD 500-L-99. THE BEGINNING POINT OF WATER PENETRATION AT 30 DUNCES PER SQUARE FOOT OF FREE AREA AT A FREE AREA VELOCITY OF 974 FEET PER MINUTE, (6896) CUBIC FEET PER MINUTE, WITH A 14 INCHES WATER GAUGE PRESSURE DROP AT 1000 FPM FOR AIR INTAKE.

ARROW LOUVER MODEL:  
EA-450-D  
SCALE: 1/4"=1'

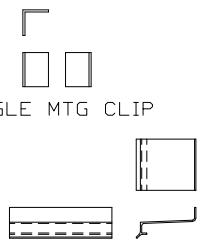
LOUVER ACCESSORIES



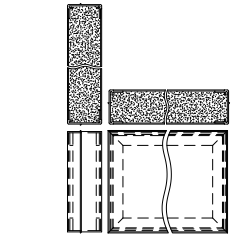
SCREEN



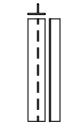
ADD-ON FLANGE



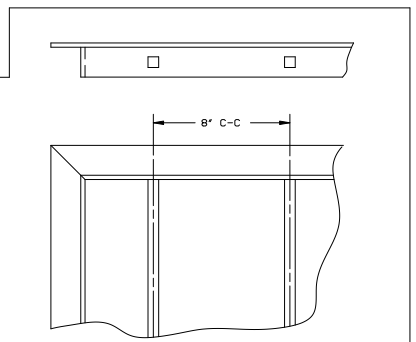
ANGLE MTG CLIP



INSULATED BLANK-OFF



T-BAR



SECURITY BARS

		<b>ARROW UNITED INDUSTRIES</b> A Division of Mestek, Inc. 314 Riverside Drive - P.O. Box 69 - Wyalusing, PA 18853 AGENT:	
		MODEL EA-450-D LOUVER	
CONTR.			
ARCH.		PROJECT	BIMS
DWN	MCT	DATE 3/17/09	ARROW JOB NO. E-2000
CKD.	EDR	14552	DWG. NO. 39249
			SHT. OF