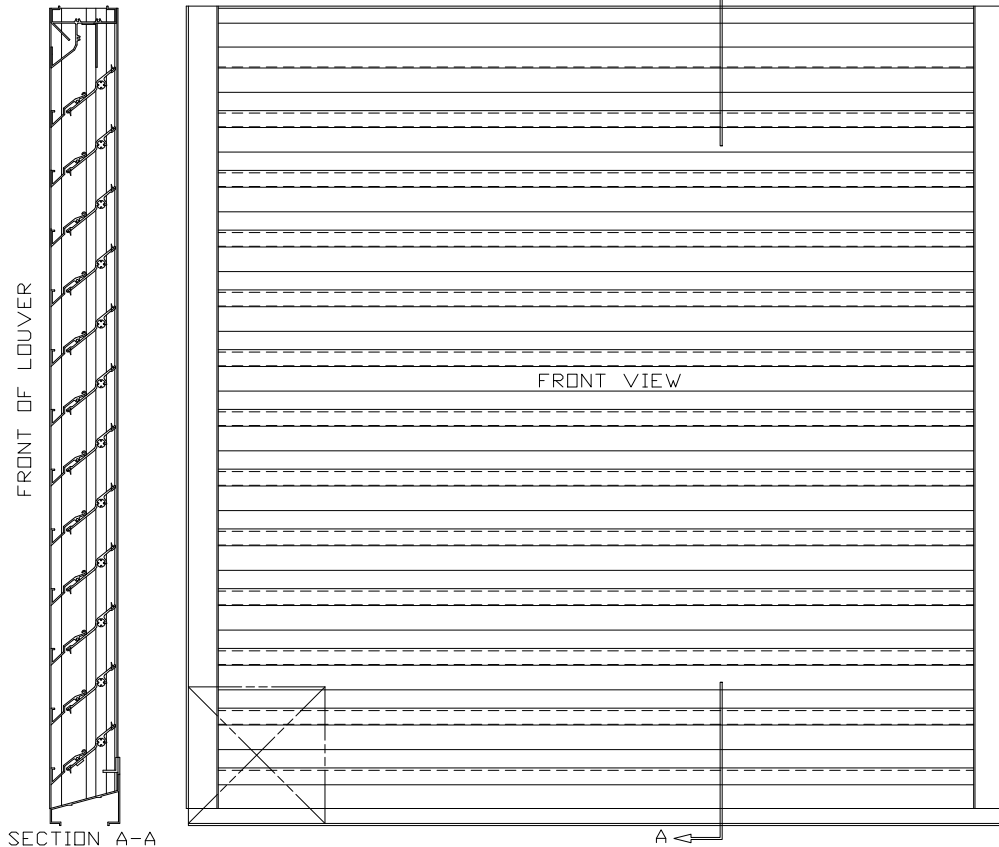
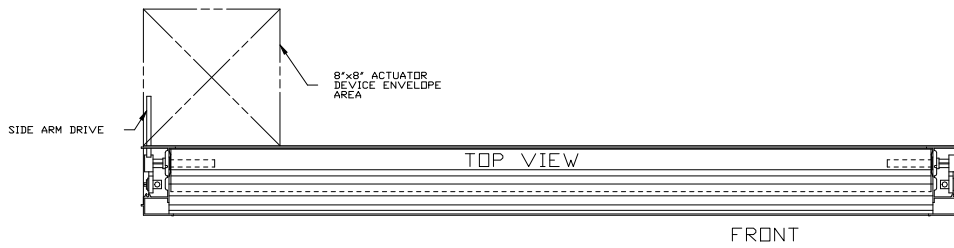
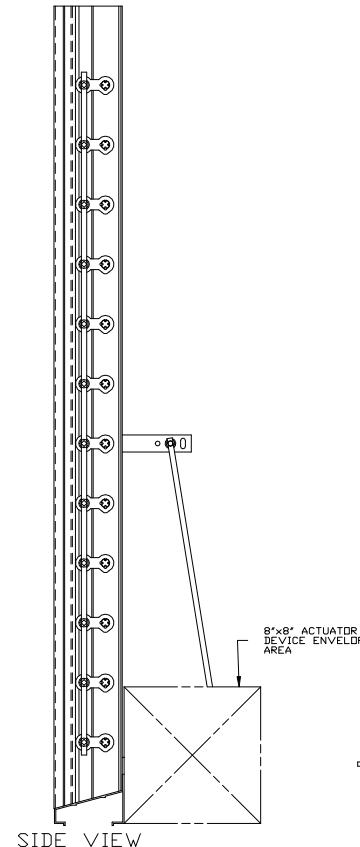


CHK	REVISION	DATE	APV/D
LTR			
A	SEE ECRN 9303	3/9/09	MCT



ARROW LOUVER MODEL: EA-480-D  
SCALE: 1/4"=1'



**SPECIFICATIONS**

FRAME AND STATIONARY BLADE: EXTRUDED ALUMINUM, 6063-T6/T52 ALLOY, FRAME IS .080" THK. BLADE IS .080" THK. ON 3 1/2" CENTERS.

ADJUSTABLE BLADE: EXTRUDED ALUMINUM 6063-T6/T52 ALLOY, .125" THK.

FACE OF LOUVER: FULL WIDTH SILL WITH HEAD AND BLADES CONTAINED WITHIN THE JAMBS.

LINKAGE: EXTRUDED ALUMINUM, CONCEALED IN CHANNEL OUT OF AIRSTREAM. THE TRUNNIONS, WHICH ROTATE IN CELCON BEARINGS, ARE 1/2" DIAMETER CADMIUM PLATED AND CHROMIATE TREATED MACHINED STEEL. THE TRUNNION IS LOCKED TO THE 5/16" DIA. ALUMINUM LINKAGE ROD BY A 1/4"-20 SET SCREW WITH AN EPOXY LOCKING PATCH.

AXLES: 1/2" DIA. ALUMINUM "PIN-LOCK" EXTRUSION.

SEALS: EXTRUDED SILICONE RUBBER SEAL AT BLADE EDGE. FOAM ON BOTTOM BLADE & STAINLESS STEEL AT JAMB.

SCREENS: WHEN INDICATED, IN A REMOVABLE FRAME.

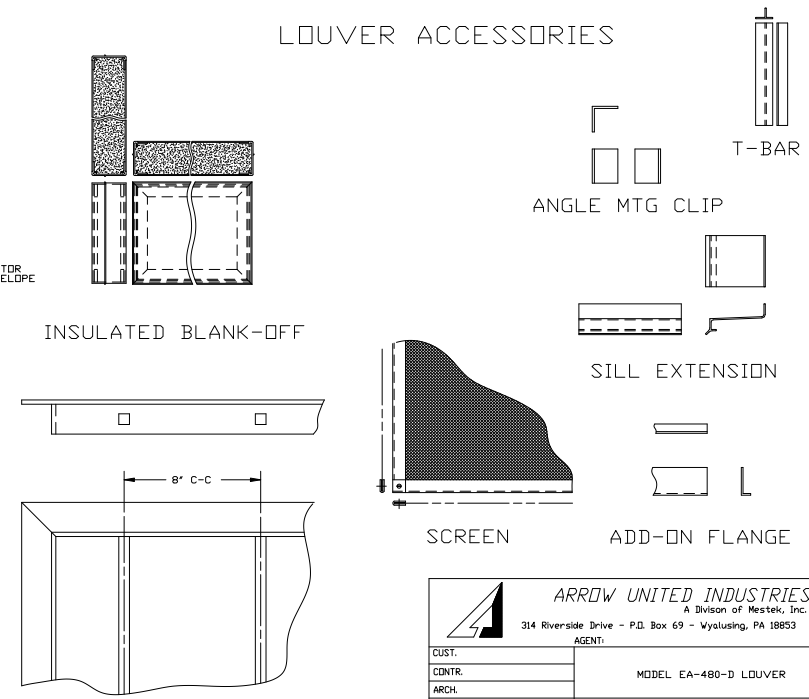
BIRD SCREEN - 1/2" FLATTENED ALUMINUM, .051" THK.  
DR - 1/2" SQ MESH, INTERMEDIATE DOUBLE-CRIMPED ALUMINUM WIRE, .063 DIA.  
INSECT SCREEN - 18/16 MESH, .011" DIA. ALUMINUM WIRE, .063 DIA.

FINISH: MILL.

LOUVER SIZES: 12" x 12" MINIMUM PANEL SIZE.  
48" x 96" MAXIMUM PANEL SIZE.

**LOUVER PERFORMANCE STATEMENT**

LOUVER MODEL EA-480-D SHALL BE FABRICATED TO PROVIDE A MINIMUM OF (52%) 836 SQUARE FEET OF FREE AREA FOR A 48" x 48" SIZE LOUVER AND BEAR THE AMCA CERTIFIED RATINGS SEAL FOR AIR PERFORMANCE AND WATER PENETRATION. THE RATINGS SHALL SHOW A BEGINNING POINT OF WATER PENETRATION AT 01 GUNGES PER SQUARE FOOT OF FREE AREA AT A FREE AREA VELOCITY OF 994 FEET PER MINUTE, (8309) CUBIC FEET PER MINUTE, WITH A .14 INCHES WATER GAUGE PRESSURE DROP FOR AIR INTAKE.



		<b>ARROW UNITED INDUSTRIES</b> A Division of Mestek, Inc. 314 Riverside Drive - P.O. Box 69 - Wyalusing, PA 18853 AGENT:	
CUST.		PROJECT	BIMS
CONTR.		ARROW JOB NO.	DWG. NO.
ARCH.		DATE 1/26/09	39249
DWN. MCT	DATE 1/26/09	EDR. 14552	E-2000
CKD.			