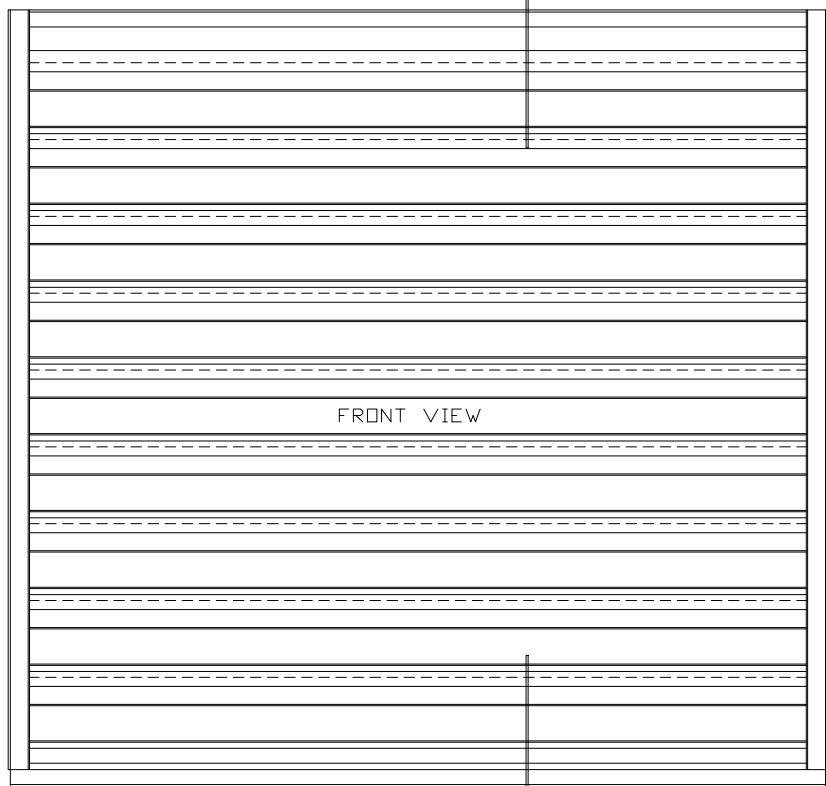


CHK	REVISION	DATE	APV/D
LTR			
A	SEE ECN 9303	3/9/09	MCT

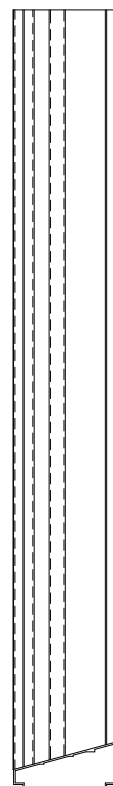


TOP VIEW

FRONT



FRONT VIEW



SIDE VIEW

**SPECIFICATIONS**

MATERIAL: EXTRUDED ALUMINUM 6063-T6/TS2 ALLOY  
 AVAILABLE IN .081" THK. AND .125" THK.  
 NOMINAL

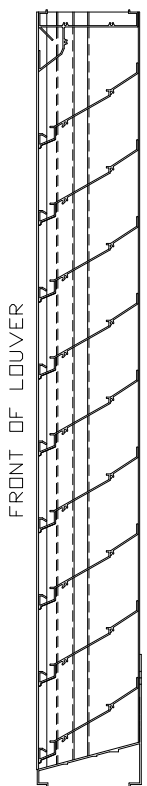
FACE OF LOUVER: FULL WIDTH SILL WITH HEAD AND BLADES  
 CONTAINED WITHIN JAMBS. APPROXIMATE  
 BLADE CENTERS 4 1/2"

SCREEN: (WHEN INDICATED, IN A REMOVABLE FRAME)  
 BIRD SCREEN - 1/2" FLATTENED ALUMINUM, .051" THK.  
 OR - 1/2" SQ. MESH, INTERMEDIATE DOUBLE-  
 CRIMPED ALUMINUM WIRE, .063" DIA.  
 OR - 18/16 MESH, .011" DIA. ALUMINUM  
 WIRE INSECT SCREEN.

MINIMUM PANEL SIZE: 12" x 12"  
 MAXIMUM SINGLE PANEL SIZE: 60" x 96"

**LOUVER PERFORMANCE STATEMENT**

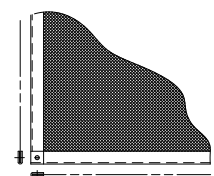
LOUVER MODEL EA-615-D SHALL BE FABRICATED TO PROVIDE  
 A MINIMUM OF (56%) 5.97 SQUARE FEET OF FREE AREA FOR  
 A 48" x 48" SIZE LOUVER AND BEAR THE AMCA CERTIFIED  
 RATINGS PROGRAM SEAL FOR AIR PERFORMANCE AND WATER  
 PENETRATION. THE RATINGS SHALL SHOW A BEGINNING POINT  
 OF WATER PENETRATION AT .01 DUNCES PER SQUARE FOOT OF  
 FREE AREA TO BE ABOVE 1250 FPM (1,212) CUBIC FEET  
 PER MINUTE, WITH 12 INCHES WATER GAUGE PRESSURE,  
 DROP AT 1000 FPM AIR INTAKE.



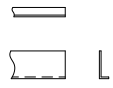
SECTION A-A

ARROW LOUVER MODEL: EA-615-D  
 SCALE: 1/4"=1'

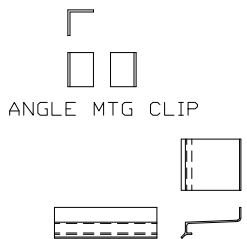
LOUVER ACCESSORIES



SCREEN



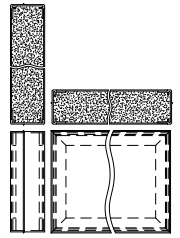
ADD-ON FLANGE



ANGLE MTG CLIP



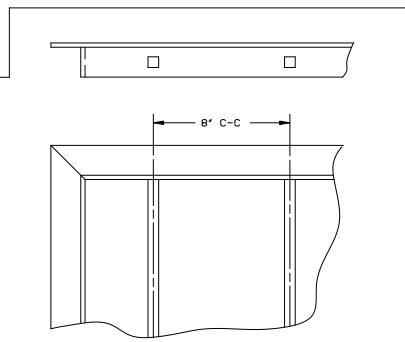
SILL EXTENSION



INSULATED BLANK-OFF



T-BAR



SECURITY BARS

**ARROW UNITED INDUSTRIES**  
 A Division of Mestek, Inc.  
 314 Riverside Drive - P.O. Box 69 - Wyalusing, PA 18853

AGENT:

CUST.	MODEL EA-615-D LOUVER		
CONTR.			
ARCH.			
P.O.	PROJECT	BIMS	
DWN. MCT	DATE 1/26/09	ARROW JOB NO.	DWG. NO.
CKD.	EDR 14552	E-2000	39249

SHT OF