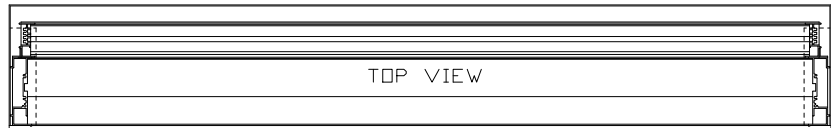
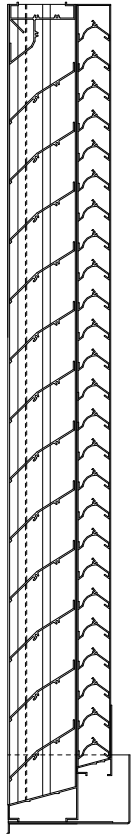


CHK	REVISION	DATE	APV/D
LTR	SEE ECR: 9303	3/9/09	MCT
A			

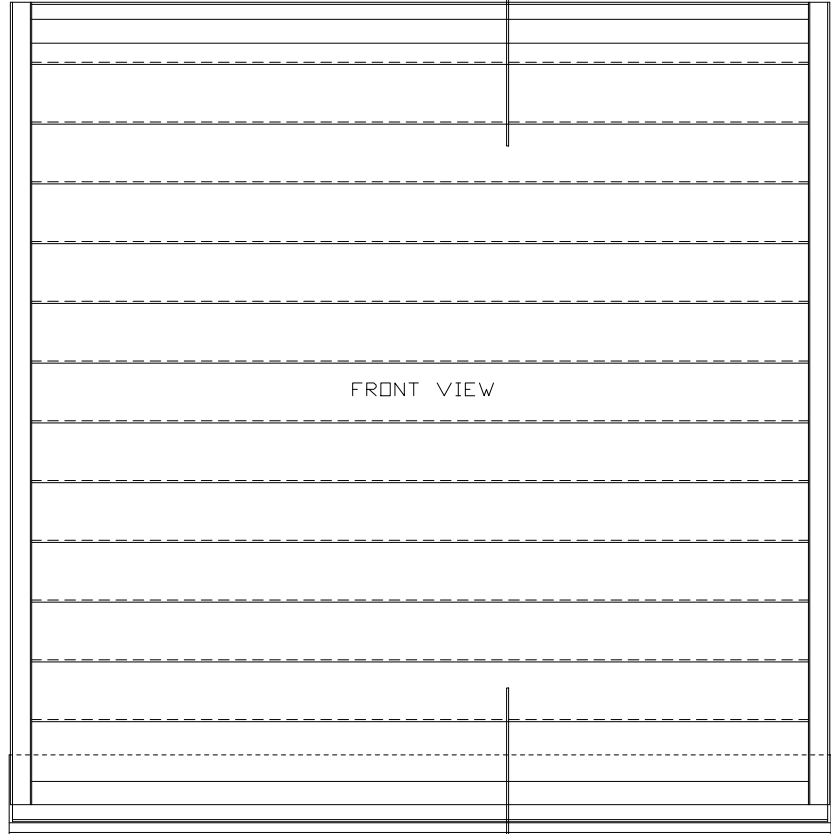


TOP VIEW

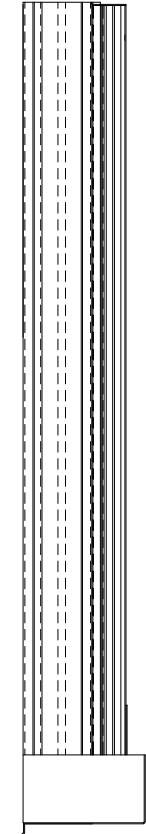
FRONT



FRONT OF LOUVER



FRONT VIEW



SIDE VIEW

**SPECIFICATIONS**

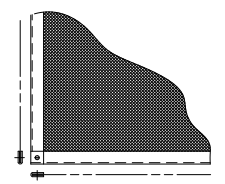
MATERIAL: EXTRUDED ALUMINUM 6063-T6/T52 ALLOY  
 FRAMES: EXTERIOR FRAME IS 4" DEEP,  
 .081" THICK NOMINAL.  
 INTERIOR FRAME IS 2" DEEP,  
 .063" THICK NOMINAL.  
 BLADES: SIGHT PROFILE DOUBLE BLADE WITH  
 EXTERIOR BLADE AT 37° ANGLE,  
 3 1/2" CENTERS. INTERIOR BLADE IS  
 HORIZONTAL CHEVRON DN 1 3/4" CENTERS.  
 FACE OF LOUVER: FULL WIDTH SILL WITH HEAD AND BLADES  
 CONTAINED IN JAMBS.  
 SCREENS: WHEN INDICATED, IN A REMOVABLE FRAME.  
 BIRD SCREEN - 1/2" FLATTENED ALUMINUM, .051 THK.  
 OR - 1/2" SQ. MESH, INTERMEDIATE DOUBLE-CRIMPED  
 ALUMINUM WIRE, .063 DIA.  
 OR - 18/16 MESH, .011" DIA. ALUMINUM WIRE,  
 INSECT SCREEN.  
 DRAIN SILL PAN: .060" THICK FORMED ALUMINUM.  
 LOUVER SIZES: 12" x 12" MINIMUM PANEL SIZE.  
 60" x 96" MAXIMUM PANEL SIZE.

**LOUVER PERFORMANCE STATEMENT**

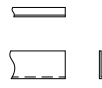
LOUVER MODEL EA-620 SHALL BE FABRICATED TO PROVIDE A  
 MINIMUM FREE AREA (44%), 7.07 SQUARE FEET OF FREE AREA  
 FOR A 48"x48" SIZE LOUVER, WITH .097 INCHES WATER GAUGE  
 PRESSURE DRIP AT 800 FPM FOR AIR INTAKE. IN ADDITION,  
 THIS LOUVER MODEL IS ALSO TESTED TO THE AMCA 500-L-99  
 WIND DRIVEN RAIN TEST STANDARD, WHERE THE LOUVER IS  
 SUBJECTED TO SIMULATED WIND DRIVEN RAIN. THE RESULT OF  
 THIS TEST SHALL SHOW A CLASS "A" RATING HAVING (99.1%)  
 EFFICIENCY AT 3 INCHES OF RAINFALL AT AN INTAKE  
 VELOCITY OF 260 FPM (838 CFM) AT A WIND SPEED OF  
 29 MPH, FOR A SIZE 48"x48".

ARROW LOUVER MODEL: EA-620  
 SCALE: 1/4"=1'

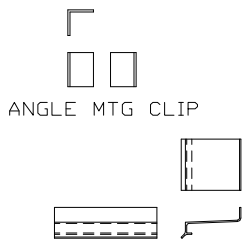
LOUVER ACCESSORIES



SCREEN



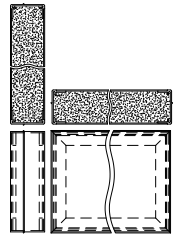
ADD-ON FLANGE



ANGLE MTG CLIP



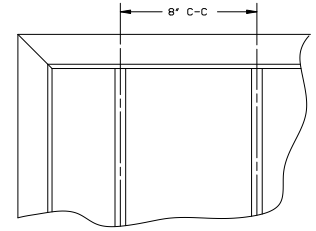
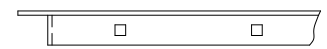
SILL EXTENSION



INSULATED BLANK-OFF



T-BAR



SECURITY BARS

		<b>ARROW UNITED INDUSTRIES</b> A Division of Mestek, Inc. 314 Riverside Drive - P.O. Box 69 - Wyalusing, PA 18853 AGENT:	
		MODEL EA-620 LOUVER	
CONTR.			
ARCH.		PROJECT	BIMS
P.O.		ARROW JOB NO.	DWG. NO.
DWN. MCT	DATE 1/26/09	E-2000	39249
CKD.	EDR 14552		SHT OF