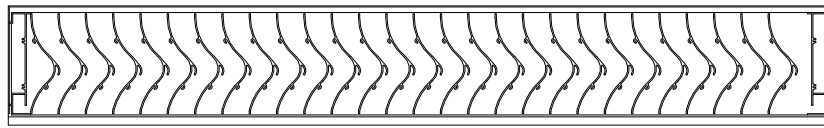
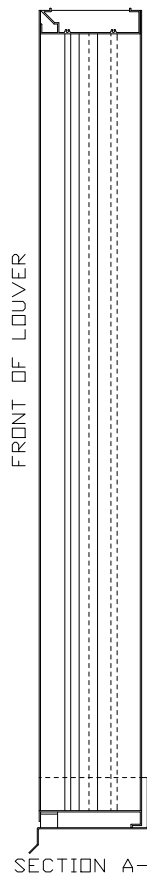


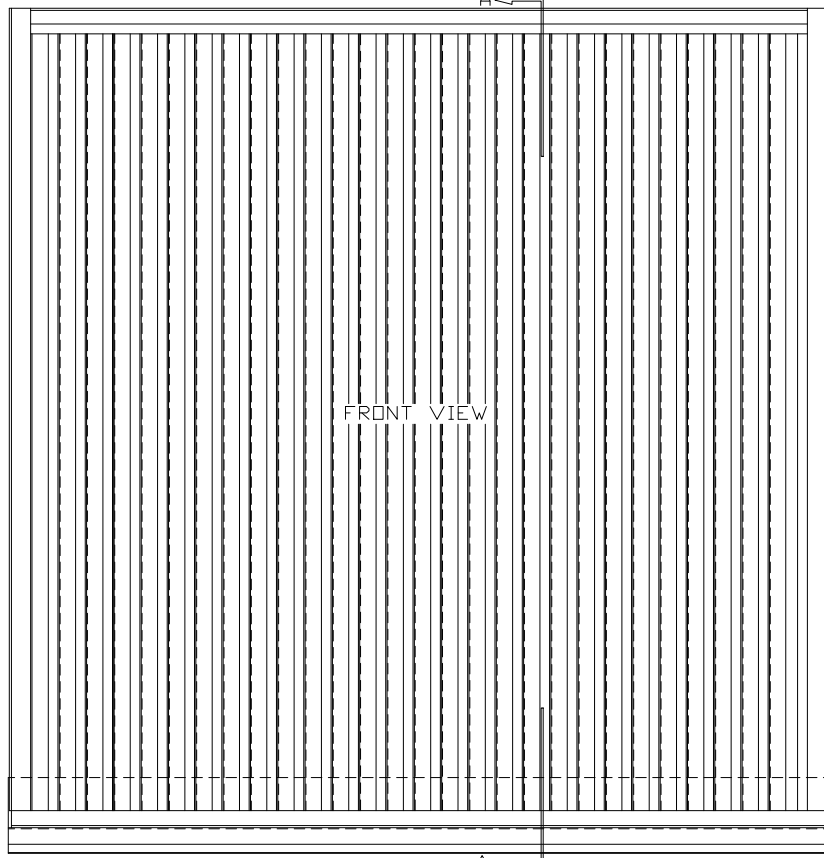
CHK	REVISION	DATE	APVD
LTR			
A	SEE ECRN 9303	3/9/09	MCT



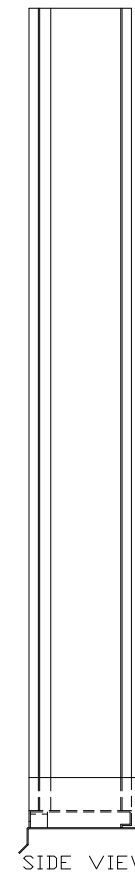
TOP VIEW FRONT



SECTION A-A



FRONT VIEW



SIDE VIEW

ARROW LOUVER MODEL: EA-662-VSL  
SCALE: 1/4"=1'

**SPECIFICATIONS**

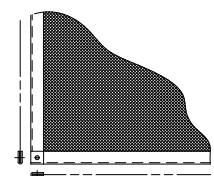
FRAME AND BLADE: EXTRUDED ALUMINUM 6063-T6/T52  
 ALLDY: .080" THK. NOMINAL  
 FACE OF LOUVER: HEAD AND BLADES ARE CONTAINED  
 WITHIN JAMBS. SILL CONTAINS JAMBS.  
 APPROXIMATE VERTICAL BLADE CENTERS  
 16" NOMINAL  
 SCREENS: WHEN INDICATED, IN A REMOVABLE FRAME.  
 BIRD SCREEN - 1/2" FLATTENED ALUMINUM, .091" THK.  
 DR - 1/2" SQ. MESH, INTERMEDIATE DOUBLE-CRIMPED  
 ALUMINUM WIRE, .063 DIA.  
 DR - 18/16 MESH, .011" DIA. ALUMINUM WIRE,  
 INSECT SCREEN.  
 EXTENDED SILL: .060" THK. FORMED ALUMINUM.

LOUVER SIZES: 12" x 12" MINIMUM PANEL SIZE.  
 30 SQUARE FEET IS THE MAXIMUM SECTION SIZE.  
 LOUVERS LARGER THAN THE MAXIMUM FACTORY  
 ASSEMBLY SIZE WILL REQUIRE FIELD  
 ASSEMBLY OF SMALLER LOUVER SECTIONS.

**LOUVER PERFORMANCE STATEMENT**

LOUVER MODEL EA-662-VSL SHALL BE FABRICATED TO PROVIDE  
 A MINIMUM OF (53%) 8.51 SQUARE FEET OF FREE AREA FOR A  
 SIZE 48"x48" LOUVER AND BEAR THE AMCA CERTIFIED RATINGS  
 SEAL FOR AIR PERFORMANCE, WATER PENETRATION AND WIND  
 DRIVEN RAIN. THE RATINGS SHALL SHOW A BEGINNING POINT  
 OF WATER PENETRATION AT 01 DUNGES PER SQUARE FOOT OF  
 FREE AREA TO BE ABOVE 1250 FPM (10,638) WITH 103 INCHES  
 WATER GAUGE PRESSURE DROP AT 1000 FPM AIR INTAKE.  
 IN ADDITION THIS LOUVER IS TESTED TO AMCA 500-L-99 WIND  
 DRIVEN RAIN TEST STANDARD WHERE THE LOUVER IS SUBJECTED TO  
 SIMULATED WIND DRIVEN RAIN. THE RESULT OF THIS TEST SHALL  
 SHOW A CLASS "A" RATING HAVING (100%) EFFICIENCY AT 3 INCHES  
 OF RAIN FALL AT AN INTAKE VELOCITY OF 1,785 FPM (15,190 CFM)  
 AT A WIND SPEED OF 29 MPH.  
 AND (100%) EFFICIENCY AT 8 INCHES OF RAINFALL AT AN INTAKE  
 VELOCITY OF 1,708 FPM (14,535 CFM) AT A WIND SPEED OF 50 MPH  
 FOR A SIZE 48"x48" LOUVER.

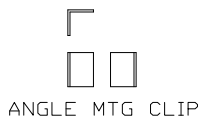
LOUVER ACCESSORIES



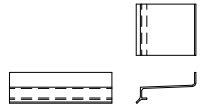
SCREEN



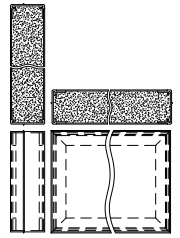
ADD-ON FLANGE



ANGLE MTG CLIP



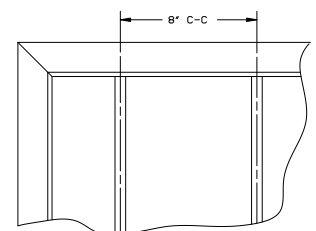
SILL EXTENSION



INSULATED BLANK-OFF



T-BAR



SECURITY BARS

<p><b>ARROW UNITED INDUSTRIES</b>          A Division of Mestek, Inc.          314 Riverside Drive - P.O. Box 69 - Wyalusing, PA 18853          AGENT:</p>					
				CUST.	
CONTR.		PROJECT		BIMS	
P.O.		ARROW JOB NO.		DWG. NO.	
DWN. MCT DATE 1/26/09		E-2000		39249	
CKD. EDR 14552				SHT OF	