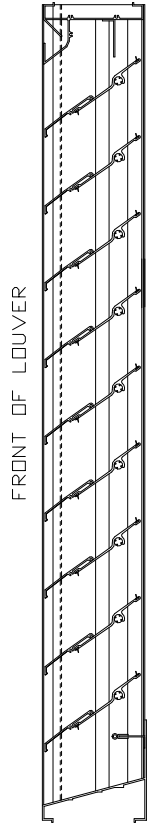


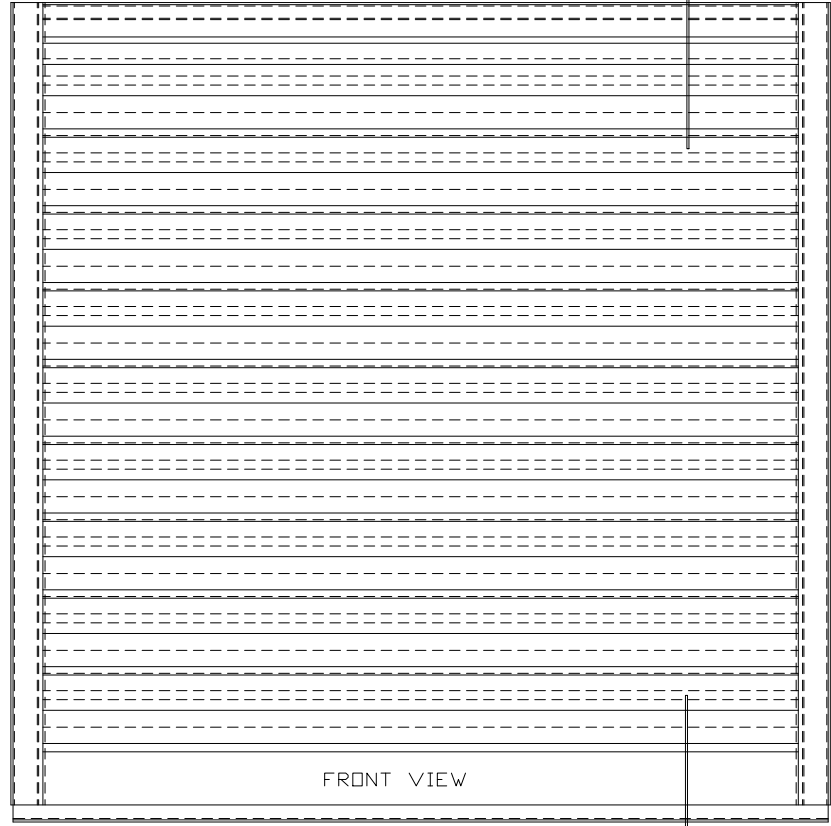


TOP VIEW

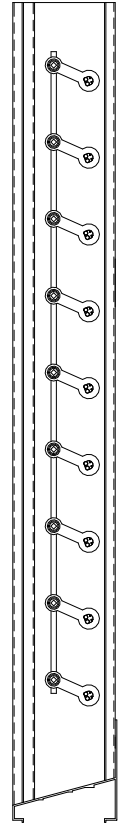
FRONT



FRONT OF LOUVER



FRONT VIEW



SIDE VIEW

SPECIFICATIONS

FRAME AND STATIONARY BLADE: EXTRUDED ALUMINUM 6063-T6/T52 ALLOY. FRAME IS .080" THK., BLADE IS .080" THK. ON 4 1/2" CENTERS.

ADJUSTABLE BLADE: EXTRUDED ALUMINUM 6063-T6/T52 ALLOY, .125" THK.

FACE OF LOUVER: FULL WIDTH SILL WITH HEAD AND BLADES CONTAINED WITHIN THE JAMBS.

LINKAGE: EXTRUDED ALUMINUM, CONCEALED IN CHANNEL OUT OF AIRSTREAM. THE TRUNNIONS, WHICH ROTATE IN CELCON BEARINGS ARE 1/2" DIAMETER, CADMIUM PLATED AND CHROMIATE TREATED MACHINED STEEL. THE TRUNNION IS LOCKED TO THE 5/16" DIA. ALUMINUM LINKAGE ROD BY A 1/4"-20 SET SCREW WITH AN EPDXY LOCKING PATCH.

SHAFTS: 1/2" DIA. ALUMINUM "PIN-LOCK" EXTRUSION.

SEALS: EXTRUDED SILICONE RUBBER SEAL ON BLADE EDGE. FDAM ON BOTTOM BLADE & STAINLESS STEEL AT JAMB.

SCREENS: WHEN INDICATED, IN A REMOVABLE FRAME.

BIRD SCREEN - 1/2" FLATTENED ALUMINUM .051" THK. DR - 1/2" SQ. MESH, INTERMEDIATE DOUBLE-CRIMPED ALUMINUM WIRE, .063 DIA.

DR - 18/16 MESH, .011" DIA. ALUMINUM WIRE, INSECT SCREEN.

FINISH: MILL.

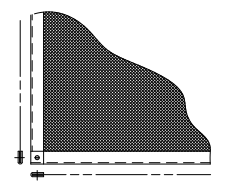
LOUVER SIZES: 12' x 16' MINIMUM PANEL SIZE.
48' x 96' MAXIMUM PANEL SIZE.

LOUVER PERFORMANCE STATEMENT

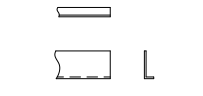
LOUVER MODEL EA-681 SHALL BE FABRICATED TO PROVIDE A MINIMUM OF (52%), 8.98 SQUARE FEET OF FREE AREA FOR A 48' x 48' SIZE LOUVER AND BEAR THE AMCA CERTIFIED RATINGS PROGRAM SEAL FOR AIR PERFORMANCE AND WATER PENETRATION. THE RATINGS SHALL SHOW A BEGINNING POINT OF WATER PENETRATION AT 01 DUNCES PER SQUARE FOOT OF FREE AREA AT A FREE AREA VELOCITY OF 981 FEET PER MINUTE, (8162) CUBIC FEET PER MINUTE, WITH A .12 INCHES WATER GAUGE PRESSURE DROP FOR AIR INTAKE.

ARROW LOUVER MODEL: EA-681
SCALE: 1/4"=1'

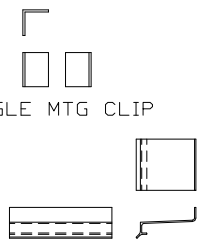
LOUVER ACCESSORIES



SCREEN



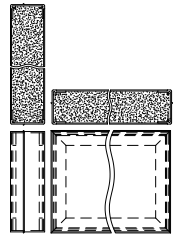
ADD-ON FLANGE



ANGLE MTG CLIP



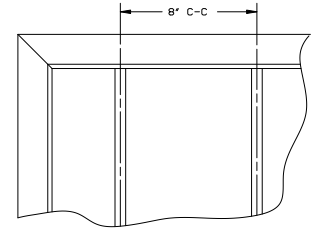
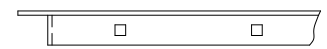
SILL EXTENSION



INSULATED BLANK-OFF



T-BAR



SECURITY BARS

<p>ARROW UNITED INDUSTRIES A Division of Mestek, Inc. 314 Riverside Drive - P.O. Box 69 - Wyalusing, PA 18853</p>			
CONTR.		MODEL EA-400 LOUVER	
ARCH.		PROJECT	
P.O.		BIMS	
DWN	MCT	DATE 3/17/09	ARRW JOB NO.
CKD	EDR	14552	E-2000
		DWG. NO.	
		39249	
		SHT OF	